

# TIN MOUNTAIN CONSERVATION CENTER

10/01/12 - 09/30/13



Donna Marie Dolan

## ANNUAL REPORT

# Annual Report

10/01/12-09/30/2013

## Staff

**Dr. Michael Cline**

*Executive Director*

**Lori Jean Kinsey**

*Education Director*

**Susan Beane**

*Development Coordinator*

**Donna Famiglietti Dolan**

*PR/Communications Manager*

**Nancy Simonton**

*Business Manager*

**Nora Dufilho**

*Outreach Coordinator*

**Carol Foord**

*Teacher/Naturalist*

**Sean Ashe**

*Property Manager/Naturalist*

**Sarah Frankel**

*Teacher/Naturalist*

**Richard Fortin**

*Trout Restoration Manager*

## Board of Trustees

**Karl Pfeil, Chair**

**Linda Hastings, Vice-Chair**

**Margaret Marshall, Treasurer**

**Judy Fowler, Secretary**

**Pat Heiges, Trustee at Large**

**Jeanette Almy**

**Tony Andreano**

**Bil Brochu**

**Theresa Gallagher**

**Harrison Hoyt**

**Peter Klose**

**Joe LaRue**

**Cheryl Littlefield**

**Sean Littlefield**

**Joe Manning**

**Tracy Marnich**

**Sean McGrath**

**Carolyn Myers**

**Dr. Leland Pollock**

**Theresa Swanick**

*Honorary Trustee*

**Seth Rockwell**

## Summer Interns

**Cathleen Balantic**

**Jessica Chickering**

**Daniel Garrett**

**Cory Knoblauch**

**Stephen Koffink**

# LETTER FROM THE CHAIR

Dear members and friends of Tin Mountain,

As my term as chair of the Board of Trustees ends in May, I would like to thank the membership, the staff, and trustees for the opportunity to have served you.

Since retirement, I have transitioned from a career in finance sitting behind a desk to working in the outdoors learning about forest conservation, natural sciences, and becoming aware of the many environmental and ecological issues that we face today. As one of the first Tin Mountain certified naturalist, I look forward to sharing my experiences and knowledge with my friends and family.

My sincere appreciation is extended to Tin Mountain naturalists and many of the guest speakers and members that helped rekindle my love for birding. I have embraced the early morning birding trips to the Brownfield Bog, and I eagerly anticipate the return of the migrants each spring.

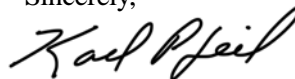
On behalf of the Board of Trustees, we would like to thank the staff at Tin Mountain for their dedicated service and leadership toward carrying out our mission: To promote an appreciation of the natural environment among children, adults, and families through hands-on programs in the schools, at camps, and in the community and to demonstrate responsible stewardship of natural resources through land protection, research, sustainable forestry, agriculture, and energy.

A special thanks to Lori Kinsey, our Educational Director who is working on her 30th year at Tin Mountain.

It is more important than ever that our children understand their natural environment and be prepared to tackle emerging issues such as climate change, sustainable use of our natural resources, and pollution. They will become the protectors of our natural resources for generations to come.

Your continued support as members is paramount to maintaining the quality of programs that we offer. I would like to thank you all for your participation, your time, and financial support. We have a great group of volunteers here at Tin Mountain, and I would like to thank them for all the hard work they do. They are an integral part in everything that we do.

Sincerely,



Karl Pfeil

Chair, Tin Mountain Board of Trustees



# DIRECTOR'S REPORT

*Dr. Michael Cline*



For 33 years, Tin Mountain's natural science school programs have been part of a student's public education in the greater Mt Washington Valley, and it has had positive influence on all of us and the special place in which we live. The deeper understanding of the natural environment by students (past and present) translates to strong environmental stewardship and has influenced many career choices.

Saddled with many other responsibilities, most teachers lack the time, teaching props/reference materials, and experience teaching students in outdoor settings that Tin Mountain programs bring to each class. In grades K-8, teachers are called upon to teach a large variety of subjects, and the majority of teachers do not have the breadth of knowledge in natural science nor the outdoor classroom leadership skills that Tin Mountain's teaching staff has accumulated in a combined 110+ years of working in the natural environment.

Nationwide, science, technology, engineering, and math (STEM) are areas that require strengthening at all levels of education. Tin Mountain school programs integrate all four of these disciplines in a curriculum that challenges students to apply concepts learned in hands-on situations. A teaching staff with advanced degrees in natural sciences and environmental education provides accurate/factual information and teaches students how to think rather than what to think about nature.

In addition, Tin Mountain has extensive knowledge of the local natural landscape and the infrastructure required to teach effectively and safely in the outdoors. Schools cannot be expected to own and maintain 70 pairs of snowshoes, a dozen canoes plus trailer, foul weather gear of all sizes, backpacks, hiking and water boots, nearly 50 wild animals mounts, nearly 1,500 acres forest dedicated to education, a state-of-the-art solar energy building/display, and much more. Tin Mountain staff has been leading environmental education trips of all types for all ages for over three decades, and with little effort, they can generate lists of exciting and challenging field trips tailored to the needs of any school group.

## SCHOOL PROGRAMS

A Town Warrant article to keep Tin Mountain school programs in the three Conway elementary schools failed to garner sufficient support last spring, and programs were once again stripped from the school budget. Fortunately, two family foundations with strong ties to the Valley stepped forward to fund the programs for one year. This was a stop-gap measure providing time for Tin Mountain to make its case to the citizens of Conway for future funding. The biggest priority set by Tin Mountain's Board of Trustees is to secure a long-term commitment from citizens and school boards to support Tin Mountain programs.

Tin Mountain has been presenting programs in most of these schools for 25-30 years, and student and teachers find them to be a critical part of their classes. Since schools contribute only half the actual cost, these programs are an excellent value for communities. On the upside, Tin Mountain received a three-year grant from an anonymous foundation to continue programs in the Berlin and Gorham schools.

Tin Mountain school programs reached five local school districts and are an integral part of 16 schools serving nearly 5,000 students in the greater Mt. Washington Valley, the Berlin/Gorham area, and western Maine. Multiple classroom visits and field trips throughout the year greatly magnify the actual contact hours between naturalists and students. Tin Mountain's multi-session, comprehensive approach sets its programming apart from other school-based environmental education efforts. Teacher/naturalists devote classroom lessons and field trips to exploring the many rivers, ponds, forests, mountains, and special natural areas in the region. School programs at every grade level emphasize "hands-on" learning during all seasons of the year. Students have sustained contact with Tin Mountain naturalists throughout their entire school careers. All environmental learning programs are tailored to the individual curricula of participating schools.

Tin Mountain was an integral part of the Maine Environmental Science Academy (MESA) at Molly Ockett Middle School this past year focusing teaching on forest ecology. One day each week, students learned the dynamics of forest succession, the common and scientific names for the native trees and how to identify them, forest soils, and much more. The hands-on nature of the classes was ideally suited for these students.

This was the third year that Tin Mountain taught a field-based Forest Ecology and Management course during May Term at the Fryeburg Academy. Modeled after college May terms, this innovative approach allows high school students to examine two or three specialized topics during a month-long intensive study term. This is a unique approach that infuses excitement for learning into the end of a long school year.



## NATURE LEARNING CENTER PROGRAMS

The Community Nature Program Series presented over 70 programs attracting enthusiastic participants of all ages. L.L. Bean and the Evenor Armington Fund once again provided critical support in sponsoring the popular series that reached over 1,200 people this past year and offered numerous opportunities for hands-on learning about the natural world of northern New England. Participants enjoyed canoeing Lake Umbagog, and the Magalloway River, hiking to Little Cherry Pond to see black-backed woodpeckers and to Evans Notch to see the giant hemlock, visiting enriched cove forests, hawk-watching on Mt. Agamenticus Mountain, as well as many other trips and presentations. A special Family Nature Program Series is designed specifically for families with children.

Tin Mountain Adult Nature Courses present an in-depth examination of various natural and cultural history topics including dry stone wall building, birding by ear, enriched forest ecosystems, snow: the winter blanket, and the art of bushwacking. The Eco-Forum Lunchtime Lecture Series provides provocative monthly presentations by noted experts on a wide variety of issues from Northern Pass transition line to salmon restoration projects that guarantee to stir debate.

Nature Authors Series that offers discussions with prominent nature writers from New England and beyond this year included Dan Gardoqui (*What the Robin Knows*), David Govatski (*Forests for the People: The Story of America's Eastern National Forests*), Clay Groves (*Catch em' all*), and Michael Jones (*Eastern Alpine Guide*). The Featured Nature Artists program is a revolving monthly exhibit of local nature artists in the lobby of the Nature Learning Center. The venue has attracted the best talent in the area, and evening art show openings are highly anticipated events.

The Tin Mountain Naturalist Certification Program (NCP) has attracted over 30 naturalists who are working towards certification. Certification provides recognition for achieving proficiency in several key natural science categories through coursework and independent study. Two participants completed the program course work and their independent projects this past year. It is ideal for residents of the Mt. Washington Valley given the area's emphasis on recreational activities and opportunities to disseminate its natural history to visitors. To complete the program, naturalists attend over 50 hours of programming culminating with an independent project that exhibits an understanding of natural history and the ability to share that knowledge with others.

Over 3,500 hours were logged by volunteers at programs as diverse as the Fryeburg Fair, the First Season Auction, Mt. Washington Century ride, and Mt. Washington Auto Road Bicycle Hillclimb. Many additional volunteer hours were generously donated to library support, trail construction/maintenance, recycling, stonewall construction, murals, and much more. Tin Mountain could not manage without members like these.



## Nature Camps

Tin Mountain camp programs reach nearly 350 local children and families each year. Nature summer camps attracts children ages 4 to 16 to camps in Fryeburg, ME, Jackson, Albany, and South Tamworth, NH where they learn firsthand about the local natural environment through hands-on outdoor exploration. Younger children attend day camp while a variety of weeklong adventures to wild areas in northern New England are offered to the older age groups. The weeklong Winter Camp provided an opportunity for children to spend their school break outside learning and having fun in the snow.

True to its commitment to providing high-quality environmental education at an affordable price, Tin Mountain provides financial aid to many local families that would otherwise have great difficulty sending their children to summer nature camps. Nearly one-quarter of all campers received scholarships in 2012/13 amounting to \$6,538.

## Other Community Programs

Tin Mountain continues to present summer programs throughout the Mt. Washington Valley. It was the 12th year that Tin Mountain has presented summer programs at the Wildcat Mountain Ski Area. These programs continue to draw strong attendance and interest from guests to the greater Mt. Washington Valley.

Tin Mountain's 15th Annual Meeting Festival was held at the Nature Learning Center in Albany and feature fantastic field trips, an excellent presentation by David Govatski on The 50th Anniversary of the Pondicherry Wildlife Refuge, great food, and much more. The organization's *Distinguished Service Award* was presented to Dave and Jeanne Mason, *Volunteer of the Year* to Gay Folland, and *Outstanding Environmental Educator* to Kristen Groves of the Jackson Grammar School. The *Business Partner Award* recognized David Condoulis and the *Trustees' Exemplary Service Award* was presented to Linda Hastings and Pat Heiges.



## Special Events

The 41th Mt. Washington Auto Road Bicycle Hillclimb, the toughest in the world provided nearly one-third of the financial support for the organization this past year. Most years, the changeable weather on the summit varies from clear skies to wind, rain, and sleet over the course of the race, but for the fourth year in a row, the weather was sunny, warm, dry, and calm. Riders who expected the typical natural challenges on the "Rockpile" were relieved more than disappointed.

The 12th annual Mt. Washington Century Ride was especially successful in 2013 and raised significant support for Tin Mountain programs. The year ride starts and ends at the Tin Mountain Nature Learning Center in Albany. A 100-mile course around Mt. Washington, over three notches and through some of the most beautiful land on earth, the Century attracted over 350 registrants last summer.

The 27nd Annual First Season Festival Benefit Dinner/Auction was held at the Fryeburg Academy Fieldhouse, and it involved over 400 local businesses and individuals who generously donated articles to be auctioned. In addition, Business Sponsors provided critical support for the event. The majority of Business Sponsors have been supporting Tin Mountain programs for many years. Over 400 people attend the festival enjoying fantastic food and fine quality auction items.

Fryeburg Academy always finds ways to give back to the community, and this year they provided tremendous support to Tin Mountain Conservation Center. Through hosting Tin Mountain fundraisers such as the Fly-fishing Film Festival, Fryeburg Academy has been outstanding. The Fryeburg Fair display of Bird Nests featured an elaborate field & forest design with numerous nests and dozens of native wildlife species.

## Nature Learning Center & Rockwell Sanctuary

During the mild 2012-13 winter, the Nature Learning Center used about 2.0 cords of wood as backup to the solar thermal collectors in supplying heat for the entire 8,500 ft<sup>2</sup> building. The photovoltaic (PV) system supplied all of the electrical demands of the center and then some. The PV array at the Center generates 14,000 kWh and uses 13,500 kWh. Interest in the technology continues to draw much interest and many tours. The Tin Mountain Renewable Energy Initiative (TMREI) continues to provide hands-on assistance to individuals installing solar thermal systems. Modeled on neighbor-helping-neighbor, the old fashioned barn-raising philosophy is employed to install solar applications for individuals in the community.

Facility rentals were very successful during the past year. Tin Mountain Conservation Center offers the ideal setting for a green wedding with its energy-efficient Nature Center and beautiful Rockwell Sanctuary. From the Nature Center's net-zero carbon footprint to planting wedding flowers and recycling wedding leftovers, Tin Mountain can be a great sustainable partner in planning any eco-wedding.

Volunteers were busy with numerous projects on the Rockwell Sanctuary. Their hard work maintained the entire trail network on the sanctuary, cut and split many cords of firewood, tended the gardens, sawed lumber, completed the survey of over 30 nest boxes, helped complete another stonewall, conducted timber stand improvement, and accomplished countless tasks around the Center. On the Jackson property on Tin Mountain, a generous grant allowed numerous volunteers to clear fields, repair trails, build rock steps, and construct bridges over streams and wet areas.

Initial work began on the intern cabin. The cabin uses wood cut from Tin Mountain property to construct a modest post-and-beam structure to house the 3-5 college interns each year and any guests that may need over-night accommodations. The building project will offer numerous workshops for those interested in learning green construction techniques.



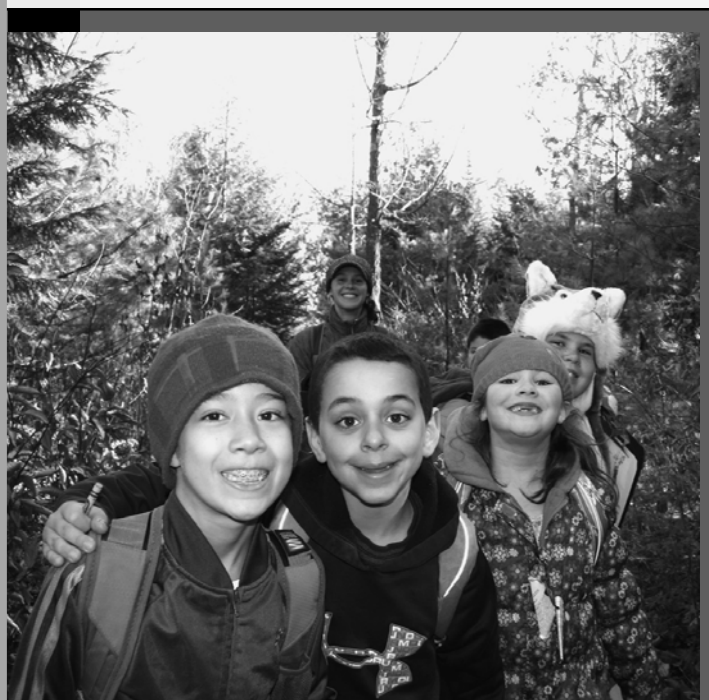
## Membership

The best barometer of successful Tin Mountain programming is membership and the Annual Fund Drive. Over the past year, Tin Mountain membership has continued to grow, and the Trustees and staff have redoubled their efforts to attract new members to the organization by providing tangible reasons for members to sustain their membership. The Rockwell Society is a sustaining membership alternative that automatically pays a pre-determined membership level in secure monthly installments from a member's bank account. In addition, the new membership webpage provides easy ways to become members and to donate to the different programs at Tin Mountain.

Yearly gifts, whether membership or annual fund donations, continue to provide essential support for environmental programs in schools, at summer camps and within the community. Long-term strategies can help sustain Tin Mountain programs into the future through Estate Planning, Charitable Remainder Trusts, or Charitable Lead Trusts. Call Executive Director Michael Cline for more details.

## Tin Mountain Timberlands

The fourth timber harvest of about 25 acres on Tin Mountain Conservation Center 1,200-acre timberlands in East Conway occurred in winter 2012-2013. This harvest was conducted with a cut-to-length processor and a forwarder and also some cutting with a convention crew. The harvest provided funds for programming and an opportunity to lead by example. Tin Mountain manages these lands in a responsible manner adhering to sustainable forest practices. The goals for owning the lands are twofold: 1) to demonstrate sustainable forestry methods that provide both high-quality wood products and essential forest habitats and 2) to provide an additional revenue stream to help fund environmental education programs.



## Suzy Engler Camp Scholarship Fund

The Tin Mountain Conservation Center provided children with scholarships to attend summer camp programs this past year through their Suzy Engler Scholarship Fund. The Fund honors the late Suzy Engler. Suzy was the Administrative Assistant at Tin Mountain for many years and was especially interested in providing children with "hands-on" nature camp experiences.

## Planned Giving Opportunities

**Bequests:** Bequests must satisfy personal and family obligations first; however, donors may also include Tin Mountain in their estate planning. Making Tin Mountain a beneficiary helps ensure that Tin Mountain's work will continue in future years while reducing estate taxes.

**Charitable Remainder Trusts:** Remainder trusts allow donors to transfer assets like stock to a trust and still retain its income for life. Ultimately, the assets become TMCC's, allowing the donor to keep an asset's income, avoid capital gains tax on its sale, take an income tax deduction, and make a commitment to TMCC's future.

**Charitable Lead Trust:** Lead trusts allow donors to keep assets while giving Tin Mountain their income for a specified period of time. Donors receive an immediate gift tax deduction for the full present value of the asset. This is a good way to pass assets on to heirs at full value while supporting Tin Mountain.

*For more information on the Suzy Fund endowment, or planned giving options, contact Executive Director, Michael Cline at (603) 447-6991 or write to him at 1245 Bald Hill Road, Albany, NH 03818. Tin Mountain also happily accepts and liquidates gifts of stocks and bonds.*

## Endowment Fund

Tin Mountain Conservation Center maintains an endowment as a designated fund with the New Hampshire Charitable Foundation (NHCF) in Concord. The NHCF invests and manages the principal making quarterly distributions to Tin Mountain from the earned interest based upon pre-determined calculations that ensure a certain level of growth in the designated fund. In fiscal year 10/01/12-9/30/13, interest distributions to Tin Mountain's general operations amounted to \$479,448. The NHCF's Combined Investment Fund is recognized as one of the most secure places for a nonprofit to build an endowment.

# FINANCIAL STATEMENT

October 1, 2012 - September 30, 2013

(With comparative totals for Oct. 1, 2011 through Sept. 30, 2012)

Statement of Financial Position as of	09/30/13	09/30/12
<b>Assets:</b>		
Capital Reserve	\$ 52,293	\$ 42,993
Cash & Equivalents	\$ 88,482	\$ 86,663
Accounts Receivable	\$ 24,819	\$ 1,145
Capital Campaign Pledges	\$ 98,882	\$ 6,383
Inventories, Undeposited Funds, Other	\$ 2,800	\$ 5,101
Property & Equipment (net of depreciation)	\$ 2,334,166	\$ 2,371,227
Investment Fund (NH Charitable Fndn.)	\$ 479,448	\$ 449,421
<b>Total Assets:</b>	<b>\$ 3,080,890</b>	<b>\$ 2,962,933</b>
<b>Liabilities:</b>		
Accounts Payable & Accrued Expenses	\$ 10,580	\$ 14,896
Mortgage	\$ 237,300	\$ 245,511
<b>Total Liabilities:</b>	<b>\$ 247,880</b>	<b>\$ 260,407</b>
<b>Net Assets:</b>		
Unrestricted General Fund, Equip. & Prop.	\$ 2,301,644	\$ 2,212,926
Temporarily Restricted	\$ 51,918	\$ 40,179
Permanently Restricted	\$ 479,448	\$ 449,421
<b>Total Net Assets:</b>	<b>\$ 2,833,010</b>	<b>\$ 2,702,526</b>
<b>Total Liabilities &amp; Net Assets:</b>	<b>\$ 3,080,890</b>	<b>\$ 2,962,933</b>

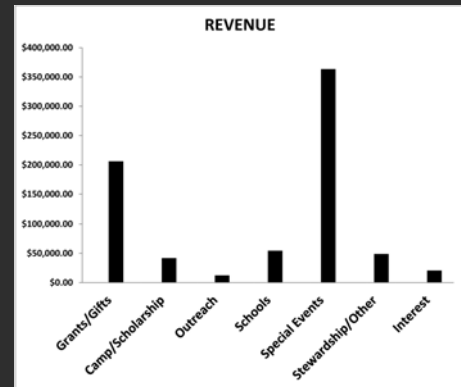
Statement of Activities	10/1/12-9/30/13	10/1/11-9/30/12
<b>Revenue and Support:</b>		
Grants, Gifts, Donations, Membership	\$ 205,901	\$ 176,220
Camp Revenue & Scholarship	\$ 41,706	\$ 51,721
Community Outreach Programs	\$ 12,285	\$ 12,394
School Program Support	\$ 54,360	\$ 29,425
Special Events & Misc. Fund Raisers	\$ 363,430	\$ 342,721
Stewardship, Rental, Store & Other	\$ 48,704	\$ 80,161
Interest (including NH Charitable Fndn.)	\$ 20,614	\$ 21,703
<b>Total Revenue and Support:</b>	<b>\$ 747,000</b>	<b>\$ 714,345</b>

<b>Expenses:</b>		
Administration	\$ 80,102	\$ 70,385
Fundraising & Special Events	\$ 191,896	\$ 177,792
Community Outreach Programs	\$ 110,784	\$ 122,991
School Programs	\$ 108,802	\$ 74,127
Summer Camp Programs	\$ 76,953	\$ 75,214
Stewardship, Grant Projects, Other	\$ 156,970	\$ 188,908
Temp. Restrictd funds released for Projects	\$ (22,407)	\$ (36,514)
Depreciation	\$ 59,205	\$ 58,368
<b>Total Expenses:</b>	<b>\$ 762,305</b>	<b>\$ 731,271</b>

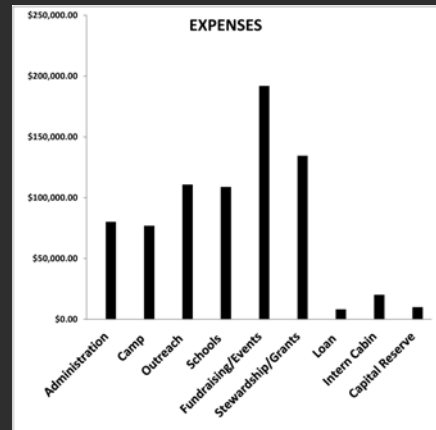
**Excess/Deficit of Revenue Over Expenses:** \$ (15,305) \$ (16,926)

<b>Other Activities:</b>		
Cabin Project Expenses	\$ 20,145	\$ 9,300
Capital Reserve Transfer	\$ 10,000	\$ 10,000
Loan Principal Payments	\$ 8,210	\$ 11,177
New Bus (fy 12-13), New Well (fy 11-12)	\$ 2,000	\$ 7,497
<b>Total Other Activities:</b>	<b>\$ 40,355</b>	<b>\$ 37,974</b>

## REVENUE



## EXPENSES



**Full Financial Report  
Available on Request**



BECOME A MEMBER ONLINE  
TINMOUNTAIN.ORG

# TIN MOUNTAIN CONSERVATION CENTER CONTRIBUTORS

## LIFE TIME MEMBERS

Thomas O. Currier  
Stuart Feldman  
Bob Santoro  
Tara Taylor  
Enya Taylor-Currier

## MEMBERS & ANNUAL DONORS

Adair Family  
Mark and Ingrid Albee  
Douglas and Paula Albert  
Allan Aldrich Jr. and Linda Comeau  
Albert P. Alex  
Huntley and Joyce Allan  
Jeanette and William Almy  
Anthony and Ellen Andreano  
Roy E. and Maxine Andrews  
Anna Stickney Chapter DAR  
David and Rosemary Armington  
Doug and Candy Armstrong  
Cynthia Astrachan  
Richard and Mary Badger  
Joe Bagshaw and Melinda Coyle  
Judith Bailey & Stephen D. Oppenheim  
D William Baird  
Lori and Frank Balantic  
Edwyna Balch  
Shirley Baldwin  
Patricia A. Barker  
Stephanie Barnes & Barbara Fortune  
Susan Beane and Peter Smith  
Andrew Bechtold  
Lawrence and Holly Beck  
Gerrie Beck  
Theresa Beckett and Matt Krug  
Bryan, Leslie and John Beckwith  
Edward Beecher and Christine Clyne  
Diana Bell  
Martha and Frank Benesh  
Ann and Richard Bennett  
Don Benski  
Emily and Peter Benson  
Ginger and Zachary Berger  
Kathleen and H. Edmund Bergeron  
Kathy Bergeron  
Peter Bergh  
Gene and Sue Bergoffen  
Dana and Cory Bertholdt  
Katrine Biddle and Frank Mann  
Waltraud Bihn  
Suzanne Birdsall  
George Bishop  
Edgar and Karyl Bisson  
Abby Blackburn  
Scott Bobbitt  
Rachel and Stan Bodkins  
Bonsignore Family  
Bradford P Borden  
Julie Bosak and Lawton Harper  
Paul and Claire Bouffard  
Robert B. Bowman and Lori Tradewell  
Lynn A. Bradbury  
Elizabeth M. Bradt  
Luke and Pat Brassard  
Richard and Karen Brisbois  
Eileen and William Brochu  
Charles and Terri Brooks  
E. Allen and Joanne Brooks  
David and Dorothy Brownell  
John Bruni and Dale D Warren  
Joyce A. Bryant & Patricia McFarlane  
Mr. and Mrs. Thaire B. Bryant  
Dr. Richard and Mary Burack  
Joe and Judy Burgess  
Andrew and Alison Burke  
Bridget Burke  
Douglas and Kathryn Burnell  
Dana Burrill  
Charles and Marilyn Butler  
Lois and Steve Caffrey  
Vicki and John Cannell  
Nancy S. Capone  
Shelley, Jonathan and Willow Carter  
William F. and Kathleen Casey  
Lawrence and Nancy Cassidy  
Anne Chace

Martha W. and John P. Chandler  
Helen T. Chapell  
William L. Chapman  
Richard and Lucille Charbonneau  
Anne C. Chase  
Nicki Chewning  
Christopher P. Williams Architects  
Clark Family  
George and Aila Clausen  
Clean Energy Solutions  
Dixie and Buzz Coleman  
David Condoulis & Kim Bowker  
Jean and Paul Conley  
John and Bette Conway  
Colleen Cormack and James F. Simmons Jr.  
Gerard L. & Joyce A. Cote  
Steven and Lisa Cote  
Don and Gloria Cote  
Martha Coughlin  
Peter Crane and Holly Huhn  
Ronald Cranshaw and Rosemary Gerbutavich  
Caitlin Crowley  
Dr. George and Priscilla Cunningham  
Kate and Bruce Curtis-McLane  
Kimberley and Christopher Darby  
Robert Day and Kim Leidenroth  
Thomas and Dorcas Deans  
Yves Delancy  
Laura Denis and Austin Orth  
Linda A. Denis  
Dr. Robert F. Denoncourt  
Dana Deschenes  
Nick DeSouza  
Peg, Michael, Tianna & Thomas Dewar  
Matthew DiMaio III  
Laurence and Catherine Donoghue  
Ann Doucette  
David and Barbara Douglass  
Noreen and Dave Downs  
John and Elaine Doyle  
Linda and Henry Dresch  
James and Jean Drummond  
Roland and Bette DuBois  
Frances Duffy  
John A. Jr. and Patricia Dunn  
Jackie Dziedzic  
Thomas C. and Ruth Earle  
Sarah C. Eastman  
Dawn Egers  
H. David Evans  
Patrick & Erika Fagan & Family  
Pierre Faubert  
Stu Feldman  
Charles and Margaret Felton  
Lt. Col. Richard and Anne Ficke  
Kim T. Field  
Finkelstein Foundation  
Patricia A. Stell Fleck  
Gay M. Folland  
Carol and William Foord  
Don and Diane Foote  
Valerie Ford  
Henry N. Forrest  
Maxwell E. Foster Jr. and Colleen Curran  
Betsy and Brian Fowler  
Judith Fowler  
Mr. and Mrs. Alec Frankel  
Frase Electric  
Freedom Public Library  
Patricia Freysinger  
Albert G. and Jeanette D. Friend  
Bill Friend  
Anne and Stephen Frost  
Phil & Sue Fuller  
Keith Gagner  
Paul and Terry Gagnon  
Theresa Ann and James F. Gallagher  
Joseph Gallucci  
Gamwell, Caputo & Co. PLLC  
Anne Garland and Joanne Clarey  
Laurance D. Garland  
Gregory K. Garrick  
Mr. Timothy Garrison  
Steven and Debra Gendall  
Richard P. Gerber  
Jennifer Gillis  
Carlotta & John Girouard  
Don and Susan Goodwin

Pat and Dale Goodwin  
Robert Gordon  
Joseph & Phyllis Gorman  
Sheldon and Jeanne Gottlieb  
David Govatski  
Nancy and Al Goyette  
Nancy and Dan Grant  
Steve Gray  
Mr. and Mrs. John Greely  
John J. and Joanne Green  
Jennifer Greene and Mark Maguire  
Roger and Linda Grucel  
Frank Gutmann  
Larry Hall  
Charles and Maureen Hanlon  
Tish Hanlon & Stephen Weeder family  
Dexter Harding and Lucy Gatchell  
Sam and Elizabeth Harding  
Constance Harmon  
Russell T. and Lynne Hart  
Kevin Hart  
James and Linda Hastings  
Mr. and Mrs. Peter Hastings  
Deborah Hatch  
Elizabeth Hatch and Family  
Michael Hathaway  
Dr. Stuart T. and Barbara B. Hauser  
Doug and Linda Haver  
Jonathan Hebert  
Pat and Bob Heiges  
Lon Henderson  
Barbara Henley and Sam Greto  
Paul and Elaine Hennigan  
Kimberly Henry  
Susan and Jack Henry, Jr.  
Joan & Todd Heysler  
John and Pat Higgins  
Chad and Colleen Hill  
Marlan Hinnant and Rania Naouiri  
Jane and Gary Hoffman  
John Hoffman  
Jennifer and Matthew Hohenboken  
Betty Holmes  
George and Nancy Holmes  
Berthold and Valerie Horn  
Mr. and Mrs. Charles Houghton  
Harrison and Barbara Hoyt  
Emmy Hudson-Swogger  
Priscilla and Frank Hundley  
Mr. Scott Hutchins  
David Ing  
Irene and Joe Jacintho  
Jacques and Janice Couture  
Scott Jansen  
Laura Jawitz and Gordon Cormack  
Eleanor Jenkins  
Scott D Johnson and Amy Montgomery  
Mark and Natalya Johnson  
Sally Johnson  
Amy Jones  
Bruce and Jane Joubert  
The Joyce Family  
Nina and Jonas Kahn  
Sven Karlsson  
Teri & Stefan Karnopp & Family  
Jennifer and Dean Karnopp  
Robert Katz  
Kearns Family Foundation - Andrew & Kayleigh Kearns  
Cheryl and John Keator  
Tim Keith and Bill Petry  
Joan S. Kelley  
Daryl Kenison  
Judy and Dan Kennedy  
Kenneth and Sarah Kimball  
William, Tracie, Chloe, Abigail & Olivia Kittredge  
Richard Klausner  
Peter and Elaine Klose  
Rick and Paula Knight  
Jerry Knirk and Cam Spence  
Joseph and Fannie Knowles  
Robin Kosstrin and Robert Yanuck  
Richard A. Kouns  
Jen Kovach and Kevin Flynn  
Ted and Carol Kramer  
Sally and Ron Kratt  
John and Leslie Kremer  
Thomas Kugel  
Mark Lambert





# TMCC CONTRIBUTORS

Ms. Francine Lampidis  
Walter Lancaster  
Victoria and Mike Laracy  
Mark Larson  
Joe and Michelle LaRue  
Jeffrey Lathrop  
Ronald Lawler & Margaret Merritt  
Thelma and Roland Le Blanc  
George LeBlanc  
William Lee  
Robert A. Leipold  
Richard and Eileen Lennon  
Victor and Janna Levesque  
Michael and Marilyn Levine  
Jim and Claire Lewkowicz  
Susan Licardi  
Donna M. Lietz  
David Little and Tracey Collins  
Cheryl and Paul Littlefield  
Heather Littlefield  
Sean and Mary Littlefield  
Lewis and Rosemary LLOYD  
M. E. Lloyd  
Christopher Logan  
Eugene Long Jr., M.D.  
Mr. & Mrs. Longmaid  
Allan and Phyllis Lothrop  
Jane and Alan Lounsbury  
Catherine M. Lovequist  
Chester and Lydia Lucy  
Laura and AO Lucy  
Roy Lundquist  
Michael Lutjen and Marcia Scogin  
Mike Lynch and Karen Travers  
Gary and Karen MacDonald  
Dianne MacIntyre  
Mrs. Joan MacPhail  
Marni Madnick M.D. and Robert Schor  
Linda and Scott Mahler  
Maine Dry Stone - Chris Tanguay  
The Manero Family  
The Manning Family  
Gordon Mann  
Judith Manna-Burgess  
Tracy Marnich  
Richard E. & Nancy P. Marriott Fnd, Inc.  
Sut and Margaret Marshall  
Chris Martino  
David and Jeanne Mason  
Pam and Phil Mason  
John and Barbara Matsinger  
Richard H. Mayer  
Joe and Daryl Mazzaglia  
McCluskey Family  
Kim McCue  
McGrath Family  
Lorraine McKay  
Kenneth and Linda McKenzie  
Lawrence and Karen McMenamy  
Rebecca McReynolds and Maureen Enos  
Wendy and John McVey  
Judith A. Meagher  
John and Catherine Mersfelder  
Kathleen and Robert Metz  
Arthur and Beverly Micallef  
Meghan Miller  
Catherine and Christopher Milton  
Gael R. and Ty Minton  
Judy and James Mirabella  
Charles and Pamela Monaghan  
Virginia and Francis Monnes  
Ann and Murdock Montague  
Cynthia and Keith Morgan  
Mrs. Miriam Andrews Morrell  
Nancy Lee Morrell  
Olga & Steve Morrill  
Renee Morrisette  
Nancy Morrison  
Morse Family  
Mountain Garden Club  
William K. Munck  
Robert and Jean Murphy  
Will Murphy and Claire Corcoran  
John Newton  
Kathleen Noonan  
Northeastern Lumber Mfr. Assoc  
Brenda and Raymond O'Brien

Mr. & Mrs. Thomas O'Connor  
Nancy and Stephen O'Doherty  
David and Kerry Oedel  
Donald and Marilyn Olivier  
Daniel F. O'Neill, M.D., Ed.D.  
Christina Orio  
Theodore K. Osgood  
Daniel and Jeanne Ouellette  
Lisa Paglierani  
Gail F. Paine  
Priscilla Parent  
Karen and David Parker  
Debra Patrick  
Carole Patterson  
Cecelia Peacock  
John and Alice Pepper  
Joe and Judy Perez  
John A. Peterson  
Anne Peterson  
Karl and Susan Pfeil  
Carol Pierce  
Samantha Pilzer and Family  
Piotrow Family  
Jeannie and Edward Poliquin  
Leland and Sylvia Pollock  
Alix and Bob Pratt  
Jean and Bill Preis  
Francesca Priestman  
Mr. and Mrs. A.H. Query  
Richard W. Quint  
Jay and Robbin Rancourt  
Kenneth and Jane Rancourt  
Mr. and Mrs. Henry Raymond III  
Eileen and Joe Redmond  
Faith and Thomas Reney  
Richard H. Reuper  
John Riley  
Dr. David and Mrs. Emilie Riss  
Duncan Robb  
Dean and Judith Robertson  
Frank J. Robey  
Jean and John Roccio  
Seth Rockwell  
Lynn Rockwell & Roman Kokodyniak  
Marilyn M. Rodes  
Fred Rosenberg  
Jason Roth  
Ronald Routhier and Patricia Murphy  
Anthony Ruddy and Lisa Baumgartner  
Brett and Cindy Russell  
Arlene Russell  
Elbridge & Linda Russell  
Ryan Family  
Carol and Jim Rymes  
Saco Valley Mineral & Gem Club  
Cynthia L. Sauerwein  
Glenn and Sonnhilde Saunders  
Sarah N. Schenker  
Leslie and Warren Schomaker  
Diane M. Schuette  
Robert and Suzanne Scolamiero  
Joseph M. Scott  
David and Judith Seddon  
Amy Sewell  
Wendell Shaffer  
Paula Shappell  
Mary Ellen Shea  
Teresa G. Sheridan  
Barbara Sidley  
Donald and Joyce Silke  
Robert A. Silvestre  
Rick Simmons & Carol Mancinelli  
Mr. and Mrs. William T. Simonds  
Nancy and Ward Simonton  
Frederick and Barbara Slader  
Lyn Slanetz  
Martha Smillie and Kurt Yuengling  
Elizabeth and Drew Smith  
Peter B. Smith  
David and Diane Smith  
Steven and Carol Smith  
Liza Snyder and Family  
Elizabeth T. Snyder  
Dr. Faye D. and W. Donald Soderberg  
Douglas C. and Kathleen F. Somerville  
David Sordi  
Darlene and Warren Spence

Lucinda B. Spencer  
James and Wendy St. Pierre and Family  
Mrs. and Mr. Robert St. Pierre  
Bruce and Barbara Stelle  
Susan Steller  
Linda Stetson  
Morey Stettner and Margie Wachtel  
John Stevens  
Kathryn & Richard Stewart  
Eleanor and Emery Stokes  
Robert and Suzanne B. Stone  
Stonehurst Manor  
William and Sally Stoops  
Story Land  
Marc and Sue Stowbridge  
Barbara Strell  
Mr. and Mrs. Marvin Swartz  
Jean Sweeney  
Kathleen Sweeney  
Stephen and Sally Swenson  
Imre and Deborah Szauter  
E. Richmond and Sue Talbot  
Tamarack Construction Company, Inc.  
Mike Tamulis  
Denise and Brian Taylor  
Bruce and Debra Taylor  
Dr. and Mrs. Charles Taylor  
Tara Taylor and T.O. Currier Jr.  
Enya Taylor-Currier  
Jean Tewksbury  
Mr. and Mrs. Bradley R. Thayer  
Mary Judge Thayer  
The Wales Family  
Brenda and Don Thibodeau  
Katharine Thompson  
Jean Macomber Thompson  
Sandra S and William F Thoms III  
Harold and Evelyn Thorne  
Mrs. and Mr. Lorraine Tilney  
Ruth G. Timchak  
Townley Family  
Jotham Trafton  
Gail Troseth and John Wheeler  
Linda Turcotte  
Cristina Ullmann  
Rick Van de Poll  
Reed Van Rossum & Kathleen Mulkern  
Johanna and Dennis Vienneau  
Arthur and Carol Viens  
Jennifer Viger  
Donna Wallace  
Andrea Walsh and Andy Davis  
Joan and John Walsh  
Miles E. Waltz, M.D. and June Waltz  
Judith H. Ward  
Richard A. Ware  
Robin and Leonard Waters  
Richard H. Webb  
Merle and Herman Weber  
Harvey Weener, D.D.S.  
Howie and Sue Wemyss  
Susanna H. West  
George and Laurie Weston  
White Mountain Oil & Propane, Inc.  
Jeffrey H. White & Joyce Peseroff  
Lisa and Will White  
Jennifer Hocking Wiley  
Freddie and Janet Wilkinson  
Christopher and Ann Williams  
Stephen F. and Maureen B. Wilson  
William Wogisch  
Tina Woldow Rutan  
Elizabeth Hatton Wood  
Denise and Steve Woodcock  
Mrs. and Mr. John F. Woodhouse  
Woodward Family  
Mr. and Mrs. Thomas Workman  
Douglas Works  
Christine Wray and John Felicitas  
Ardis and Joe Yahna  
Moira Yip  
Arlene and Charles Zaccaria  
Peter and Margaret Zack Jr.  
Ellen and Andrew Zelman  
Mary Zwiercan



Donna Dolan

# Mt. WASHINGTON CENTURY RIDE

*Benefit of Tin Mountain*

## SPONSORS:

Residence Inn by Marriott N Conway  
 Pearl Izumi  
 VDO cyclecomputing  
 ClifBAR  
 Eastern Mountain Sports  
 PRIMAL  
 Quisisana Corp. II  
 White Mountain Hotel & Resort  
 Hannaford Supermarket  
 Lakes Region Coca-Cola  
 Memorial Hospital  
 Fandangle's Catering  
 Oakhurst Dairy  
 Old Village Bakery  
 Harrison Creative  
 Conway Daily Sun  
 The Mountain EAR  
 93.5 WMWV  
 Magic 104fm  
 WPKQ 103.7  
 Moat Mountain Photography  
 DESTINATION CYCLING  
 Red Jersey Cyclery  
 Terry Precision  
 The Valley Originals  
 White Mountain Amateur Radio Club  
 White Mtn. Oil & Propane  
 Ciclismo Classico  
 Athletes Advantage Massage Therapy  
 Alvin J. Coleman & Son Inc.  
 Shaws Supermarket  
 Mt. Washington Auto Road  
 NIKE Factory Outlet-N Conway  
 Julbo USA  
 CycleMania  
 Northway Bank  
 Port-A-Pack.com

## Century Pledge Donors

Douglas Arnold  
 Diane Bartolone  
 Dawna Beane  
 Deborah Bouchard  
 Denis Boucher  
 Seth Dunten  
 Josie Gage  
 Heather Hamlin  
 Wilston Johnston  
 Dianne Lewis  
 Jerry McCauley  
 Dawn Michelle  
 Chris Miles  
 Maxime Morin  
 Cliff Reeves  
 Scarlett Tudor  
 Timothy Van Dyck  
 Leah Gettons



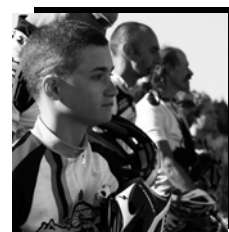
# Mt. WASHINGTON AUTO ROAD

## BICYCLE HILLCLIMB

*Benefit of Tin Mountain*

## SPONSORS:

POLARTEC  
 Ciclismo Classico  
 Cadence Wealth Management  
 DESTINATION CYCLING  
 Residence Inn by Marriott N Conway  
 PRIMAL  
 Shain's of Maine Ice Cream  
 BikeREG.com-Pioneer Registration Services  
 VDO cyclecomputing  
 Eastern Mountain Sports  
 Pearl Izumi North Conway Factory  
 The Valley Originals  
 Mt. Washington Auto Road  
 Oakhurst Dairy  
 Lakes Region Coca Cola Bottling Co.  
 Harrison Creative  
 Downeast Bike Specialists  
 Hammer Nutrition  
 Marti Shea Coaching  
 Peppers USA  
 Port-A-Pack.com  
 Red Jersey Cyclery, N Conway  
 Terry Precision  
 White Mountain Amateur Radio Club  
 Frontside Grind



## HillClimb Pledge Donors

Stuart Abramson  
 Lawrence Beck  
 Robert Blais  
 Rolf Budd  
 Alex Carlone  
 Aaron Carpenter  
 Erik Carratu  
 Andrew Chambers  
 Jason De Lorme  
 Robert Dumas  
 Lee Eckhart  
 Gary Gluck  
 Jeff Gower  
 Rod Gramsley  
 James Hayes  
 Evan Huff  
 Steve Jacques  
 Wilston Johnson  
 Matt Lasker  
 Rich Matthes  
 Fiona Moore  
 Jack Palis  
 Linda Pierce  
 Vern Schrum  
 Brian Taylor  
 Alice Shea  
 Jonah Thompson  
 Brian Wade  
 Julia Wayner  
 John Weaver  
 Daniel Whittle  
 John Williams



# CABIN CAMPAIGN

Anonymous (2)  
 Anonymous Private Foundation  
 Tony & Ellen Andreano  
 Susan Beane & Peter Smith  
 Emily & Peter Benson  
 Eileen & Bill Brochu  
 Nancy Burns  
 Michael Cline  
 Laura Cronin  
 Scott & Anne Cunningham  
 Del & Marilyn Desmarais  
 Nora & Mike Dufilho  
 C. Anthony & Suzanne Federer  
 Stuart Feldman  
 Gay Folland  
 Carol & Will Foord  
 Judith Fowler  
 Theresa & James Gallagher  
 David & Lesbia Haine  
 The Kendal C. & Anna Ham Charitable Fndn  
 James & Linda Hastings  
 Joanne, Frank & Victoria Hastings  
 Pat & Bob Heiges  
 Jen & Matt Hohenboken  
 Susan & Rupert Ines  
 Lori Jean Kinsey  
 Peter & Elaine Klose  
 Cheryl & Paul Littlefield  
 Sean & Mary Littlefield  
 George & Ann Macomber  
 Tracy Marnich  
 Margaret & Sut Marshall  
 David & Jeanne Mason  
 Rebecca McReynolds & Maureen Enos  
 Anne Peterson  
 Karl & Susan Pfeil  
 Lee & Sylvia Pollock  
 Brett & Cindy Russell  
 Dix Shevalier & Laurie Gilmour  
 Nancy & Ward Simonton  
 Kathy & Dick Stewart  
 Marvin & Judy Swartz  
 Tara Taylor & T.O. Currier  
 Brenda & Don Thibodeau  
 Johanna & Dennis Vienneau  
 Barry Ward  
 Carol & Edward Westervelt  
 George & Laurie Weston

# GRANTS AND RESTRICTED GIFTS

## ANNUAL FUND

Thomas W. Haas Foundation

## CAMP BROCHURE

LL Bean Inc.

## CANOPY CLASSROOM

Christopher Logan

## CONWAY SCHOOLS PROGRAM

Stanton & Elizabeth Davis Fund (NHCF)

Marshall Family Fund (NHCF)

## FAMILY PROGRAMS

Frances R Dewing Foundation

## GENERAL SUPPORT

Dixie & Buzz Coleman

Joseph's Spaghetti Shed

Levi Strauss Foundation

Lewis & Esther Perlstein Family Foundation

The Marriott Foundation

Margaret & Sut Marshall

Seth Rockwell

Ron Routhier & Patricia Murphy

Story Land

Tamworth Lyceum

The Evenor Armington Fund

Wardner Gilroy Trust

## COLLEGE SCHOLARSHIP

Mt. Washington Lodge of Free Masons

Imre & Deborah Szauder

## COMMUNITY/OUTREACH PROGRAMS

LL Bean Inc.

The Evenor Armington Fund

## TROUT RESTORATION PROJECT

Jeff Carr

Bill & Yvonne Klotz

Melissa Meyers

Natural Resource Conservation Service (NRCS)

Saco Valley Anglers Trout Unlimited #299

## INTERN PROJECT

Anonymous Private Foundation

The Robert and Dorothy Goldberg Charitable Foundation

## NORTH COUNTRY SCHOOLS/PROJECT K.I.T.E.

Anonymous Private Foundation

Cogswell Benevolent Trust

## HONOR OF DAVID AND ROSEMARY ARMINGTON

David and Dorothy Brownell

## JACKSON PROPERTY SUPPORT

Anonymous

## MEMORIAL GIFTS

### *Ed Astrachan*

Stuart Feldman

### *Isaac & Geraldine Feldman*

Stuart Feldman

### *David Henry*

Pierre McCrea

### *Phil Kelly*

Robert C. Bernhardt

E. Allen & Joanne Brooks

China Chef

Helene & Nicholas Evans

David & Jeanne Mason

Miriam Andrews Morrell

David & Sally Olson

Charlotte P Smith

Mr & Mrs Edward Sullivan

Irene & John Sullivan

Phil Trapasso

Linda & Francisco Villalobos

### *Bernie Beane Miles*

Susan Beane & Peter Smith

### *Channing V. Snyder*

Judith W Butler

Ken Cogswell

Anne & Frederick Englert

The Montessori School of Holmes Run

### *Charles E Osgood Sr & Dr. Patricia F. Osgood*

A. Neill Osgood

"We must be willing to let  
go of the life we planned so  
as to have the life that is  
waiting for us"

Joseph Campbell

# FIRST SEASON AUCTION AND BENEFIT DINNER 2013

## 2013 SPONSORS:



**Lupine, Inc**  
**Fryeburg Academy**  
**Northway Bank**  
**Chalmers Insurance Group**  
**Green Thumb Farms**  
**North Country Dental**  
**Hill's Florist & Nursery**

**M&M Assurance Group, Inc**  
**Pinetree Power**  
**Quisisana on Lake Kezar**  
**Eastern Mountain Sports**  
**Affordable Events**  
**Magic 104.5**  
**93.5 WMWV**

**WPKQ 103.7**  
**The Conway Daily Sun**  
**The Mountain Ear**  
**Salmon Press**  
**Outside Television-TV 16**  
**Lindt Chocolate**  
**The Write Stuff**

**Norway Linens**  
**Black Cap Grille**  
**J-Town Deli**  
**Sandwich Creamery**  
**Grant's Supermarket**  
**Johnny's Selected Seeds**  
**Pepsi Varsity Beverage**

## AUCTION DONORS:

1-2-1 Fit  
 1785 Inn  
 A Better Body  
 A. J.'s Glass and More  
 Ace of Spades  
 Affordable Events  
 Albany Pet Care  
 Alice Ogden Black Ash Baskets  
 Alvin J. Coleman & Sons  
 AMANA  
 Ameri-Gas  
 Andrea Kennett  
 Andy Davis Storyteller  
 Ann Bennett  
 Ann Willett  
 Anne Filson  
 Appalachian Mountain Club  
 Attitash Mtn Resort & Wildcat  
 Attitash Ski Area  
 B.N.I.  
 Backcountry Bakery & Café  
 Barbara Kyle Balfour  
 Barbara Sperling  
 Bavarian Chocolate Haus  
 Bear Notch Ski Touring Center  
 Beggar's Pouch  
 Bert Weiss Studio  
 Big Dave's Bagels & Deli  
 Bill Brochu  
 Black Cap Grille  
 Bob Grant Photography  
 Boston Red Sox  
 Brenda and Don Thibodeau  
 Brian Fowler  
 Brook Pottery  
 Cabin Fever Restaurant  
 Café Noche  
 Canoe King of New England  
 Carol Foord  
 Carole Patterson  
 Carolyn's Valley Tailor Shop  
 Cassidy Gallery at Jackson Village  
 Castle in the Clouds  
 Center for Natural Health  
 Chalmers Insurance Group  
 Cheryl and Paul Littlefield  
 Cheryl's Clipper Cuts  
 China Chef  
 Cole Scott Photography  
 Coleman Rental & Supply Inc.  
 Comfort Inn & Suites/  
 Pirate's Cove Adventure Golf  
 Community Market and Deli  
 Conserve Car Wash  
 Conway Café  
 Conway Scenic Railroad  
 Conway Veterinary Hospital  
 Cool Jewels  
 Cooper, Cargill, Chant, PA  
 Cormack Construction Mngt  
 Country Cabinets, Etc.  
 Covered Bridge Shoppe  
 Cranmore Mountain Resort  
 Crest Auto World  
 Dairy Queen Grill & Chill  
 Darby Field Inn and Restaurant  
 Dawson's Creations  
 Dean and Gayle Baker  
 Debra Samia  
 Designs...by Deb S

Dick Brisbois  
 Don and Edith Dashnau  
 Doug and Kathy Burnell  
 Dr. Scott Ferguson  
 DragonFly Aerials LLC  
 Dragonfly Massage  
 Dunkin Donuts  
 Dutch Bloemen Winkel  
 Earth and Fire Studio Gallery/  
 League of NH Craftsmen  
 Eastern Green Incorporated  
 Eastern Mountain Sports  
 EMS/Outdoor School  
 Eastern Slope Inn  
 Eaton Village Store  
 Ed Bergeron  
 Edge of Maine Gallery  
 Elaine Wilkey  
 Ellie and Michael Kahn  
 Ellie Eastman  
 Elvio's Pizzeria  
 Emily and Peter Benson  
 Eyes On Owls  
 Flatbreads Company  
 Flower Drum Florist  
 Framed Art Superstore Outlet  
 Frechette Tire  
 Freedom Computer  
 Friend of Tin Mountain  
 Fryeburg Academy  
 Fryeburg Chiropractic Wellness Ctr  
 Fryeburg Fair Assoc  
 Fryeburg Veterinary Hospital  
 Funspot  
 Gail Zimmerman  
 Garden Dreams  
 Gayle Baker Valley Travel  
 George Ryan, DDS  
 Glass Wear  
 Glen Junction Restaurant  
 Gold Leaf Frame & Gallery  
 Good Tail Lobster  
 Goshen Corner Sugar House  
 Grant's Supermarket Glen  
 Gray Ghost Productions  
 Great Brook Studio/Anne Garland  
 Great Glen Trails  
 Green Thumb Farms  
 Hair Designs  
 Ham Arena  
 Hannaford's North Conway  
 Harrison Hoyt  
 Hart's Turkey Farm Restaurant  
 Hastings Law Office  
 Hausfrau Foto  
 Heart & Hand Inc.  
 Hill's Florist and Nursery  
 Holly Sares  
 Horsefeathers  
 Ikebana Flower  
 Inn at Crystal Lake  
 J&J Floorcovering  
 Jack and Joan Rossi  
 Jackson Art Exploration  
 Jackson Historical Society  
 Jackson Ski Touring Fnd  
 Janna Levesque  
 Jay Rancourt  
 Jerry's Bloody Mary  
 Jewelry by Tim and Friends

Jill Reynolds  
 Joe Burgess  
 Johanna Vienneau  
 John Filson  
 John Weston  
 Johnny's Selected Seeds  
 Jon Whitney  
 J-Town Deli & Country Store  
 Karen Brisbois  
 Karen Eisenberg Designs  
 Karl Pfeil  
 Karla's Pet Rendezvous  
 King Pine Ski Area  
 Kiwanis Club of MWV  
 Kokopelli  
 Kringles Country Store  
 Lake Kezar Country Club  
 Landscape & Garden Supply of ME  
 Larraine Cormack  
 Law Offices of William Battles PC  
 Leavitt's Country Bakery  
 Lee Pollack  
 Leo Kenney  
 Leslie David Company  
 Leura Hill Eastman-Fryeburg  
 Limmer Boot Inc  
 Linda Gray  
 Linda Sorensen Jewelry  
 Linda Stetson Honor of Earl  
 Stetson  
 Lindsey's Paint & Wallpaper  
 Lindt Chocolate  
 Lisa Gardner  
 Local Grocer  
 Lori Jean Kinsey  
 Lupine, Inc.  
 M&M Assurance Group, Inc.  
 Macomber Glass  
 Magic 104/Valley Originals  
 Margaret Kenney  
 Marnie Cobbs  
 Marty Basch  
 May Kelly's Cottage  
 McKaella's Sweet Shop  
 McSherry Nursery  
 Mike Eng  
 Mike Sachse  
 Miles & Jane Waltz  
 Milford Flooring  
 Minuteman Press  
 Moat Mountain Photography  
 Mount Washington Observatory  
 Mount Washington Ski Touring Ctr  
 Mountain Designs & Construction  
 Mountain Sports Massage Therapy  
 Mountain Streams Music  
 Mountain Top Music Center  
 Muddy Moose  
 Nancy Grant  
 NAPA Redstone  
 Neil and Laura Cronin  
 Nestlenook Farm Recreation  
 New England Embroidery  
 NH Fisher Cats  
 Nordic Village Resort  
 North Conway Country Club  
 North Country Angler  
 North Country Dental  
 North Country Whittler  
 North Country Wholesale

Northeast Auto Body  
 Northeast Gems  
 Northeast Snowmobile Rentals  
 Northway Bank  
 Norway Laundry and Linens  
 Off the Beaten Path  
 Old Village Bakery  
 One Good Turn  
 Outdoor Images  
 Oxford House Inn  
 Papa's Florist and Gift Shop  
 Paris Farmers Union  
 Pepsi Varsity Beverage  
 Peter Blue  
 Peterson Woodworking  
 Physician Engineered Products  
 Pinetree Power/Tamworth  
 Pleasant Street Massage  
 Portland Glass  
 Portland Sea Dogs  
 Portland Symphony Orchestra  
 Purity Spring Resort  
 R & R Woodworkers  
 Ragged Mountain Equipment  
 Reliable Oil Proulx Oil and Propane  
 Remick Country Doctor Museum  
 RePlace Goods  
 Residence Inn by Marriott  
 Richard M. Plush Antiques  
 Rockingham Electric  
 Rosand - New Business Direction  
 Russ and Joan Lanoie  
 Rutabaga  
 Saco River Canoe & Kayak  
 Saco River Pottery  
 Saco Valley Gem & Mineral Club  
 Sally Bags  
 Sandwich Creamery  
 Sawyer River Knife and Trading Co  
 School House Farm  
 Schwoolies Etc.  
 Settlers' Green Outlet Village  
 Shalimar of India  
 Shaw's Supermarket  
 Shepard River Draft Horse Co  
 Silver Lake Home Center  
 Silver Paw Pet Tags/Metalscapes  
 Ski Works  
 Snowvillage Inn  
 SoyFire Candle  
 Squam Lakes Natural Science Ctr  
 Starbuck's  
 State Farm Insurance  
 Steph's Stylin' Studio  
 Stone Mountain Arts Center  
 Stonehurst Manor  
 Storyland  
 Strata Restorative Massage  
 Sunshine Daydream Farm&Gardens  
 /Michelle DeLucia  
 Suzanne Federer  
 Sweet Maple Café  
 Synott Mountain Guides  
 Tamworth Lyceum  
 Tara Taylor and T.O. Currier  
 The Antarctic Connection  
 The Children's Museum Dover NH  
 The Clipper Merchant Teahouse  
 The Conway Daily Sun  
 The Merry Tweede



## AUCTION DONORS CONT

The Met Coffee House  
The Mountain Ear  
The MWV Children's Museum  
The Old Village Barber Shop  
The Other Store  
The Oxford House Inn  
The Quilt Shop at Vac N Sew  
The Reflective Arts Center  
The UPS Store  
The Wooden Soldier  
The Write Stuff  
Tilly Ink/Rick Tillotson  
Tin Mountain Conservation Ctr  
TMC Books  
Toy Chest  
Trails End Ice Cream Shop  
Tramway Artisans  
Transformational Body Therapy  
Tree Lady Photography  
Trumbull's Hardware  
Tuckerman Brewing Company  
Tuckerman's Restaurant & Tavern  
V.E. Smith & Son  
Vintage Baking Company  
Vintage Frameworks  
Wayside Farm  
Wendy Ketchum  
West Branch Traders of ME.  
Weston's Farm Stand  
White Birch Books  
White Mountain Aquatic Fnd  
White Mountain Hotel & Resort  
White Mountain Hypnosis Center  
White Mountain Oil & Propane  
White Mountain Photo-Gallery  
Whitehorse Press  
Wild Light Images  
Wildcat Tavern  
WMWV 93.5 Radio  
WOKQ 97.5/WPKQ 103.7  
Write Stuff  
Z P Sports  
Zeb's General Store  
Zumba Fitness w/ Dotti Aiello

## AUCTION CASH DONORS

Steve Grey  
M.E. Lloyd  
Margaret & Sut Marshall  
Stonehurst Manor

## SPECIAL THANKS:

Fryeburg Academy  
David Sturdevant  
Chef Alan Whitaker  
Interact Club  
New Standard Combo  
The Oxford House Inn  
Duddie and Roy Andrews  
Jean Andrews  
Brian Hill  
Fryeburg Fair  
Tony Andreano  
George Cleveland  
Sarah Eastman  
KHS Middle School  
June McLeavey  
Bartlett Elementary School  
Theresa Gallagher  
Linda Gray  
Susan Goodwin  
Linda Hastings  
Barbara and Harrison Hoyt  
Pat Heiges  
Margaret Marshall  
Karl and Susan Pfeil  
Lee Pollock  
Cheryl Littlefield  
Bob Santoro  
Sophia DiBella  
Katelyn Dolan  
Tin Mountain Trustees  
Tin Mountain Staff  
Tin Mountain Volunteers



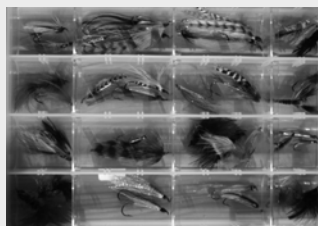
## Camp Brochure LL Bean Ragged Mountain Saco Bound



## Mountain Garden Club Kiwanis Club of North Conway Eastern Mountain Sports The Gem and Mineral Club

## Camp Scholarships

Roy & Duddie Andrews  
David & Rosemary Armington  
Emily & Peter Benson  
Bushee Thorn Mountain Trust  
Carroll County Altrusa Foundation  
Dixie & Buzz Coleman  
Marilyn D'Aquanni  
Eaton Conservation Commission  
Eastern Mountain Sports  
Gay Folland  
Steve Glasgow & Kristin DiBella  
Sheena Harte  
Pat & Bob Heiges  
Jen & Matt Hohenboken  
Laura Jawitz & Gordon Cormack  
Valerie & David Jensen  
Mark & Natalya Johnson  
Kiwanis Club of Mt. Washington Valley  
Margaret & Sut Marshall  
David & Jeanne Mason  
Bob & Jean Murphy  
Nancy Chandler-Brett Beyerle Memorial Fund  
George Neville  
Barbara Ann Porter  
Project Succeed  
Bob Santoro  
Dix Shevalier & Laurie Gilmour  
David Sordi  
Dick & Kathy Stewart  
Sandy Thoms



## F3T FLY FISHING FILM TOUR SPONSORS

<b>S.S. Flies, Inc.</b>	<b>Yellow Dog</b>
<b>North Country Angler</b>	<b>Scientific Angler</b>
<b>Fly Fishing Film Tour Group</b>	<b>Orvis Outlet, N Conway</b>
<b>Patagonia-Boston</b>	<b>Montana Fly Company</b>
<b>Eastern Mountain Sports</b>	<b>Eldredge Bros. Fly Shop</b>
<b>Bass Pro Outdoor World, LLC</b>	<b>Steven M. Lewers &amp; Assoc.</b>



## SPECIAL THANKS TO BUSINESSES AND INDIVIDUALS DONATING SERVICES, TIME AND PRODUCTS:

Anonymous  
Bagels Plus  
Big Dave's Bagels  
Chandel Associates P.A.  
Charity Chatter  
Chef's Market  
Cormack Construction  
Bill Coughlin  
Deborah & Peter Fauver  
Flatbread Co of North Conway  
Frontside Grind Coffee & Espresso  
Fryeburg Fair Association  
Hancock Lumber  
Grant's Shop n' Save  
Hannaford Supermarket  
Linsey's Paint and Wallpaper  
LL Bean  
Minuteman Press  
Old Village Bakery  
Paris Farmers Union  
Richard Hudson Estate  
Shaw's Supermarket  
Sherman Farms  
Smith & Town Printers  
Marc & Sue Stowbridge  
Mount Washington Radio  
Outside Television-White Mountains TV-16  
The Conway Daily Sun  
The Met Coffee House  
The Mountain Ear  
Valley Vision  
Weston Farms  
White Birch Books  
WMWV 93.5 FM  
WPKQ 103.7

### Local Volunteer Groups Including:

White Mountain Amateur Radio Club  
Mountain Garden Club  
Saco Valley Gem and Mineral Club  
Kennett Key Club  
Fryeburg Interact Club  
Junior National Honor Society JBES  
Mountain Garden Club  
Pequawket Kids



### PHOTOGRAPHERS:

Ed Bergeron	Sarah Frankel
Kathy Bergeron	Jamie Gemmetti
Bill Brochu	Leo Kenney
Naomi Buckman	Heather Leach
Judy Burgess	Chris Lewey
Joe Burgess	J.S. McElvery
Carolyn Brown	Karl & Susan Pfeil
Bill Brochu	Craig Harrison
Mason Cline	Stefi Hastings
Chris DeNuzzio	Debbi Hatch
Sophia DiBella	Holly Huhn
Katelyn Dolan	Dick Pollock
Donna Dolan	Mark D. Shiller
Tom Eastman	Stephen A. Thomas
Debbie Eddison	Andrew Thompson



Jeanette Almy  
Bill Almy  
Dale Anderson  
Ellen Andreano  
Tony Andreano  
Duddie Andrews  
Roy Andrews  
Candy Armstrong  
Glenn Ashworth  
Cathleen Balantic  
Dee Babb  
Carlene Bane  
Stephanie Barnes  
Nona Bauer  
Mac Beattie  
Theresa Beckett  
Martha Benesh  
Steve Blum  
Kim Bowker  
Bill Brochu  
Eileen Brochu  
Peggy Brown  
Dick Brunelle  
Doug Burnell  
Heather Burnell  
Kathy Burnell  
Seth Burnell  
Brian Byrne  
Kathy Byrne  
Haley Carelton  
Tim Carter  
Peg Casey  
Larry Claveau  
Mason Cline  
Jeff Cohen  
Dixie Coleman  
David Condoulis  
Lorraine Cormack  
April Costa  
Christine Costello  
Peter Crane  
Bob Crowley  
Sue Crowley  
George Cunningham  
T.O. Currier  
Bruce Curtis-McLane  
Kate Curtis-McLane  
Marilyn D'Aquanni  
Dr. Robert F. Denoncourt  
Sophia DiBella  
Cliff Dickenson  
Dan Dineen  
Katelyn Dolan  
Donna Donnelly  
Katherine Doyle  
Bette Dubois  
Mike Dufilho  
Debra Eddison  
Randy Evans  
Deborah Fauver  
Peter Fauver  
Suzanne Federer  
Tony Federer  
Stuart Feldman  
David Finch  
Wayne Finch  
Jim Fines  
Paula Fines  
Ralph Fiore  
Sally Fiore  
Greg Fitch  
Christine Fleming  
Bert Flower  
Gay Folland  
Bryant Fong  
Diane Foote  
Don Foote  
Barbara Fortune  
Judy Fowler  
Alex Frankel  
Phil Fuller  
Sue Fuller  
Carol Gaeta  
Phil Gaeta  
Jim Gallagher

Theresa Gallagher  
Anne Garland  
Dan Garrett  
Lucy Gatchell  
Morgen Gillis  
David Gotjen  
Gaye Gould  
Robin Grant  
Linda Gray  
Eugenia Gregory  
Bob Griffin  
Clay Groves  
Barbara Guffin  
Susannah Halpern  
Tish Hanlon  
Betsey Harding  
Sam Harding  
Leah Hart  
Jim Hastings  
Joanne Hastings  
Linda Hastings  
Al Hatch  
Lois Hatch  
Bob Heiges  
Pat Heiges  
Steve Hempel  
Elaine Hennigan  
Paul Hennigan  
Kim Henry  
Ron Herman  
Charlene Hibbs  
Pat Higgins  
Lee Hillsgrove  
Dave Hobbs  
Jane Hoffman  
Bekka Hohenboken  
Jen Hohenboken  
Matt Hohenboken  
Barbara Hoyt  
Harrison Hoyt  
Michael Hoyt  
Mickey Hoyt  
Holly Huhn  
Gloria Hutchings  
Tom Hutchings  
Walter Jaronski  
Sharon Joyce  
Betsy Kent  
Kenneth Kimball  
Sarah Kimball  
Rick Klausner  
Elaine Klose  
Peter Klose  
Cory Knoblauch  
Munsey Knox  
Steve Koffink  
Matt Krug  
Wally Kurz  
Walter Lancaster  
Joan Lanoie  
Russ Lanoie  
Joe LaRue  
Michelle LaRue  
Maxine Lee  
Larry Leonard  
Mike Levine  
Diana Levy  
Chris Lewey  
Nels Liljedahl  
Cheryl Littlefield  
Mary Littlefield  
Paul Littlefield  
Sean Littlefield  
David Mande  
Joe Manning  
Maria Manning  
Margaret Marshall  
Sut Marshall  
Justin Martin  
Dave Mason  
Jeanne Mason  
Daryl Mazzaglia  
Sean McGrath  
Breezy McKenzie  
Dave Megin  
Lisa Menard  
Kathy Moore  
Diane Muliero

Carolyn Myers  
Shedera Nelson  
Kevin O'Brien  
Susie O'Brien  
Rich Palatino  
Dan Palmer  
Vince Pelote  
Anne Peterson  
Karl Pfeil  
Sue Pfeil  
Thomas Pitman  
Dick Pollock  
Lee Pollock  
Sylvia Pollock  
Cathy Poppenwimer  
Alice Proctor  
Luke Quigley  
Warren Richardson  
Jill Reynolds  
Robert Rose  
Jackson Ross-Parent  
Marco Ross-Parent  
Mark Ross-Parent  
Susan Ross-Parent  
Lynne Route  
John Routhier  
Denise Sachse  
Bob Santoro  
Dawson Santoro  
Carol Saunders  
Wendell Shaffer  
Paula Shapell  
Matt Sheaf  
Mary Sheldon  
Ward Simonton  
Art Smith  
Dave Smith  
Laurel Smith  
Peter Smith  
Dave Sordi  
Lisa Sordi  
Donovan Spaulding  
Larissa Spaulding  
Marcia Steger  
Julie Steiner  
Dick Sterry  
Bob Stevenson  
Dick Stewart  
Marc Stowbridge  
Sue Stowbridge  
Sandy Stowell  
Beth Sturdevant  
Dave Sturdevant  
Mary Anne Surrette  
Paul Surrette  
Theresa Swanick  
Judy Swartz  
Marvin Swart  
Ronald Taksar  
Mike Tamulis  
Chris Tanguay  
Tara Taylor  
Steve Temple  
Mary Thayer  
Amy Thompson  
Christine Thompson  
Frank Thompson  
Lisa Thurston  
Linda Turcotte  
Dennis Vienneau  
Johanna Vienneau  
Lucie Villeneuve  
Peter Villeneuve  
Judy Waltz  
Miles Waltz  
Herm Weber  
Merle Weber  
Stephen Weeder  
Marie Weiss  
David Weiss  
Lisa White  
Jennifer Wiley  
John Will  
Cathi Williams  
Sandy Wolner  
Jack Wolter  
Steve Woodcock  
Tom Workman

# TIN MOUNTAIN PROGRAM DESCRIPTIONS

## SUMMER CAMP PROGRAMS

Tin Mountain Conservation Center has offered summer camp programs to children ages 4-16 for the past 30 years. *Kindercamp* and *Day Camp* are presented at facilities in four different locations for kids ages 4 to 9 years old. *Nature Theme Camps* integrate nature with art, music, history and water for children 6-12 years. *Peaks and Paddles Intro* allows younger campers (ages 9-10 years) to gain confidence and acquire outdoor skills through day hikes a day of canoeing, and a one-night campout in the White Mountains. In *Canoe Voyageurs*, campers ages 11-12 learn canoe techniques with two days of canoeing followed by a three day trip to Lake Umbagog! Older children ages 13-16 years hike and camp the Presidential Range of the White Mountains in *Paths and Peaks*.



2013 College Interns

## OUTREACH PROGRAMS

**Young Mountaineers Club:** This weekly nature club directed by staff is designed for children in grade 1-4 students with a keen interest in nature and the outdoors. Each Saturday morning, *Tin Mountaineers* meet to explore different facets of the natural environment and make new friends with similar interests.

**Naturalist Certification Program:** Community members increase their understanding of the natural world while developing new skills to share as Certified Naturalists. Participants attend various Adult Nature Courses, Nature programs, special workshops, and completed an independent project to fulfill their certification by Tin Mountain.

**Tin Mountain Renewable Energy Initiative (TMREI):** This program was created in the fall of 2010 to address the need for solar energy in the Mount Washington Valley. Based on PAREI's model of neighbor-helping-neighbor community energy raisers in Plymouth, NH, our local organization relies on the power of volunteers to lower installation costs and strengthen community bonds.

**College Internship Program:** This is a valuable effort that enables Tin Mountain to expand its projects and program offerings while providing focused training and practical experience that is necessary for young professionals to enter the workplace with confidence. In addition, interns develop sustained relationships within the environmental and natural science community that provide the underpinnings of a lifelong network in their chosen field.

**Eco-Forum Lunch Series:** Diverse environmental issues are presented by outstanding speakers the second Thursday of the month sponsored by Flatbread Co of N Conway, Rock House Mountain Bakery, Frontside Grind, The MET Coffee House, Old Village Bakery. The program is free and open to the public. Views expressed in the Eco-Forum are those of the speaker and not necessarily those of Tin Mountain.

## SCHOOL PROGRAMS

**Environmental Year:** Developed for elementary schools, a Tin Mountain teacher/naturalist visits the classroom for 34 weeks (51 hours) with a comprehensive set of activities and trips that teach basic principles of ecology and natural sciences. Concepts learned in class are applied to the field through numerous outdoor activities and trips. It is recognized as the backbone of our school programs because it allows our teacher/naturalists to work closely with the same students each week for the entire school year, providing in-depth instruction and curriculum support.

**Project KITE (Kids in the Environment):** A multi-disciplinary program for grades K-8, Project KITE was developed to support existing curricula by providing a special focus on the natural resources that sustain the economic and social underpinnings of the region. Working closely with teachers, Tin Mountain provides three presentations by a teacher/naturalist and a field trip on each unit, including forests, wildlife, wetlands and mountains.

**Forests for the Future:** Over an 18-week period, a Tin Mountain teacher/naturalist visits junior high or high school classrooms for one entire day each week to teach basic principles of forest ecology and forest resource management. Using a different forest study site each year, students learn field techniques and collect data on weather, soils, wildlife habitat, watersheds, and conduct a timber cruise and forest inventory, complete with recommendations. Students analyze the data and develop a complete forest management plan that they present to school officials, landowners, and the public at a special school/town meeting. The program also includes an over-night field trip to study forest ecosystems, local wood products industries, and the rich forest history of the region.

**Extra Hours Program:** Teachers and Tin Mountain staff tailor programs to meet special needs of different schools. Examples include leading field trips, identifying special resources and materials, and conducting special projects such as recycling or river studies.

## COMMUNITY NATURE PROGRAM SERIES

TMCC offers a variety of hands-on environmental education programs for adults and families of the Mt. Washington Valley area and western Maine. The Community Nature Program Series supported by L.L. Bean and the Evenor Armington Fund is a major vehicle for drawing families into the natural world, with thanks to lodging sponsor Residence Inn by Marriott, N Conway. Over 70 programs are offered throughout the year.

## ADULT NATURE COURSES

Tin Mountain *Adult Nature Courses* provide an in-depth look at various natural and cultural history topics. Individuals with all levels of experience are encouraged to enroll. All programs combine time in the classroom and lab with hands-on field studies and may include lectures, slideshows, group discussions, guest speakers, and selected readings.



1245 Bald Hill Road, Albany, NH 03818  
Facility and Grounds Rentals  
for Non-Profit & Private Functions



Mon-Fri 9-5 Sat 10-3



Become a Member of  
Tin Mountain Conservation Center  
on line at [www.tinmountain.org](http://www.tinmountain.org),  
or call 603-447-6991



Tin Mountain Conservation Center  
1245 Bald Hill Road  
Albany, NH 03818

## TIN MOUNTAIN CONSERVATION CENTER



Photo: Karl Pfeil

[WWW.TINMOUNTAIN.ORG](http://WWW.TINMOUNTAIN.ORG) 603-447-6991 [info@tinmountain.org](mailto:info@tinmountain.org)