

# Tin Mountain Conservation Center

10/01/13 - 09/30/14

Karl Pfeil

ANNUAL REPORT

# Annual Report

10/01/13-09/30/2014

## Staff

**Dr. Michael Cline**

*Executive Director*

**Lori Jean Kinsey**

*Education Director*

**Susan Beane**

*Development Coordinator*

**Donna Famiglietti Dolan**

*PR/Communications Manager*

**Nancy Simonton**

*Business Manager*

**Nora Dufilho**

*Outreach Coordinator*

**Corrie Blodgett**

*Program Coordinator*

**Carol Foord**

*Teacher/Naturalist*

**Sarah Frankel**

*Teacher/Naturalist*

**Sean Ashe**

*Property Manager/Naturalist*

**Phaedra Demers**

*Teacher/Naturalist*

**Richard Fortin**

*Trout Restoration Manager*

## Board of Trustees

**Linda Hastings, Chair**

**Bill Brochu, Vice-Chair**

**Peter Klose, Treasurer**

**Judy Fowler, Secretary**

**Pat Heiges, Trustee at Large**

**Jeanette Almy**

**Tony Andreano**

**Megan Barry**

**Theresa Gallagher**

**Cheryl Keator**

**John Keator**

**Joe LaRue**

**Cheryl Littlefield**

**Sean Littlefield**

**Joe Manning**

**Tracy Marnich**

**Margaret Marshall**

**Carolyn Myers**

**Karl Pfeil**

*Honorary Trustee*

**Seth Rockwell**

## Summer Interns

**Cathleen Balantic**

**April Costa**

**Morgan Martin**

**Lily Morgan**

**Michael Nilan**

Cover Photo: Karl Pfeil

# LETTER FROM THE CHAIR

Dear Members and Friends of Tin Mountain,

As Chair of the Trustees of the Tin Mountain Conservation Center, I consider it an honor and a privilege to serve and support this great organization. I enjoy working with everyone. Tin Mountain is fortunate to have many enthusiastic supporters and so many hard working trustees, staff, and volunteers. In fact, it truly is a cooperative team effort of the entire Tin Mountain community that helps make the organization what it is today.

I hope you take advantage of expertise the staff has about the natural world. Tin Mountain offers many interesting programs, and by participating in just a few, you will be plenty busy and learn a lot about nature. There is a diverse group of offerings, so I hope there is something that sparks your interest.

If you would like to make a strong organization stronger, your efforts would be greatly appreciated. We are always searching for ways to increase our base of volunteers, and I hope that you will consider coming to the Nature Center and getting involved. There is a job for everyone. We can use help with maintenance and building at our nature center and intern cabin, or perhaps you would enjoy helping to maintain the trails. There is always office work in conjunction with our fundraisers and everyday activities. The monthly coffee hour, usually the first Monday of the month at 9 AM, is where you can meet other volunteers and find a project that you will enjoy. In addition to helping by volunteering, we hope you will support us by attending our programs and classes.

Like many of you, I am always excited to see the new seasonal schedule of programs. I make a concerted effort to arrange my schedule around the programs that I will enjoy most, and I hope that you will too. There is so much to learn about the natural environment, and Tin Mountain is a wonderful place to learn about and enjoy the great outdoors.

Our trails are always open, and there will be a new kiosk soon with maps of the trails. You can pick-up a map at the Nature Center or strike out on your own and explore. Every season there is something new and different out on the trails.

I look forward to seeing you at the Nature Center or on the trails.

Sincerely,



Linda Hastings  
Chair, Tin Mountain Board of Trustees





# DIRECTOR'S REPORT



## *Dr. Michael Cline*

This generation is in for a bumpy ride when it comes to environmental problems, and “The saddest aspect of life right now is that science gathers knowledge faster than society gathers wisdom.” The speed of scientific discovery has only increase since Isaac Asimov uttered those words. The challenge remains to wisely apply the vast amount of knowledge being accumulated to make sound environmental choices that will continue to sustain all of our ecological systems.

When it comes to the natural environment, past experience suggests that when applying that knowledge, management should err on the side of caution. Whether it is rainbow trout, kudzu, or osprey, humans have a legacy of causing more problems when they think they have the answer. Natural systems are complex and not easily manipulated effectively. The best management is often the least management. The natural undisturbed ecosystem is usually the best template for management, but that does not mean do not manage natural systems.

On the subject of climate change and atmospheric carbon dioxide levels, not acting actually allows unsustainable management to continue. Management is needed that brings carbon dioxide emission levels in line with the natural pre-industrial levels. Again, it is nature's template that should serve as the guide for management actions.

For 34 years, Tin Mountain has worked to help students and adults better understand the natural systems around them so they can make wise decisions about the manner in which their natural environment is managed. Nationwide, science, technology, engineering, and math (STEM) are areas that require strengthening at all levels of education to meet tomorrow's challenges. Tin Mountain school programs integrate all four of these disciplines in a curriculum that allows students to apply concepts learned in hands-on situations. A teaching staff with advanced degrees in natural sciences and environmental education provides accurate/factual information and teaches students how to think rather than what to think about nature.

The success that this generation has in managing the environmental problems that they have inherited from prior generations will depend largely on the knowledge and wisdom that we impart to them. At Tin Mountain, staff, Trustees, and members are committed to do our part to pass on lessons learned and the wisdom of using nature as a template.

## SCHOOL PROGRAMS

Tin Mountain school programs reached five local school districts and are an integral part of 16 schools serving about 5,000 students in the greater Mt. Washington Valley, the Berlin/Gorham area, and western Maine. Multiple classroom visits and field trips throughout the year greatly magnify the actual contact hours between naturalists and students. Tin Mountain's multi-session, comprehensive approach sets its programming apart from other school-based environmental education efforts. Teacher/naturalists devote classroom lessons and field trips to exploring the many rivers, ponds, forests, mountains, and special natural areas in the region. School programs at every grade level emphasize “hands-on” learning during all seasons of the year. Students have sustained contact with Tin Mountain naturalists throughout their entire school careers. All environmental learning programs are tailored to the individual curricula of participating schools.

A forward-thinking School Board kept Tin Mountain school programs in the three Conway elementary schools last spring reversing the actions from last year that stripped Tin Mountain school programs from the school budget. Support from two family foundations with strong ties to the Valley funded the programs last year and allowed time for Tin Mountain to make a successful case to the citizens of Conway for the 2014-15 school year.

Tin Mountain has been presenting programs in most of these schools for 25-30 years, and student and teachers find them to be a critical part of their classes. Since schools contribute only half the actual cost, these programs are an excellent value for communities. Additionally, Tin Mountain completed year one of a three-year grant from an anonymous foundation to continue programs in the Berlin and Gorham schools.

Tin Mountain continues to be an integral part of the Maine Environmental Science Academy (MESA) at Molly Ockett Middle School using a hands-on approach to teaching ecology. One day each week, students learned about water in the environment, the dynamics of forest succession, the common and scientific names for the native trees and how to identify them, forest soils, and much more. The hands-on nature of the classes was ideally suited to these students.

This was the fourth year that Tin Mountain taught a field-based Forest Ecology and Management course during May Term at the Fryeburg Academy. Modeled after college May terms, this innovative approach high school students to examine two or three specialized topics during a month-long intensive study term. This is a unique approach that infuses excitement for learning into the end of a long school year.

School field trips are opportunities to teach natural science and become familiar with the environment in students' own backyards, and teacher/naturalists adapt lessons to incorporate trips to local natural areas and discuss historic land uses. Because the Board of Trustees is committed to providing quality environmental education programs at an affordable price, Tin Mountain school programs are offered at half the actual cost to present; the Board and staff fundraises to cover the remaining costs.

Tin Mountain programs don't stop at the end of the school day. Many local communities have well-established after-school programs in which Tin Mountain participates. It's a perfect time of day to explore the natural world. Many of the schools have terrific school yards replete with forests, fields, and trails, with views of Mt. Washington and other inspiring peaks, and even an occasional pond to explore. After school programs were presented to students through Project Succeed at Pine Tree, Conway, and John Fuller Elementary, the Mustang Academy in Madison, and Pequawket Kids at the Denmark, Snow, and New Suncook Elementary Schools.

## NATURE LEARNING CENTER PROGRAMS

The Community Nature Program Series presented over 70 programs attracting enthusiastic participants of all ages. L.L. Bean and the Evenor Armington Fund once again provided critical support in sponsoring the popular series that reached over 1,200 people this past year and offered numerous opportunities for hands-on learning about the natural world of northern New England. Participants enjoyed canoeing Lake Umbagog, and Pon-took Reservoir, hiking to Little Cherry Pond in search of the black-backed woodpecker and to Humphrey's Ledge for spring wildflowers, visiting enriched cove forests at Moose Brook, hawk-watching on Peary Mountain, as well as many other trips and presentations. A special Family Nature Program Series is designed specifically for families with children.

Tin Mountain Adult Nature Courses present an in-depth examination of various natural and cultural history topics including dry stone wall building, dendrology, vernal pools, and animal tracking. The Eco-Forum Lunchtime Lecture Series provides provocative monthly presentations by noted experts on a wide variety of issues from Moose Decline in NH to Mountain Bike Trail Construction that guarantee to stir debate. The Featured Nature Artists program is a revolving monthly exhibit of local nature artists presented in the lobby of the Nature Learning Center. This year we have hosted exhibits of photography, painting, and felting to name a few. The venue has attracted the best talent in the area, and evening art show openings are highly anticipated events.



The Tin Mountain Naturalist Certification Program (NCP) has attracted over 30 naturalists who are working towards certification. Certification provides recognition for achieving proficiency in several key natural science categories through coursework and independent study. Three participants completed the program course work and their independent projects thus far. It is ideal for residents of the Mt. Washington Valley given the area's emphasis on recreational activities and opportunities to disseminate its natural history to visitors. To complete the program, naturalists attend over 50 hours of programming culminating with an independent project that exhibits an understanding of natural history and the ability to share that knowledge with others.

## Nature Camps

Tin Mountain camp programs reach nearly 250 local children and families each year. Nature summer camps attract children ages 4 to 16 to camp locations in Fryeburg, ME, Jackson, Albany, and South Tamworth, NH. Participants where they learn firsthand about the local natural environment through hands-on outdoor exploration, all under the guidance of trained naturalists and camp staff. Younger children attend day camp while a variety of weeklong adventures to wild areas in northern New England are offered to the older age groups. The weeklong Winter Camp provided an opportunity for children to spend their school break outside learning and having fun in the snow.

True to its commitment to providing high-quality environmental education at an affordable price, Tin Mountain provides financial aid to many local families that would otherwise have great difficulty sending their children to summer nature camps. Nearly one-quarter of all campers received scholarships in 2013/14 amounting to \$6,970.

## Other Community Programs

Tin Mountain continues to present summer programs throughout the Mt. Washington Valley. It was the 13th year that Tin Mountain has presented summer programs at the Wildcat Mountain Ski Area. These programs continue to draw strong attendance and interest from guests to the greater Mt. Washington Valley, and they provide natural history about the region that enriches the experience of visitors.

Tin Mountain's 17th Annual Meeting Festival was held in May at the Nature Learning Center in Albany and featured several fantastic field trips, an excellent presentation by Johanna Vienneau on Monarch Butterfly Populations in North America, great food, and much more. This event also is an opportunity for us to recognize individuals who have made significant contributions during the past year. This year the organization's Distinguished Service Award was presented to Mike Tamulis, *Volunteer of the Year* to Barbara Hoyt, and *Outstanding Environmental Educator* to Kelley Brown of the New Suncook Elementary School. The Business Partner Award recognized *Frontside Grind* for its support, and the *Trustees' Exemplary Service Award* was presented to Karl Pfeil.

## Volunteerism

Supplementing its talented staff, Tin Mountain benefits from a committed and enthusiastic complement of volunteers. Over 3,500 hours were logged by volunteers at programs that help to promote Tin Mountain's objectives and vision within the Valley and assist in the fundraising that is essential to continue environmental education programming. Some of these programs include: a Fryeburg Fair display, our First Season Auction, Mt. Washington Century Bicycle Ride, and Mt. Washington Auto Road Bicycle Hillclimb. Many additional volunteer hours were generously donated to library support, trail construction/maintenance, recycling, stone wall construction, murals, and much more. Tin Mountain could not manage without members like these.

## Special Events

The 42<sup>nd</sup> Mt. Washington Auto Road Bicycle Hillclimb is the toughest in the world, and it provided financial support for the organization's work. Special tanks are extended to the Mt. Washington Auto Road for its continued partnership. Most years, the changeable weather on the summit varies from clear skies to wind, rain, and sleet over the course of the race, but for the fifth year in a row, the weather was reasonable. Riders who expected the typical natural challenges on the "Rockpile" were relieved more than disappointed.

The 13<sup>th</sup> annual Mt. Washington Century Ride was especially successful in 2014 and raised significant support for Tin Mountain programs. The ride starts and ends at the Tin Mountain Nature Learning Center in Albany. The 100-mile course takes riders around Mt. Washington, climbs over three notches, and through some of the most beautiful land on earth. This year the Century attracted nearly 250 registrants from all around New England and beyond.

The 28<sup>th</sup> Annual First Season Festival Benefit Dinner/Auction was held at the Fryeburg Academy Fieldhouse. It involved over 400 local businesses and individuals who generously donated articles to be auctioned. In addition, Business Sponsors provided critical support for the event. The majority of the Business Sponsors have been supporting Tin Mountain programs for many years, and again we are grateful for their ongoing support. Over 400 people attend the festival enjoying fantastic food and fine quality auction items.

The Fryeburg Fair display of *Birds of the Forests and Fields* featured an elaborate field & forest design with numerous mounted birds, dozens of native wildlife species, and a scavenger hunt for the children. The Fair afforded yet another opportunity to spread the word about the Tin Mountain mission and to provide a learning experience for many fairgoers. The exhibit was staffed by Tin Mountain staff and volunteers.

## Nature Learning Center & Rockwell Sanctuary

During the harsh 2013-14 winter, the Nature Learning Center used about 3.5 cords of wood as backup to the solar thermal collectors in supplying heat for the entire 8,500 ft<sup>2</sup> building. The photovoltaic (PV) system supplied all of the electrical demands of the center and then some. The PV array at the Center generates 14,000 kWh and uses 13,500 kWh. Interest in the technology continues to draw much interest and many tours. The Tin Mountain Renewable Energy Initiative (TMREI) continues to provide hands-on assistance to individuals installing solar thermal systems. Modeled on neighbor-helping-neighbor, the old fashioned barn-raising philosophy is employed to install solar applications for individuals in the community.

Facility rentals were successful during the past year. Tin Mountain Conservation Center offers the ideal setting for a green wedding with its energy-efficient Nature Center and beautiful Rockwell Sanctuary. From the Nature Center's net-zero carbon footprint to planting wedding flowers and recycling wedding leftovers, Tin Mountain can be a great sustainable partner in planning any eco-wedding.

Volunteers were busy with numerous projects on the Rockwell Sanctuary. Their hard work maintained the entire trail network, cut and split many cords of firewood, tended the gardens, sawed lumber, completed the survey of over 30 nest boxes, helped complete another stonewall, and accomplished countless tasks around the Center. On the Jackson property on Tin Mountain, a generous grant allowed numerous volunteers to clear fields, repair trails, build rock steps, and construct bridges over streams and wet areas.

Work on the intern cabin continued through the year with plans to complete it by early 2015. The cabin uses wood cut from Tin Mountain property to construct a modest post-and-beam structure to house the 3-5 college interns each year and any guests that may need over-night accommodations. The building project offered numerous workshops for those interested in learning green construction techniques.



## Membership

The best barometer of successful Tin Mountain programming is membership and the Annual Fund Drive. Over the past year, Tin Mountain membership has continued to grow, and the Trustees and staff have redoubled their efforts to attract new members to the organization by providing tangible reasons for members to sustain their membership. The Rockwell Society is a sustaining membership alternative that automatically pays a pre-determined membership level in secure monthly installments from a member's credit card. In addition, the new membership webpage provides easy ways to become members and to donate to the different programs at Tin Mountain.

Yearly gifts, whether membership or annual fund donations, continue to provide essential support for environmental programs in schools, at summer camps and within the community. Long-term strategies can help sustain Tin Mountain programs into the future through Estate Planning, Charitable Remainder Trusts, or Charitable Lead Trusts. Call Executive Director Michael Cline for more details.

## Tin Mountain Timberlands

The fifth timber harvest of about 10 acres on Tin Mountain Conservation Center's 1,200-acre timberlands in East Conway occurred in winter 2013-2014. This harvest was conducted with a conventional crew and small skidder. The harvest provided funds for programming and an opportunity to lead by example by demonstrating responsible land stewardship. Tin Mountain manages these lands in a responsible manner adhering to sustainable forest practices. The goals for owning the lands are twofold: 1) to demonstrate sustainable forestry methods that provide both high-quality wood products and essential forest habitats and 2) to provide an additional revenue stream to help fund environmental education programs.



## Suzy Engler Camp Scholarship Fund

The Tin Mountain Conservation Center provided children with scholarships to attend summer camp programs this past year through their Suzy Engler Scholarship Fund. The Fund honors the late Suzy Engler. Suzy was the Administrative Assistant at Tin Mountain for many years and was especially interested in providing children with "hands-on" nature camp experiences.

## Planned Giving Opportunities

**Bequests:** Bequests must satisfy personal and family obligations first; however, donors may also include Tin Mountain in their estate planning. Making Tin Mountain a beneficiary helps ensure that Tin Mountain's work will continue in future years while reducing estate taxes.

**Charitable Remainder Trusts:** Remainder trusts allow donors to transfer assets like stock to a trust and still retain its income for life. Ultimately, the assets become TMCC's, allowing the donor to keep an asset's income, avoid capital gains tax on its sale, take an income tax deduction, and make a commitment to TMCC's future.

**Charitable Lead Trust:** Lead trusts allow donors to keep assets while giving Tin Mountain their income for a specified period of time. Donors receive an immediate gift tax deduction for the full present value of the asset. This is a good way to pass assets on to heirs at full value while supporting Tin Mountain.

*For more information on the Suzy Fund endowment, or planned giving options, contact Executive Director, Michael Cline at (603) 447-6991 or write to him at 1245 Bald Hill Road, Albany, NH 03818. Tin Mountain also happily accepts and liquidates gifts of stocks and bonds.*

## Endowment Fund

Tin Mountain Conservation Center maintains an endowment as a designated fund with the New Hampshire Charitable Foundation (NHCF) in Concord. The NHCF invests, manages the \$524,439 principal, and makes annual distributions to Tin Mountain from the earned interest based upon pre-determined calculations that ensure a certain level of growth in the designated fund. In fiscal year 10/01/13-9/30/14, interest distributions to Tin Mountain's general operations amounted to \$17,518. The NHCF's Combined Investment Fund is recognized as one of the most secure places for a nonprofit to build an endowment.



Bill Brochu

# FINANCIAL STATEMENT

October 1, 2013 - September 30, 2014

(With comparative totals for Oct. 1, 2012 through Sept. 30, 2013)

Statement of Financial Position as of	9/30/2014	9/30/2013
<b>Assets:</b>		
Capital Reserve	\$ 57,470	\$ 52,293
Cash & Equivalents	\$ 107,611	\$ 88,482
Accounts Receivable	\$ 3,053	\$ 24,789
Pledges Receivable	\$ 6,631	\$ 98,882
Inventories, Undeposited Funds, Other	\$ 4,066	\$ 2,800
Property & Equipment (net of depreciation)	\$ 2,409,953	\$ 2,334,166
Investment Fund (NH Charitable Fndn.)	\$ 524,439	\$ 479,448
<b>Total Assets:</b>	<b>\$ 3,113,223</b>	<b>\$ 3,080,860</b>
<b>Liabilities:</b>		
Accounts Payable & Accrued Expenses	\$ 8,952	\$ 10,580
Mortgage	\$ 228,730	\$ 237,300
<b>Total Liabilities</b>	<b>\$ 237,682</b>	<b>\$ 247,880</b>
<b>Net Assets:</b>		
Unrestricted General Fund, Equip. & Prop.	\$ 2,269,884	\$ 2,291,614
Temporarily Restricted	\$ 81,218	\$ 61,918
Permanently Restricted	\$ 524,439	\$ 479,448
<b>Total Net Assets:</b>	<b>\$ 2,875,541</b>	<b>\$ 2,832,980</b>
<b>Total Liabilities &amp; Net Assets:</b>	<b>\$ 3,113,223</b>	<b>\$ 3,080,860</b>

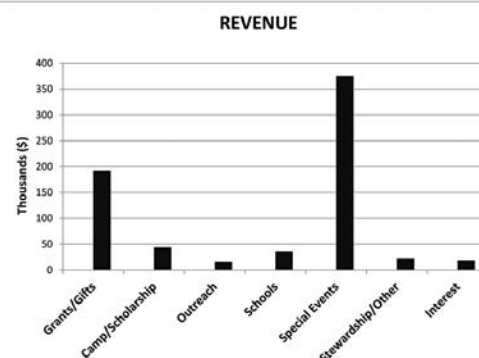
Statement of Activities	10/1/13-9/30/14	10/1/12-9/30/13
<b>Revenue and Support:</b>		
Grants, Gifts, Donations, Membership	\$ 192,519	\$ 205,901
Camp Revenue & Scholarship	\$ 43,997	\$ 41,706
Community Outreach Programs	\$ 15,363	\$ 12,285
School Program Support	\$ 36,460	\$ 54,360
Special Events & Misc. Fund Raisers	\$ 375,706	\$ 363,430
Stewardship, Rental, Store & Other	\$ 22,085	\$ 48,704
Interest (including NH Charitable Fndn.)	\$ 17,989	\$ 20,614
<b>Total Revenue and Support:</b>	<b>\$ 704,119</b>	<b>\$ 747,000</b>

<b>Expenses:</b>		
Administration	\$ 72,125	\$ 80,102
Fundraising & Special Events	\$ 183,531	\$ 191,896
Community Outreach Programs	\$ 108,264	\$ 110,784
School Programs	\$ 80,391	\$ 108,802
Summer Camp Programs	\$ 68,088	\$ 76,953
Stewardship, Grant Projects, Other	\$ 163,433	\$ 156,970
Temp. Restrictd funds released for Projects	\$ (41,730)	\$ (22,407)
Depreciation	\$ 61,224	\$ 59,205
<b>Total Expenses:</b>	<b>\$ 695,326</b>	<b>\$ 762,305</b>

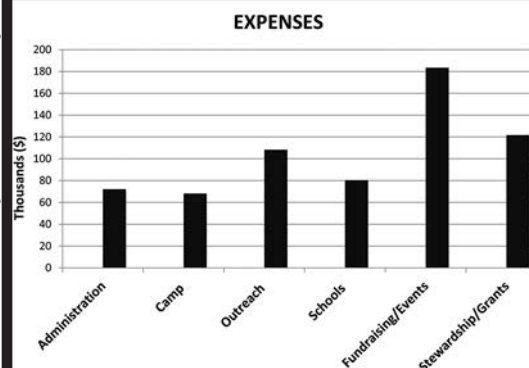
**Excess/deficit of revenue over expenses:** \$ 8,793 \$ (15,305)

<b>Other Activities:</b>		
Cabin Project Expenses	\$ 131,487	\$ 20,145
Capital Reserve Transfer	\$ 10,000	\$ 10,000
Loan Principal Payments	\$ 8,570	\$ 8,210
Railings (fy 13-14) Van purchase (fy 12-13)	\$ 5,523	\$ 2,000
<b>Total Other Activities:</b>	<b>\$ 155,580</b>	<b>\$ 40,355</b>

## REVENUE



## EXPENSES



Full Financial Report  
Available on Request



BECOME A MEMBER ONLINE  
TINMOUNTAIN.ORG

# TIN MOUNTAIN CONSERVATION CENTER CONTRIBUTORS

## LIFE TIME MEMBERS

Joe & Judy Burgess  
T.O. Currier  
Stuart Feldman  
William Lee  
Bob Santoro  
Tara Taylor  
Enya Taylor-Currier

## MEMBERS & ANNUAL DONORS

Anonymous  
Anonymous Family Fund  
William & David Abbott-Paige  
The Adair Family  
Mark & Ingrid Albee  
Allan Aldrich Jr. & Linda Comeau  
Albert Alex  
Huntley & Joyce Allan  
Linda Allen  
Jeanette & William Almy  
Anthony & Maura Ammendolia  
The Evenor Armington Fund  
Tony & Ellen Andreano  
Helen Andreoli  
Roy & Duddie Andrews  
Jeremy Angell  
Anna Stickney Chapter DAR  
Peter & Betsy Appleby  
Doug & Candy Armstrong  
Glenn & Trish Ashworth  
Deb Ayers  
Angus Badger & Rachel Vose  
Dick and Mary Badger  
Joe Bagshaw & Melinda Coyle  
Judith Bailey &  
Stephen Oppenheim  
D William Baird  
Dean & Gayle Baker  
Lori & Frank Balantic  
Bill Ballou  
Patricia Barker  
Stephanie Barnes & Barbara Fortune  
The Barry Family  
Cindy Barstow  
Don & Cindy Bean  
Susan Beane & Peter Smith  
Dr. James & Marilyn Beattie  
Andrew Bechtold  
Lawrence & Holly Beck  
The Benevity Community Impact Fund  
Ann & Richard Bennett  
Emily & Peter Benson  
Bergeron Technical Services, LLC  
Kathy & Ed Bergeron  
Gene & Sue Bergoffen  
Mary Jane Bernstein  
Katrine Biddle & Frank Mann  
Waltraud & Marv Bihn  
George Bishop  
Ed & Karyl Bisson  
Bonnie Bonneau  
The Bonsignore Family  
Bradford Borden  
Paul & Claire Bouffard  
Bob Bowman & Lori Tradewell  
Boy Scout Troop 150  
George Bradford  
Betsy Bradt  
Jean Brauel  
Eileen & Bill Brochu  
Chuck & Terri Brooks  
Allen & Joanne Brooks  
Dick & Connie Brown  
Dave Brownell

John Bruni & D. D. Warren  
Joyce A. Bryant &  
Patricia McFarlane  
Thaire & Deborah Bryant  
Joe and Judy Burgess  
Andrew & Alison Burke  
Ryan & Stacey Burke  
Doug & Kathy Burnell  
Mr. & Mrs. George Burton Jr.  
Charles & Marilyn Butler  
Dick & Nancy Byrd  
The Caffrey Family  
Vicki & John Cannell  
Dorilda Card  
Cal & Cindy Carpenter  
David & Irene Carriere  
Carroll County Altrusa Foundation  
William & Kathleen Casey  
Lawrence & Nancy Cassidy  
Scott Cecil & Eleanor Pansar  
Anne Chace  
Chalmers Insurance Group  
John Chanley  
Helen Chapell  
Bill & Lissa Chapin Jr.  
Shannon & Derek Chesley  
Christopher P. Williams Architects  
George & Aila Clausen  
Stephen Clifford  
Rick & Julie Coffin  
Dixie & Buzz Coleman  
Sarah & David Collins  
Susan Colten  
Jean & Paul Conley  
Gary E. Cole, O.D.  
Jim Coogan & Becky Knowles  
Steven & Lisa Cote  
Peter Crane & Holly Huhn  
Ronald Cranshaw &  
Rosemary Gerbutavich  
Linda Cryan  
Cheryl Cullion  
Laura Cummings  
George & Priscilla Cunningham  
David, Jeanne, Quin & Reese Daly  
Marilyn D'Aquanni  
Don & Edith Dashnau  
Jeanne & Daniel De Christopher  
Tom & Penny Deans  
Judy & Joe Dedinsky  
Linda Denis  
Dr. Robert F. Denoncourt  
Natalie Desjardins  
Timothy Devine  
Peg, Michael, Tianna &  
Thomas Dewar  
Glenn DiGregorio & Vinette Barnes  
Matthew DiMaio III  
Mary Dindorf  
Anne Lee Doig  
Marc Donaldson  
Larry & Cathy Donoghue  
Heath & Sean Doucette  
Ann Doucette  
David & Barbara Douglass  
John & Elaine Doyle  
Linda & Hank Dresch  
Rebecca Drewette-Card  
Jim & Jeannie Drummond  
Roland & Bette DuBois  
Frances Duffy  
Justine Dunham  
Jack & Pattie Dunn  
Laurie East  
Sarah Eastman  
Mary Jane Elwell  
Don & Rosalie Emond

H. David Evans  
Melissa & Steven Evans  
Dawn Farnham  
Charlie & Margaret Felton  
Dick & Anne Ficke  
Kim T. Field  
Anne Filson  
Jill Flint-Barber  
Gay Folland  
Carol & William Foord  
Forest Glen Inn Owners Assn.  
Henry Forrest  
Betsy & Brian Fowler  
Judith Fowler  
Brian Fox  
David & Deborah Freedman  
Freedom Community Club  
Patricia Freysinger  
Albert G. & Jeanette D. Friend  
Frost Mountain Yurts, LLC  
Anne & Stephen Frost  
Phil & Sue Fuller  
Paul & Terry Gagnon  
Theresa Ann & James F. Gallagher  
Anne Garland & Joanne Clarey  
Larry Garland  
Keith Garrett  
Greg Garrick  
Timothy Garrison  
Steven & Debra Gendall  
Timothy George  
Carlotta & John Girouard  
Steve Glasgow,  
Kristin DiBella & Family  
Don & Susan Goodwin  
Pat & Dale Goodwin  
Joseph & Phyllis Gorman  
Marie Gosselin  
Sheldon & Jeanne Gottlieb  
Allen S. & Joy Gould  
David Govatski  
Nancy & Al Goyette  
Linda Gray & David Gotjen  
Jack & Regina Greely  
Green Thumb Farms  
JJ & Joanne Green  
Nancy Greer  
Roger & Linda Grucel  
Frank Gutmann  
Don & Wil Hall  
Larry Hall  
Susannah Halpern  
Susan Hamlin & Bob Mead  
Charles & Maureen Hanlon  
Tish Hanlon & Stephen Weeder  
Dexter Harding & Lucy Gatchell  
Sam & Betsey Harding  
Georgette & Joel Hardman  
Constance Harmon  
Carolyn Harris  
Russ & Lynne Hart  
David & Carol Hastings  
Jim & Linda Hastings  
Deborah Hatch  
Liz Hatch & Family  
Dr. Stuart T. & Barbara B. Hauser  
Ross L. Heald  
Pat & Bob Heiges  
Paul & Elaine Hennigan  
Kimberly Henry  
Susan & Jack Henry, Jr.  
Megan Heon  
Ronald & Charlene Hibbs  
John & Pat Higgins  
Helene & George Hill  
Jane & Gary Hoffman  
John & Patricia Hoffman

Jen & Matt Hohenboken  
Berthold & Valerie Horn  
Charles & Maureen Houghton  
Harrison & Barbara Hoyt  
Joanna Hughes & Marc Vaillant  
Priscilla & Frank Hundley  
Hunting Dearborn, Inc.  
Scott Hutchins  
Brian & Lori Irwin & Family  
Gregory Izzo  
Irene & Joe Jacintho  
The Januzzi Family  
Laura Jawitz & Gordon Cormack  
Vickie & Rick Jenkinson  
Valerie & David Jensen  
Scott Johnson & Amy Montgomery  
Mark & Natalya Johnson  
Sally Johnson  
Anna & Brian Johnston  
Amy Jones  
Arthur Joubert  
Journey Church Of C&MA  
Stu & Lida Kaiser  
Deborah Karmozyn  
The Karp Family  
Robert Katz  
Kearns Family Foundation  
Cheryl & John Keator  
Tim Keith & Bill Petry  
Joan Kelley  
Daryl Kenison  
Judy & Dan Kennedy  
Frank & Janet Kern  
Walt & Cathie Kierans  
Ken & Sarah Kimball  
Rick Klausner  
Peter & Elaine Klose  
Jerry Knirk & Cam Spence  
Joseph & Fannie Knowles  
Robin Kosstrin & Bob Yanuck  
Michael Kracht  
John & Leslie Kremer  
Ned & Judy Kucera  
Thomas Kugel  
Francine Lampidis  
James Laramy  
Joe & Michelle LaRue  
Jeff Lathrop  
Ron Lawler & Peggy Merritt  
William & Barbara Lawrence  
Ed & Marlene Lawton  
William Lee  
Lewis M. & Esther Perlstein  
Family Fnd  
Susan Licardi  
Donna M. Lietz  
Cheryl & Paul Littlefield  
Heather Littlefield  
Sean & Mary Littlefield  
Christopher Logan  
Eugene Long Jr., M.D.  
Mr. and Mrs. Longmaid  
Jane & Alan Lounsbury  
Catherine M. Lovequist  
Chet & Lydia Lucy  
Roy Lundquist  
Karen Travers Lynch & Mike Lynch  
Gary & Karen MacDonald  
George & Ann Macomber  
Joan MacPhail  
Marni Madnick & Bob Schor  
Linda & Scott Mahler  
Maine Dry Stone-Chris Tanguay  
The Manero Family  
Gordon Mann  
Maple Leaf Motel  
Tracy Marnich



# TMCC CONTRIBUTORS

Robert & Nancy Marquis  
 Richard E. & Nancy P.  
 Marriott Fnd, Inc.  
 Margaret & Sut Marshall  
 Dave & Jeanne Mason  
 Pam & Phil Mason  
 John & Barbara Matsinger  
 David Maudsley  
 Erin Mayo  
 Joe & Daryl Mazzaglia  
 Doreen McCanin  
 Frank & Terry McCarthy  
 The McCluskey Family  
 Robert McConaghy  
 The McIndoe Family  
 Braden McKenzie & Virginia Ward  
 Kenneth & Linda McKenzie  
 Patricia McMurry  
 Wendy & John McVey  
 Jim & Anita Meehan  
 Cynthia Melendy  
 John & Catherine Mersfelder  
 Dale Messenger  
 Kathy & Bob Metz  
 Doris Meyer  
 Richard & Robin Lurie-Meyerkopf  
 Elizabeth Mills  
 Catherine & Christopher Milton  
 Gael R. & Ty Minton  
 Judy & Jim Mirabella  
 Tom Mitchell  
 The Moffett Family  
 Charles & Pamela Monaghan  
 Virginia Monnes  
 Cynthia Morgan  
 The Morneau Family  
 Miriam Andrews Morrell  
 Nancy Lee Morrell  
 Olga & Steve Morrill  
 Nancy Morrison  
 Marge & David Morrison  
 Mountain Garden Club  
 Dawn Mulvey  
 Joyce Munise  
 Bob & Jean Murphy  
 Gene Chandler  
 NEMBA-White Mountains Chapter  
 NH Assn of Conservation  
 Commissions  
 NH Funeral Resources & Advocacy  
 Janice & Steve Nichipor  
 Charlie Nims  
 Northeastern Lumber Mfr Assoc  
 Daniel Oberlander  
 Brenda & Ray O'Brien  
 Grace & Thomas O'Connor  
 Martin & Michelle O'Donnell  
 Dave, Kerry & Sophie Oedel  
 Donald & Marilyn Olivier  
 Osgood Family  
 Neill Osgood  
 Michael & Pamela Otis  
 Dan & Jeanne Ouellette  
 Lisa & Paul Paglierani  
 Gail Paine  
 Priscilla Parent  
 Karen & David Parker  
 Kristopher Paulsen  
 John & Alice Pepper  
 The Peterson Barthel Family  
 John A. Peterson  
 Anne Peterson  
 Karl & Susan Pfeil  
 Carol Pierce  
 The Piotrow Family  
 Richard Plusch  
 Lee & Sylvia Pollock  
 Barbara A. Porter  
 Alix & Bob Pratt  
 Jean and Bill Preis  
 Alice Proctor  
 Timothy Psaledakis  
 Buzz & Jane Query  
 Richard Quint  
 Ken & Jane Rancourt  
 Ted & Judy Raymond  
 Eileen & Joe Redmond  
 Greg & Laura Reinbach  
 Faith & Thomas Reney  
 Richard H. Reuper  
 Curt & Jill Reynolds  
 David & Emilie Riss  
 River Run Company, Inc.  
 Peter & Charlene Roberts  
 Tal Roberts  
 Dean and Judy Robertson  
 Frank J. Robey  
 Jean & John Roccio  
 Seth Rockwell  
 Lynn Rockwell &  
 Roman Kokodyniak  
 Marilyn M. Rodes  
 Jason Roth  
 Ron Routhier & Patricia Murphy  
 Anthony Ruddy &  
 Lisa Baumgartner  
 Brett & Cindy Russell  
 Arlene Russell  
 Elbridge & Linda Russell  
 The Ryan Family  
 Saco Valley Mineral & Gem Club  
 Cindy Sauerwein  
 Glenn & Sonni Saunders  
 Elaina Sayles  
 Leslie & Warren Schomaker  
 Tara Schroeder  
 Joe Scott  
 Frank & Elizabeth Seabury  
 David & Judith Seddon  
 Jon Seliger  
 Wendell Shaffer  
 Paula Shappell  
 Mary Ellen Shea  
 Terry Sheridan  
 Dix Shevalier & Laurie Gilmour  
 Robert Silvestre  
 Rick Simmons & Carol Mancinelli  
 Mr. & Mrs. William T. Simonds  
 Nancy & Ward Simonton  
 Ted & Bonny Slader  
 Lyn Slanetz  
 Peter B. Smith  
 David & Diane Smith  
 Laurel Smith & Kevin Donohoe  
 The Snell Family  
 Elizabeth T. Snyder  
 Dr. Faye & Donald Soderberg  
 Doug & Kathy Somerville  
 Dave Sordi  
 Darlene & Warren Spence  
 Cindy Spencer  
 Felicia & Chris Sperry  
 James & Wendy St. Pierre &  
 Family  
 Connie & Bob St. Pierre & Family  
 Staff Of South River School  
 Matthew Stearns  
 Rick & Jean Steber  
 Helen Steele  
 Susan Steller  
 Linda Stetson  
 Morey Stettner & Margie Wachtel  
 Allen & Lynn Stevens  
 Diana Stevenson  
 Kathy & Dick Stewart  
 Eleanor & Emery Stokes

## CABIN PROJECT DONORS

Anonymous Donor  
 Michael L. Cline  
 Judith Fowler  
 Theresa & James Gallagher  
 Ham Charitable Foundation Inc.  
 James & Linda Hastings  
 Peter & Elaine Klose  
 Sean & Mary Littlefield  
 George & Ann Macomber  
 David & Jeanne Mason  
 Karl & Susan Pfeil  
 Seth Rockwell  
 Ron Routhier & Patricia Murphy  
 Anthony Ruddy & Lisa Baumgartner  
 Nancy & Ward Simonton  
 David & Beth Sturdevant  
 Westmeadow Fund/NH Charitable Fnd  
 Christine Wray & John Felicitas

## TRUCK FUND DONORS

Jim & Linda Hastings  
 River Run Company

Robert & Suzanne Stone  
 Story Land - Jack Mahany  
 Marc & Sue Stowbridge  
 Sandy Stowell  
 Marvin & Judy Swartz  
 Jean Sweeney  
 Imre & Deborah Szauter  
 Joe & Michele Szympruch &  
 Family  
 Rick & Sue Talbot  
 Mike Tamulis  
 Tamworth Lyceum  
 Bruce & Debbie Taylor  
 Charles & Bebe Taylor  
 Tara Taylor & T.O. Currier  
 Bob Teichman  
 Mr. & Mrs. Bradley R. Thayer  
 Mary Judge Thayer  
 Gloria & Tom Hutchings  
 The Perrin Family  
 The Sandahl Family  
 Brenda & Don Thibodeau  
 Beth & Kim Thomas  
 Lisa Thompson  
 Kate Thompson  
 Jean Macomber Thompson  
 Richard & Beth Thompson-Tucker  
 Sandy & Bill Thoms  
 Judy & David Tiberio  
 Lorraine & Bob Tilney  
 Ruth Timchak  
 Townley Family  
 Gail Troseth & John Wheeler  
 Charles Tryder  
 Linda Turcotte  
 Hillary Twigg-Smith  
 Rick Van de Poll  
 Johanna & Dennis Vienneau  
 Arthur & Carol Viens  
 Jennifer Viger  
 Don-MaryLou Waite  
 Andrea Walsh & Andy Davis  
 Miles & June Waltz  
 Barry Ward  
 John S. Ward Family  
 Judy Ward  
 Wardner Gilroy Trust  
 Richard Ware  
 Merle & Herm Weber  
 Dr. Harvey Weener  
 Howie & Sue Wemyss  
 Susanna West  
 George & Laurie Weston  
 Paul Whetton  
 Donna Whipple  
 Glenn Saunders  
 White Mountain Oil & Propane, Inc.  
 White Mtn. Home Builder's Assoc.  
 Jeff White & Joyce Peseroff  
 Jennifer Hocking Wiley  
 Chris & Ann Williams  
 Judith Wilson  
 Steve & Maureen Wilson  
 Marquerite Witkop  
 Bill Wogisch  
 Michael Wolfson  
 Betsy Hatton Wood  
 Denise & Steve Woodcock  
 Thomas & Judy Workman  
 Christine Wray & John Felicitas  
 Lesley Wright & Donald Doe  
 Moira Yip  
 Suzanne Young  
 Arlene & Charlie Zaccaria  
 Peter & Margaret Zack  
 Ellen & Andrew Zelman

# GRANTS AND RESTRICTED GIFTS

## BEAR PAW CAMP SITE

Anonymous

## COMMUNITY/OUTREACH PROGRAMS

LL Bean Inc.

The Evenor Armington Fund

## GENERAL SUPPORT

Cabin Fever Restaurant

Dixie & Buzz Coleman

Flatbread of North Conway

Frost Mountain Yurts

Gaye Gould

James Laramy

Lewis & Esther Perlstein Family Foundation

Mariott Foundation

Masonic Lodge North Conway

Pete's Restaurant Supply

Pizza Shed

Lynn Rockwell & Roman Kokodyniak

Story Land

Tamworth Lyceum

The Evenor Armington Fund

Wardner Gilroy Trust

White Mountain Milers

## INTERN PROJECT

Anonymous

## JACKSON PROPERTY

Anonymous

## MAY TERM FRYEBURG ACADEMY

The Clarence E. Mulford Trust

## PROJECT K.I.T.E. BERLIN GORHAM SCHOOLS

Anonymous

## RENEWABLE ENERGY

Anonymous

Robert & Dorothy Goldberg Charitable Foundation

## RESIDENT BIRD RESEARCH

Anonymous

Davis Conservation Foundation

# MEMORIAL GIFTS

## Ben and Barbara Rockwell

*Elizabeth Mills*

## Dorothy "Doss" Brownell

*Peter & Betsy Appleby*

*Susan Beane & Peter Smith*

*Paul & Claire Bouffard*

*George Bradford*

*David & Irene Carriere*

*Linda & Hank Dresch*

*James & Jean Drummond*

*Laurie B. East*

*Vickie & Rick Jenkinson*

*The Januzzi Family*

*Jim & Anita Meehan,*

*Tom Mitchell*

*Charles & Julie Osgood Family*

*Staff of South River School*

*Paul D. Whetton*

## Jim Hastings Sr.

*Susan Beane & Peter Smith*

*James & Linda Hastings*

## Phil Kelley

*Eagle Mountain House & Golf Club*

*The Moffett Family*

*Judith Wilson*

## Stephen Card

*Rebecca Drewette-Card,*

*Jeanne & Daniel De Christopher*

*Joyce Munise*

*Dorilda Card*

*"The search for truth is in one way hard and in another way easy, for it is evident that no one can master it fully or miss it wholly. But each adds a little to our knowledge of nature, and from all the facts assembled there arises a certain grandeur."*

*Aristotle*

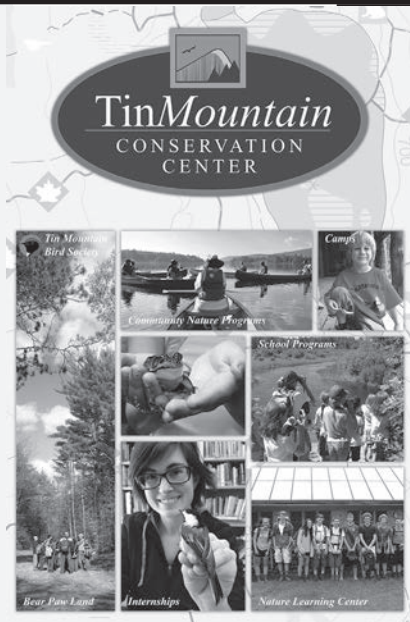






## CAMP STAFF 2014

Helen Badger  
Emily Brown  
Katherine Doyle  
Molly Doyle  
Tessa Greenhalgh  
Jenna Hill  
Kelly Horrigan DeVries  
Kristin Nelson Groves  
Camille Rohde  
Dawson Santoro  
Larissa Spaulding  
David Weston

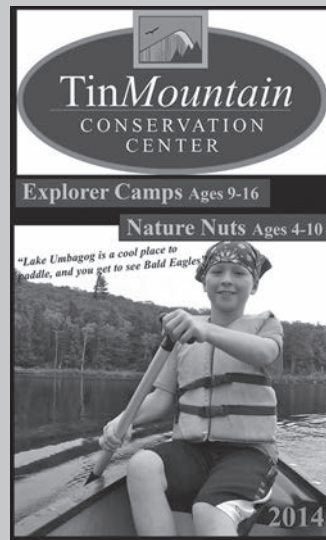


## College Scholarship Fund

Susan Beane & Peter Smith  
Ann & Richard Bennett  
Ed & Kathy Bergeron  
George Bishop  
Doug & Kathy Burnell  
David Condoulis & Kim Bowker  
Timothy George & Robin Govoni  
Tracy Marnich  
Anne Peterson  
Nancy & Ward Simonton

## Camp Brochure

LL Bean  
Ragged Mountain  
Saco Bound



## Special Thanks

Kiwanis Club of North Conway  
Eastern Mountain Sports  
Mountain Garden Club  
Gem and Mineral Club

## Camp Scholarships

Jeremy Angell  
Roy & Duddie Andrews  
Helen Andreoli  
Dean & Gayle Baker  
Bushee Thorn Mountain Trust  
Carroll County Altrusa Foundation  
Anne Chace  
Thomas O. Currier Jr. & Tara Taylor  
Marilyn D'Aquanni  
Eastern Mountain Sports Club Days  
Eaton Conservation Commission  
Richard & Anne Ficke  
Gay Folland  
Steve Glasgow & Kristin DiBella  
David Gotjen & Linda Gray  
Sam & Betsey Harding  
Pat & Bob Heiges  
Paul & Elaine Hennigan  
Jen & Matt Hohenboken  
Brian & Lori Irwin  
Laura Jawitz & Gordon Cormack  
Valerie & David Jensen  
Scott Johnson & Amy Montgomery  
Kiwanis Club of Mt. Washington Valley  
Robert & Nancy Marquis  
Margaret & Sut Marshall  
David & Jeanne Mason  
Erin Mayo & Peter Gurnis  
Mountain Garden Club  
Nancy Chandler-Brett Beyerle Memorial Fund  
Barbara Ann Porter  
Frank & Elizabeth Seabury  
Dix Shevalier & Laurie Gilmour  
Sandy & Bill Thoms  
Charles Tryder  
Howie & Sue Wemyss

# FIRST SEASON AUCTION AND BENEFIT DINNER 2014

## THANK YOU TO OUR SPONSORS

THE FIRST SEASON FESTIVAL IS SPONSORED BY:



Thank you to Mount Washington Valley Area Businesses  
Tin Mountain Trustees, Volunteers and Supporters

Tin Mountain Conservation Center fosters a deep appreciation for our environment among children, adults and families through hands-on programs in schools, at summer camps, and throughout the community. Over the past thirty five years, Tin Mountain has provided quality programs to more than 38,000 individuals.

1785 Inn  
A Better Body  
Albany Pet Care  
Alice Ogden Black Ash Baskets  
Alkalay & Smillie, P.L.L.C.  
Alvin J. Coleman & Sons  
AMANA  
Andrea Kennett  
Andy Davis Storyteller  
Ann Bennett  
Appalachian Mountain Club  
Attitash Mountain Resort & Wildcat  
Awesome Massage  
B.N.I.  
Backcountry Bakery & Café  
Barbara Sperling  
Bavarian Chocolate Haus  
Bea's Café  
Beggar's Pouch  
Berry Knoll Farm  
Bert Weiss Studio  
Big Dave's Bagels & Deli  
Bill & Jeanette Almy  
Black Cap Grill  
Black Mountain  
Bob Grant Photography  
Bobby-Sue's  
Boston Red Sox  
Brenda and Don Thibodeau  
Brian Fowler  
Café Noche  
Canobie Lake Park  
Canoe King Of New England  
Carolyn's Valley Tailor Shop  
Cassidy Gallery at Jackson Village  
Castle in the Clouds  
Celia Pray  
Center for Natural Health  
Chalmers Insurance Group  
Chamberlain Farm  
Chatuaqua Hills Pottery  
Cheryl and Paul Littlefield  
Cheryl's Clipper Cuts  
Chick Home Center  
Clark's Grain  
Cold River Radio Show  
Cole Scott Photography  
Coleman Rental & Supply Inc.  
Comfort Inn & Suites/Pirate's Cove  
Adventure Golf  
Community Market and Deli  
Computer Port  
Conserve Car Wash  
Conway Scenic Railroad  
Conway Veterinary Hospital  
Conway Village Dental  
Cool Jewels  
Cooper, Cargill, Chant, PA  
Country Cabinets, Etc.  
Covered Bridge Shoppe  
Cranmore Mountain Resort  
Crazy Mittens  
Customfit  
Dairy Queen Grill & Chill  
Dawson's Creations  
Designs... by Deb Samia  
Dick Brisbois  
Don & Marilyn Olivier  
Dr. Scott Ferguson  
Dragonfly Massage  
Dunkin Donuts  
Dutch Bloemen Winkel  
Eagle Mountain House  
Earth and Fire Studio Gallery/League of  
NH Craftsmen  
Eastern Inns  
Eastern Mountain Sports  
Eastern Mountain Sports/Outdoor School  
Eaton Village Store  
Ed Bergeron  
Edge of Maine Gallery  
Edith Dashnau  
Elvio's Pizzeria  
Emily and Peter Benson  
Fairbanks Museum and Planetarium  
Farm by the River in Effingham  
Fields of Ambrosia  
Flatbreads Company  
Four Your Paws Only  
Frechette Tire  
Freedom Computer  
Freedom Computer  
Friend of Tin Mountain  
Fryeburg Academy  
Fryeburg Fair Assoc  
Fryeburg Veterinary Hospital  
Funspot  
Gail Zimmerman  
Garden Dreams  
Gayle Baker Valley Travel  
Gemini Signs  
Glass Wear  
Glen Junction Restaurant  
Grand Summit Hotel & Conf. Ctr.  
Granite Wall Heritage House - Gallagher  
Grant's Supermarket Glen  
Great Glen Trails  
Green Thumb Farms



Hair Designs  
Hale's Location Golf Course  
Ham Arena  
Hampton Inn & Suites  
Handcrafter's Barn  
Hannafor's  
Harrison Hoyt  
Hart's Turkey Farm Restaurant  
Harvest Hills Animal Shelter  
Hastings Malia Law Office  
Heather Littlefield  
Heidi Root  
Hill's Florist and Nursery  
Hill's RV  
Ikebana Flower  
IME  
Infinger Insurance  
Inn at Crystal Lake  
J&J Floorcovering  
Jack Wolter  
Jackson Art Studio & Gallery  
Jackson Historical Society  
Jackson Home and Garden  
Jackson Ski Touring Foundation  
Jay Rancourt  
Jean Brauel  
Jerry's Bloody Mary  
Jessica Mixer Handmade Jewelry  
Jewelry by Timothy Psaledakis & Friends  
Jill Reynolds  
Joe Burgess  
Johanna Vienneau  
John McNall  
Johnson Auto Care  
Jon Whitney  
Karen Brisbois  
Karen Eisenberg Designs  
Karla's Pet Rendezvous  
Kathy Bergeron  
King Pine Ski Area  
Kiwanis Club of Mount Washington Valley  
Klementovich Photography  
Kringles Country Store  
Lake Kezar Country Club  
Landscape & Garden Supply of Maine  
Lee Pollock  
Leslie David Company  
Leura Hill Eastman-Fryeburg  
Limmer Boot Inc  
Linda Gray  
Linda Sorensen Jewelry  
Linda Stetson  
Lindsey's Paint & Wallpaper  
Lindt Chocolate  
Lisa Gardner  
Little Field Farm  
Lone Star Jewelers  
Lori Jean Kinsey  
Lupine, Inc  
M&M Assurance Group, Inc.  
Macomber Glass  
Magic 104 FM/(3.5 WMWV  
Manchester Monarchs  
Marnie Cobbs  
Martha Benesh  
May Kelly's Irish Restaurant and Pub  
McAuliffe - Shepard Planetarium  
McKaella's Sweet Shop

Miles Waltz  
Milford Flooring  
Moat Mountain Smokehouse/Brewing Co.  
Mount Washington Observatory  
Mount Washington Ski Touring Ctr  
Mountain Streams Music  
Mountain Top Music Center  
Mt. Washington Auto Road  
Muddy Moose  
MWV Children's Museum  
MWV Mall Theatre  
NAPA Redstone  
Nature's Reflections Photography  
New Business Direction  
New England Embroidery  
New England Hiking & Tennis  
NH Fisher Cats  
Nordic Village Resort  
North Conway Country Club  
North Conway Music Center  
North Country Angler  
North Country Dental  
North Country Fair Jewelers/Valley  
Jewelers  
North Country Wholesale  
Northeast Auto Body  
Northeast Gems  
Northeast Snowmobile Rentals  
Northway Bank  
Norway Bank  
Norway Laundry and Linens  
Off the Beaten Path  
Old Village Bakery  
One Good Turn  
Outside Television  
Papa's Florist and Gift Shop  
Peach's Restaurant  
Pepsi Varsity  
Pepsi Varsity Beverage  
Peter Blue  
Peter Hagerty  
Peterson Woodworking  
Pinetree Power/Tamworth  
Portland Glass  
Portland Symphony Orchestra  
Priscilla's Country Kitchen  
Purity Spring Resort  
Quinn's Jockey Cap Store  
Quisiana on Lake Kezar  
R & R Woodworkers  
Ragged Mountain Equipment  
Reliable Oil Proulx Oil and Propane  
RePeace Goods  
Residence Inn by Marriott  
Richard M. Plusch Antiques  
Rick Gerber  
River Stone Muscular Therapy  
RockHouse Mountain Photography  
Rockingham Electric  
Russ and Joan Lanoie  
Saco River Canoe & Kayak  
Saco River Medical Group/Physician  
Engineered Products  
Saco River Pottery  
Saco Valley Gem & Mineral Club/York  
Sally Bags  
Sandwich Creamery  
Santa's Village  
Sawyer River Knife and Trading Co  
Scarecrow Pub  
School House Farm  
Schwoolies  
Senator Jeanne Shaheen  
Servicemaster  
Settlers' Green Outlet Village  
Shalimar of India  
Shaw's Supermarket  
Shepard River Draft Horse Company  
Sherri Belfus  
Showcase Events  
Silver Moon Mosaics  
Silver Paw Pet Tags/Metalscapes  
Silverline Graphics  
Snow Brook Creations



## AUCTION DONORS CONT

Snowvillage Inn  
Spice & Grain  
Spruce Hurricane  
Squam Lakes Natural Science Center  
Stan Bodkins  
Star Island Corporation  
Starbuck's  
Stefi Hastings  
Steve & Lois Caffrey  
Stone Mountain Arts Center  
Stonehurst Manor  
Storyland  
Sunshine Daydream Farm & Gardens/  
Michelle DeLucia  
Sweet Maple Café  
Swift River Wood Products  
T. Murray Wellness Center, Inc  
Thaddeus Thorne Surveys Inc.  
The Antarctic Connection  
The Children's Museum of NH-Dover  
The Conway Daily Sun  
The Darby Field Inn and Restaurant  
The Local Grocer  
The Lyceum  
The Met Coffee House  
The Mountain Ear  
The Oxford House Inn  
The Root Cellar  
The Sunrise Shack  
The UPS Store  
The Wooden Soldier  
Theresa Beckett  
Timber Bay Garden Art  
TMC Books  
Toy Chest  
Tree Lady Photography  
Tribal Trills/Barbara Boxer  
Trumbull's Hardware  
Uberblast  
Valerie Hession  
Vintage Baking Company  
Vintage Frameworks  
Waterford Wedgwood Royal Doulton  
Wavelengths Hair and Nail Salon  
Wendy Ketchum  
Wentworth Golf Club  
West Branch Traders of ME.  
Weston's Farm Stand  
White Birch Books  
White Horse Gear  
White Horse Gear  
White Lake Speedway  
White Mountain Aquatic Foundation  
White Mountain Cider Company  
White Mountain Cupcakery  
White Mountain Hotel  
White Mountain Hotel & Resort  
White Mountain Hypnosis Center  
White Mountain Photo-Gallery  
White Mountain Puzzles  
White Mountain Stove Shop  
Wild Light Images  
Windy Ridge  
With These Hands Pottery  
WMWV 93.5/ Magic 104  
WOKQ 97.5/WPKQ 103.7  
Write Stuff  
Z P Sports  
Zeb's General Store  
Zumba Fitness w/Dotti Aiello

### Donations:

Anonymous  
Patricia Barker  
Jean Brauel  
David & Jeanne Mason  
Milford Flooring

### Special Thanks to:

Fryeburg Academy  
Joe Manning  
Chef Alan Whitaker  
Interact Club  
Fryeburg Fair Association  
Mountain Top Strings  
Steve Graustein  
Dwight DeMille

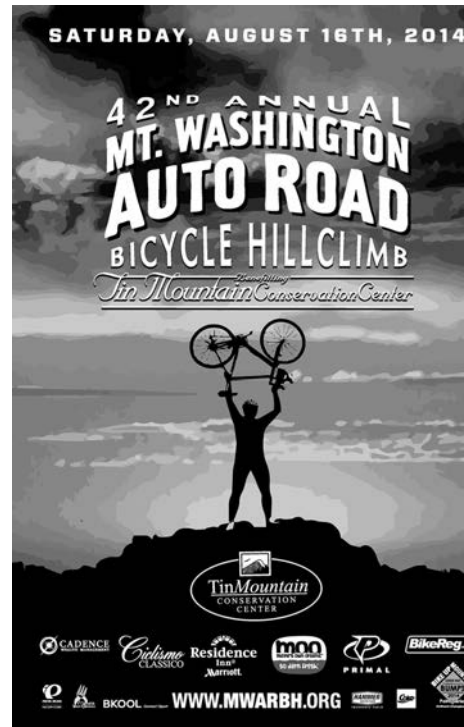


## CENTURY SPONSORS:

Residence Inn by Marriott North Conway  
Pearl Izumi North Conway Factory  
VDO cyclecomputing  
CliffBAR  
Eastern Mountain Sports  
PRIMAL Wear  
Quisisana Corp. II  
White Mountain Hotel & Resort  
Hannaford Supermarket  
Shaws Supermarket  
Lakes Region Coca-Cola  
Memorial Hospital  
Oakhurst Dairy  
Red Jersey Cyclery  
Fandangle's Catering  
Old Village Bakery  
Harrison Creative  
Conway Daily Sun  
The Mountain EAR  
93.5 WMWV  
Magic 104fm  
WPKQ 103.7  
The Valley Originals  
White Mountain Amateur Radio Club  
White Mtn. Oil & Propane  
Ciclismo Classico  
Athletes Advantage Massage Therapy  
Mt. Washington Auto Road

## CENTURY DONORS:

Joshua Buckheister  
Jenn & Matt Hohenboken  
Joshua Keeney  
Peter & Elaine Klose  
Bryan Knox  
Doug Murphy  
Telephone & Network Tech  
Darius Teter  
Robert von Rekowsky



## HILLCLIMB SPONSORS:

Cadence Wealth Management  
BKOOL Connect/Sport  
Residence Inn by Marriott North Conway  
Ciclismo Classico  
PRIMAL Wear  
BikeREG.com-Pioneer Registration Services  
VDO cyclecomputing  
Eastern Mountain Sports  
Pearl Izumi North Conway Factory  
The Valley Originals  
Mt. Washington Auto Road  
Oakhurst Dairy  
Lakes Region Coca Cola Bottling Co.  
Mt. Washington B&B  
Harrison Creative  
Downeast Bike Specialists  
Devils Gear Bike Shop  
Jeff Fongemie  
Hammer Nutrition  
Marti Shea Coaching  
Red Jersey Cyclery-North Conway, NH  
White Mountain Amateur Radio Club  
Frontside Grind

## HILLCLIMB DONORS:

Chris Agaiby	Renee Marino
Derke Allard	Carl Mueller
Matt Atterbury	Mark O'Connor
Lawrence Beck	Daniel Oberlander
Stacey Carter	Jonah Thompson
James Hayes	John Weaver
Norman Hildreth Jr.	Jeffrey Williams
Ryan Hodge	WH Williams
Will Lodge	Ryan Zach
Dan Mahoney	

## SPECIAL THANKS TO BUSINESSES AND INDIVIDUALS DONATING SERVICES, TIME AND PRODUCTS:

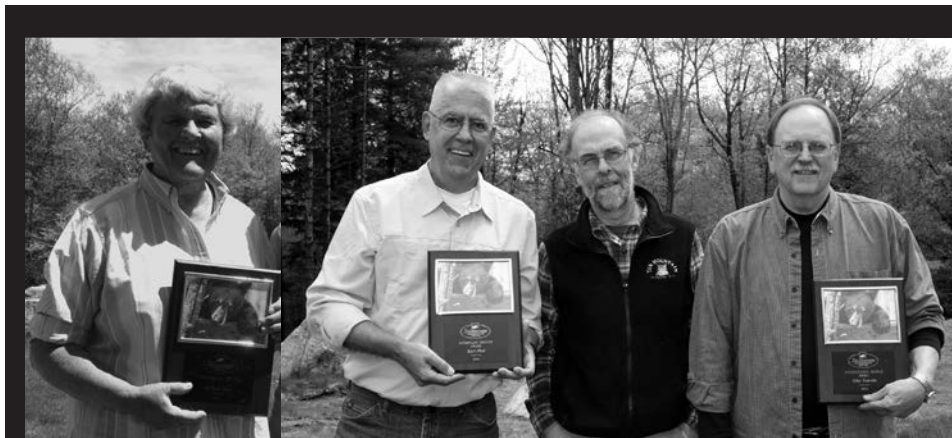
Anthony & Ellen Andreano  
Susan Beane & Peter Smith  
Bea's Cafe  
Bergeron Technical Services, LLC  
Joe & Judy Burgess  
Chandel Associates P.A.  
Coleman Rental & Supply, Inc.  
Flatbread Pizza  
Frontside Grind  
Allen S. & Joy Gould  
Grant's Supermarket  
Hannaford Supermarket  
Jim & Linda Hastings  
Harrison & Barbara Hoyt  
Charles & Pamela Monaghan  
Mt. Washington Radio  
Dawn Mulvey  
Eastern Mountain Sports  
Charlie Nims  
Karl & Susan Pfeil  
PieTree Orchard  
Timothy Psalidakis  
Paula Shappell  
Pete's Restaurant and Supply  
Shaw's Supermarket  
Sherman's Farm  
Smith & Town Printers  
Starbucks North Conway  
The Met Coffee House  
Weston's Farm  
White Mountain Oil & Propane

### Local Volunteer Groups Including:

White Mountain Amateur Radio Club  
Mountain Garden Club  
Saco Valley Gem and Mineral Club  
Kennett Key Club  
Fryeburg Interact Club  
Junior National Honor Society JBES  
Mountain Garden Club  
Pequawket Kids

### PHOTOGRAPHERS:

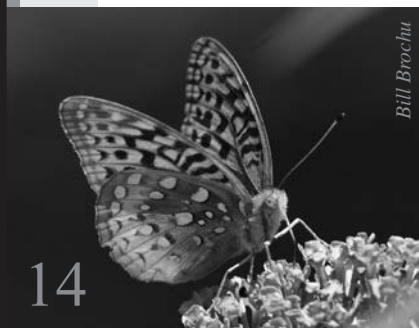
Ed Bergeron	Heather Leach
Kathy Bergeron	Chris Lewey
Bill Brochu	J.S. McElvery
Naomi Buckman	Karl & Susan Pfeil
Judy Burgess	Craig Harrison
Joe Burgess	Stefi Hastings
Carolyn Brown	Debbi Hatch
Bill Brochu	Holly Huhn
Mason Cline	Dick Pollock
Chris DeNuzzio	Mark D. Shiller
Sophia DiBella	David Sordi
Katelyn Dolan	Stephen A. Thomas
Donna Dolan	Andrew Thompson
Tom Eastman	
Debbie Eddison	
Sarah Frankel	
Jamie Gemmetti	
Leo Kenney	



Bill Almy  
Jeanette Almy  
Tony Andreano  
Duddie Andrews  
Ed Andrews  
Roy Andrews  
Candy Armstrong  
Cathleen Balantic  
Carlene Bane  
Stephanie Barnes  
Meagan Barry  
Nona Bauer  
Anne Bennett  
Emily Benson  
Peter Benson  
Bill Brochu  
Eileen Brochu  
Dick Brunelle  
Doug Burnell  
Kathy Burnell  
Brian Byrne  
Kathy Byrne  
Jeff Cohen  
Dixie Coleman  
Lorraine Cormack  
April Costa  
Christine Costello  
Bob Crowley  
Sue Crowley  
T.O. Currier  
Bruce Curtis-McLane  
Kate Curtis-McLane  
Sophia DiBella  
Cliff Dickenson  
Katelyn Dolan  
Donna Donnelly  
Betsy Donovan  
Katherine Doyle  
Bette DuBois  
Mike Duffy  
Sarah Duffy  
Mike Dufilho  
Deb Eddison  
Wayne Fitch  
Bert Flower  
Stuart Feldman  
Gay Folland  
Bryant Fong  
Barbara Fortune  
Judy Fowler  
Jim Gallagher

Theresa Gallagher  
Anne Garland  
Henry Gotjen  
Dale Goodwin  
Pat Goodwin  
Gaye Gould  
Linda Gray  
Barbara Guffin  
Tish Hanlon  
Betsey Harding  
Sam Harding  
Jim Hastings  
Joanne Hastings  
Linda Hastings  
Bob Heiges  
Pat Heiges  
Elaine Hennigan  
Paul Hennigan  
Charlene Hibbs  
John Higgins  
Pat Higgins  
Bekka Hohenboken  
Jen Hohenboken  
Matt Hohenboken  
Barbara Hoyt  
Harrison Hoyt  
Gloria Hutchings  
Greg Izzo  
Cheryl Keator  
John Keator  
Rick Klausner  
Peter Klose  
Walter Kurz  
Walter Lancaster  
Russ Lanoie  
Joe Larue  
Maxine Lee  
Mike Levine  
Larry Leonard  
Nels Liljedahl  
Cheryl Littlefield  
Paul Littlefield  
Sean Littlefield  
Deb Maille  
Joe Manning  
Tracy Marnich  
Margaret Marshall  
Morgan Martin  
Dave Mason  
Jean Mason  
Kathy Moore

Lily Morgan  
Mike Nilan  
Vince Pelote  
Anne Peterson  
Karl Pfeil  
Sue Pfeil  
Carol Pierce  
Thomas Pitman  
Lee Pollock  
Cathy Poppenwimer  
Luke Quigley  
Warren Richardson  
Mark Ross-Parent  
Susan Ross-Parent  
Lynne Route  
Leslie Rowse  
Cathy Ryan  
Bob Santoro  
Dawson Santoro  
Merle Sciacca  
Angela Serrani  
Wendell Shaffer  
Mary Sheldon  
Terry Sheridan  
Ward Simonton  
Laurel Smith  
Peter Smith  
Carol Sleeper-Betz  
Donovan Spaulding  
Larissa Spaulding  
Bob Stevenson  
Dick Stewart  
Jaclyn Steinbacher  
Judy Swartz  
Marvin Swartz  
Mike Tamulis  
Chris Tanguay  
Tara Taylor  
Amy Thompson  
Lisa Thurston  
Johanna Vienneau  
June Waltz  
Miles Waltz  
Herm Weber  
Merle Weber  
Stephen Weeder  
Lisa White  
Jack Wolter  
Steve Woodcock  
Tom Workman  
Gail Zimmerman





# TIN MOUNTAIN PROGRAM DESCRIPTIONS

## SUMMER CAMP PROGRAMS

Tin Mountain Conservation Center has offered summer camp programs to children ages 4-16 for the past 31 years. *Kindercamp* and *Day Camp* are presented at facilities in four different locations for kids ages 4 to 9 years old. *Nature Theme Camps* integrate nature with art, geology, history and water for children 6-12 years. *Peaks and Paddles Intro* allows younger campers (ages 9-11 years) to gain confidence and acquire outdoor skills through day hikes a day of canoeing, and a one-night campout in the White Mountains. In *Canoe Voyageurs*, campers ages 11-12 learn canoe techniques with two days of canoeing followed by a three day trip to Lake Umbagog! Older children ages 13-16 years hike and camp the Presidential Range of the White Mountains in *Paths and Peaks*.



## OUTREACH PROGRAMS

2014 College Intern Program

**Young Mountaineers Club:** This weekly nature club directed by staff is designed for children in grade 1-4 students with a keen interest in nature and the outdoors. Each Saturday morning, Tin Mountaineers meet to explore different facets of the natural environment and make new friends with similar interests.

**Naturalist Certification Program:** Community members increase their understanding of the natural world while developing new skills to share as Certified Naturalists. Participants attend various Adult Nature Courses, Nature programs, special workshops, and completed an independent project to fulfill their certification by Tin Mountain.

**Tin Mountain Renewable Energy Initiative (TMREI):** This program was created in the fall of 2010 to address the need for solar energy in the Mount Washington Valley. Based on PAREI's model of neighbor-helping-neighbor community energy raisers in Plymouth, NH, our local organization relies on the power of volunteers to lower installation costs and strengthen community bonds.

**College Internship Program:** This is a valuable effort that enables Tin Mountain to expand its projects and program offerings while providing focused training and practical experience that is necessary for young professionals to enter the workplace with confidence. In addition, interns develop sustained relationships within the environmental and natural science community that provide the underpinnings of a lifelong network in their chosen field.

**Eco-Forum Lunch Series:** Diverse environmental issues are presented by outstanding speakers the second Thursday of the month sponsored by Flatbread Co of N Conway, Frontside Grind, and Old Village Bakery. The program is free and open to the public. Views expressed in the Eco-Forum are those of the speaker and not necessarily those of Tin Mountain.

## SCHOOL PROGRAMS

**Environmental Year:** Developed for elementary schools, a Tin Mountain teacher/naturalist visits the classroom for 34 weeks (51 hours) with a comprehensive set of activities and trips that teach basic principles of ecology and natural sciences. Concepts learned in class are applied to the field through numerous outdoor activities and trips. It is recognized as the backbone of our school programs because it allows our teacher/naturalists to work closely with the same students each week for the entire school year, providing in-depth instruction and curriculum support.

**Project KITE (Kids in the Environment):** A multi-disciplinary program for grades K-8, Project KITE was developed to support existing curricula by providing a special focus on the natural resources that sustain the economic and social underpinnings of the region. Working closely with teachers, Tin Mountain provides three presentations by a teacher/naturalist and a field trip on each unit, including forests, wildlife, wetlands and mountains.

**Maine Environmental Science Academy (MESA):** Tin Mountain staff spends one morning each week throughout the entire school year with students from grades 6, 7, and 8 at Molly Ockett Middle School in Fryeburg. This exceptional program is part of the school's effort to integrate writing, math, technology, cultural history, and the arts through classes focused on the natural science and the environment. Over the past three years, curricula have been developed around forest ecology, water and the environment, and wildlife and wildlife habitat. The program has received state-level recognition for outstanding academic results and community involvement by students.

**Extra Hours Program:** Teachers and Tin Mountain staff tailor programs to meet special needs of different schools. Examples include leading field trips, identifying special resources and materials, and conducting special projects such as recycling or river studies.

## COMMUNITY NATURE PROGRAM SERIES

Tin Mountain offers a variety of hands-on environmental education programs for adults and families of the Mt. Washington Valley area and western Maine. The Community Nature Program Series supported by L.L. Bean and the Evenor Armington Fund is a major vehicle for drawing families into the natural world, with thanks to lodging sponsor Residence Inn by Marriott, N Conway. Over 70 programs are offered throughout the year.

## ADULT NATURE COURSES

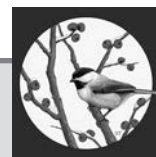
Tin Mountain *Adult Nature Courses* provide an in-depth look at various natural and cultural history topics. Individuals with all levels of experience are encouraged to enroll. All programs combine time in the classroom and lab with hands-on field studies and may include lectures, slideshows, group discussions, guest speakers, and selected readings.



1245 Bald Hill Road, Albany, NH 03818  
Facility and Grounds Rentals  
for Non-Profit & Private Functions



Mon-Fri 9-5 Sat 10-3



Become a Member of  
Tin Mountain Conservation Center  
on line at [www.tinmountain.org](http://www.tinmountain.org),  
or call 603-447-6991



Tin Mountain Conservation Center  
1245 Bald Hill Road  
Albany, NH 03818

**Tin Mountain Conservation Center**

[www.tinmountain.org](http://www.tinmountain.org) 603-447-6991 [info@tinmountain.org](mailto:info@tinmountain.org)



**Full Financial Report Available Upon Request**

*Photo Credit: Donna Marie Dolan*