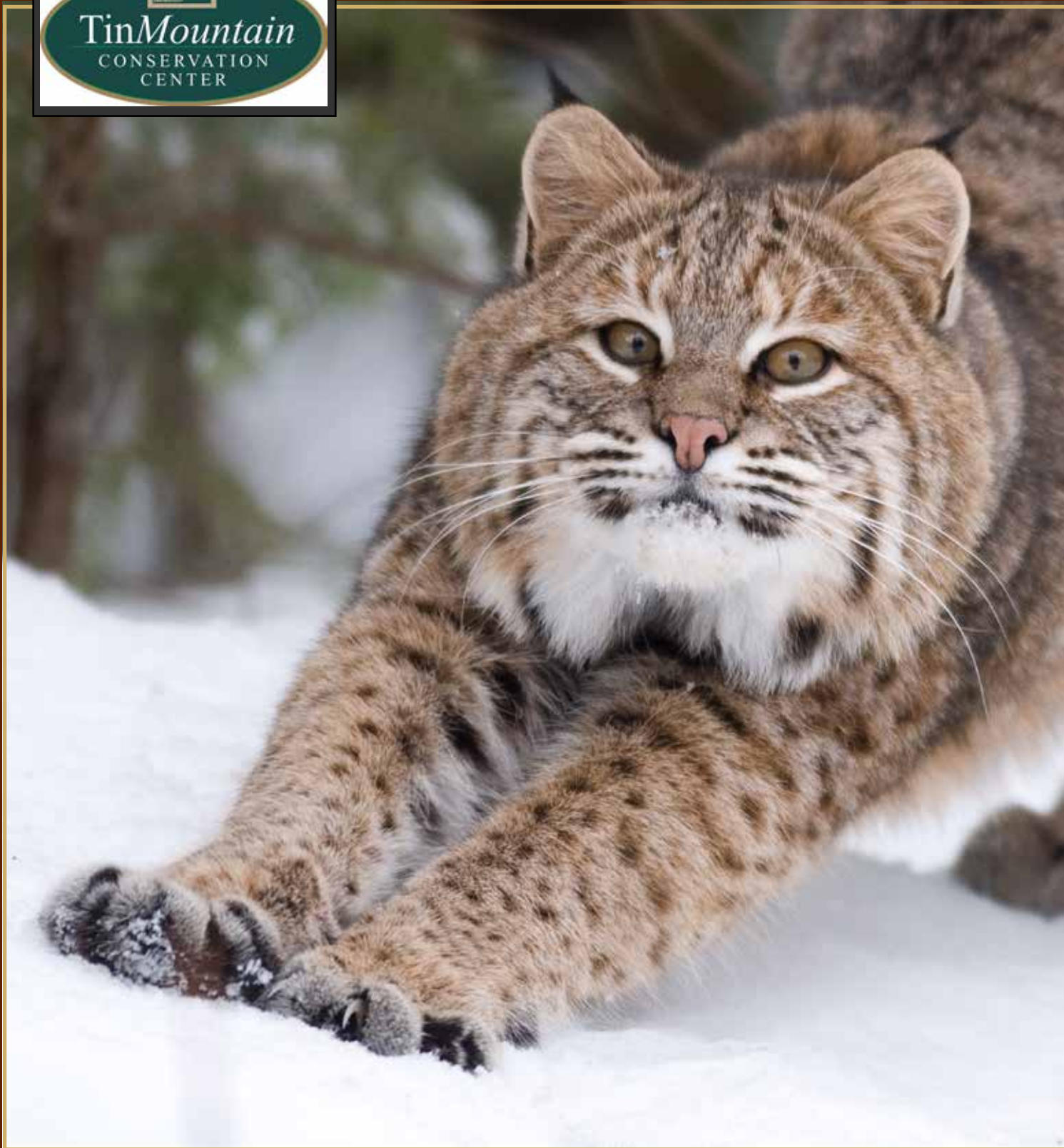


[www.tinmountain.org](http://www.tinmountain.org)



**ANNUAL REPORT**

**10/01/14-09/30/15**

# Annual Report

10/01/14-09/30/2015

## Staff

**Dr. Michael Cline**

*Executive Director*

**Lori Jean Kinsey**

*Education Director*

**Sean Ashe**

*Property Manager/Naturalist*

**Corrie Blodgett**

*Outreach Coordinator/Naturalist*

**Phaedra Demers**

*Teacher Naturalist*

**Donna Dolan**

*PR/Communications Manger*

**Nora Dufilho**

*Volunteer Coordinator/Naturalist*

**Carol Foord**

*Teacher/Naturalist*

**Richard Fortin**

*Trout Restoration Manager*

**Lily Morgan**

*Development Coordinator/Naturalist*

**Jotham Oliver**

*Event Coordinator*

**Nancy Simonton**

*Business Manager*

## Board of Trustees

**Linda Hastings, Chair**

**Peter Klose, Vice-Chair**

**Margaret Marshall, Treasurer**

**Judy Fowler, Secretary**

**Pat Heiges, Trustee at Large**

**Jeanette Almy**

**Tony Andreano**

**Megan Barry**

**Theresa Gallagher**

**Jen Hohenboken**

**Cheryl Keator**

**John Keator**

**Joe LaRue**

**Cheryl Littlefield**

**Sean Littlefield**

**Joe Manning**

**Tracy Marnich**

**Karl Pfeil**

**Rick Steber**

**Karen Travers Lynch**

*Honorary Trustee*

**Seth Rockwell**

## Summer Interns

**Sarah Fensore**

**Morgan Martin**

**Anne Mauro**

**Connor Rosenblatt**

**Tyler Thomas**

*Cover Photo: Roger Irwin*

# LETTER FROM THE CHAIR

*Dear members and friends,*

*There is a simple reason for Tin Mountain Conservation Center reaching out to thousands of children and adults each year with its mission of promoting an appreciation of the environment through hands-on programs in the greater Mt. Washington Valley. Our future depends largely on the care and wisdom with which we steward*

*our natural resources and that in turn depends on a clear understanding of the natural environment. That mission has guided Tin Mountain's efforts for the past 36 years, and it has been possible only because of the hard work of the Board of Trustees, the dedication of the staff, and the very supportive members that have placed confidence in the organization.*

*Tin Mountain school programs remain stronger than ever with classes presented in all of the schools in the greater Mt. Washington Valley including Berlin/Gorham and western Maine. Summer camp continues to run at capacity with new opportunities for kids to learn about the natural world. The Community Nature Program Series provided more presentations and field trips in the past year than ever before. The past year also saw the formation of the Tin Mountain Bird Society that has strengthened an already strong focus on bird conservation efforts and afforded many new bird field trips. The support the community showed for our fundraising events was stronger than ever.*

*It has been a good year for Tin Mountain, but one of the most exciting developments was the completion of the intern cabin that houses numerous research and teaching interns throughout the year. It is a beautiful post-and-beam structure that was built nearly entirely from wood harvested on Tin Mountain property and boasts a solar domestic hot water system. It will be an excellent home for summer interns for many years to come.*

*Next year promises to be just as exciting and challenging. I would like to thank all who have contributed so generously to Tin Mountain Conservation Center programs over the past year, and I encourage your continued participation with Tin Mountain in the coming year.*

*Since my term as chair is complete with the 2016 annual meeting, I would like to take this opportunity to thank the staff, trustees and members who have given so much to Tin Mountain during my two year term as chair. I especially want to thank those volunteers who give so much time week after week to help keep the organization running so smoothly.*

*Sincerely,*



*Linda Hastings*

Chair, Tin Mountain Board of Trustees



# DIRECTOR'S REPORT



*Dr. Michael Cline*

## DIRECTOR'S REPORT

Whether in school programs or outreach programs for adults and families, Tin Mountain stresses the interconnectedness of all things, be they organic or inorganic. The world is comprised of a vast network of systems that depend upon predictable outcomes from one another to continue functioning properly. As John Muir stated - When we try to pick out anything by itself, we find it hitched to everything else in the Universe. This is the central premise of our environmental education efforts, and that irrefutable logic underpins all efforts to be responsible stewards and to develop sustainable societies.

One might ask whether most people understand the interconnectedness of everything about them, and the cause and effect their actions have on these finely tuned systems. Today there are many examples of environmental degradation and unsustainable practices throughout the world. Is it a matter of people not knowing what they don't know, or perhaps they know better, but the responsible alternative is not convenient? Our best available science should be the final arbitrator; however, society has a love/hate relationship with science. Society loves positive medical and technology breakthroughs, but tends to shun or deny scientific data/results that shine a light on negative implications of preferred lifestyle choices.

Tin Mountain programs stress that interconnectedness within and among different systems can only be preserved if scientific facts drive decisions. Further, the sustainable path forward does not mean a diminution of quality of life, but instead, it represents an enriched quality of life in which value supersedes quantity. Regardless of how lightly each of us tries to tread on the earth, our actions tend to tug on those things that are hitched to everything else. Our challenge is to preserve and protect those bonds while living a meaningful life. We are all in this together.

## SCHOOL PROGRAMS

Tin Mountain school programs reached five local school districts and are an integral part of 17 schools serving nearly 5,000 students in the greater Mt. Washington Valley, the Berlin/Gorham area, and western Maine. Multiple classroom visits and field trips throughout the year greatly magnify the actual contact hours between naturalists and students. Tin Mountain's multi-session, comprehensive approach sets its programming apart from other school-based environmental education efforts. Teacher/naturalists devote classroom lessons and field trips to exploring the many rivers, ponds, forests, mountains, and special natural areas in the region. School programs at every grade level emphasize "hands-on" learning during all seasons of the year. Students have sustained contact with Tin Mountain naturalists throughout their entire school careers. All environmental learning programs are tailored to the individual curricula of participating schools.

A forward-thinking Conway School Board maintained Tin Mountain school programs in the three Conway elementary thanks to strong support from teachers, parents, and school administrators. Tin Mountain has been presenting programs in area schools for 25-30 years, and student and teachers find them to be a critical part of their classes. Since schools contribute only half the actual cost, these programs are an excellent value for communities. Additionally, Tin Mountain continued school programs in the Berlin and Gorham schools that have been presented for the last eight years.

Tin Mountain is an integral part of the Maine Environmental Science Academy (MESA) at Molly Ockett Middle School using a hands-on approach to teaching ecology. One day each week, students learned about water in the environment, the dynamics of forest succession, the common and scientific names for the native trees and how to identify them, forest soils, and much more. The hands-on nature of the classes was ideally suited to these students.

This was the fifth year that Tin Mountain taught a field-based Forest Ecology and Management course during May Term at the Fryeburg Academy. Modeled after college May terms, this innovative approach allows high school students to examine two or three specialized topics during a month-long intensive study term. This is a unique approach that infuses excitement for learning into the end of a long school year.

School field trips are opportunities to teach natural science and become familiar with the environment in students' own backyards, and teacher/naturalists adapt



lessons to incorporate trips to local natural areas and discuss historic land uses. Because the Board of Trustees is committed to providing quality environmental education programs at an affordable price, Tin Mountain school programs are offered at half the actual cost to present; the Board and staff fundraises to cover the remaining costs.

Tin Mountain programs don't stop at the end of the school day. Many local communities have well-established after-school programs in which Tin Mountain participates. It's a perfect time of day to explore the natural world. Many of the schools have terrific school yards replete with forests, fields, and trails, with views of Mt. Washington and other inspiring peaks, and even an occasional pond to explore. After school programs were presented to students through Project Succeed at Pine Tree, Conway, and John Fuller Elementary, the Mustang Academy in Madison, and Pequawket Kids at the Denmark, Snow, and New Suncook Elementary Schools.

## **NATURE LEARNING CENTER PROGRAMS**

The Community Nature Program Series presented over 70 programs attracting enthusiastic participants of all ages. L.L. Bean once again provided critical support in sponsoring the popular series that reached over 1,200 people this past year and offered numerous opportunities for hands-on learning about the natural world of northern New England. Participants enjoyed canoeing Lake Umbagog and the Magalloway River, hiking above the Notches in search of the black-backed woodpecker and to Humphrey's Ledge for spring wildflowers, visiting enriched cove forests at Moose Brook, hawk-watching on Little Round Top Mountain and Hacker Hill, as well as many other trips and presentations. A special Family Nature Program Series is designed specifically for families with children.

Tin Mountain Adult Nature Courses present an in-depth examination of various natural and cultural history topics including dry stone wall building, dendrology, vernal pools, and animal tracking. The Eco-Forum Lunchtime Lecture Series provides provocative monthly presentations by noted experts on a wide variety of issues from Fish population and Water Quality in NH

to Black Bear Management in NH that guarantee to stir debate. The Featured Nature Artists program is a revolving monthly exhibit of local nature artists presented in the lobby of the Nature Learning Center. This year we have hosted exhibits of photography, painting, and felting to name a few. The venue has attracted the best talent in the area, and evening art show openings are highly anticipated events.

The Tin Mountain Naturalist Certification Program (NCP) has attracted over 30 naturalists who are working towards certification. Certification provides recognition for achieving proficiency in several key natural science categories through coursework and independent study. Three participants completed the program course work and their independent projects thus far. It is ideal for residents of the Mt. Washington Valley given the area's emphasis on recreational activities and opportunities to disseminate its natural history to visitors. To complete the program, naturalists attend over 50 hours of programming culminating with an independent project that exhibits an understanding of natural history and the ability to share that knowledge with others.

## **NATURE CAMPS**

Tin Mountain camp programs reach nearly 250 local children and families each year. Nature summer camps attract children ages 4 to 16 to camp locations in Fryeburg, ME, Jackson, Albany, and South Tamworth, NH. Participants learn firsthand about the local natural environment through hands-on outdoor exploration, all under the guidance of trained naturalists and camp staff. Younger children attend day camp while a variety of weeklong adventures to wild areas in northern New England are offered to the older age groups. Winter Camp provided an opportunity for children to spend their school break outside learning and having fun in the snow.

True to its commitment to providing high-quality environmental education at an affordable price, Tin Mountain provides financial aid to many local families that would otherwise have great difficulty sending their children to summer nature camps. Nearly one-quarter of all campers received scholarships in 2014/15 amounting to \$8,799.

## **OTHER COMMUNITY PROGRAMS**

Tin Mountain continues to present summer programs throughout the Mt. Washington Valley. It was the 14th year that Tin Mountain has presented summer programs at the Wildcat Mountain Ski Area. These programs continue to draw strong attendance and interest from guests to the greater Mt. Washington Valley, and they provide natural history about the region that enriches the experience of visitors.

Tin Mountain's 18th Annual Meeting Festival was held in May at the Nature Learning Center in Albany and featured several fantastic field trips, an excellent presentation by Executive Director Michael Cline on 250 Years of Natural History in the White Mountains, great food, and much more. This event also is an opportunity for Tin Mountain to recognize individuals who have

made significant contributions during the past year. This year the organization's Distinguished Service Award was presented to Dick Stewart, Volunteer of the Year to Marvin and Judy Swartz, Exemplary Employee Award to Nancy Simonton, and Outstanding Environmental Educator to Maine Environmental Science Academy of Molly Ockett Middle School. The Business Partner Award recognized Hill's Florist and Nursery for its generous support, and the Trustees' Exemplary Service Award was presented to Margaret Marshall.

## **VOLUNTEERISM**

Supplementing its talented staff, Tin Mountain benefits from a committed and enthusiastic complement of volunteers. Over 3,500 hours were logged by volunteers at programs that help to promote Tin Mountain's objectives and vision within the Valley and assist in the fundraising that is essential to continue environmental education programming. Programs include: Fryeburg Fair Display, the First Season Auction, Mt. Washington Century Bicycle Ride, and Mt. Washington Auto Road Bicycle Hillclimb. Many additional volunteer hours were generously donated to library support, trail construction/maintenance, recycling, stone wall construction, murals, and much more. Tin Mountain could not manage without members like these.

## **SPECIAL EVENTS**

The Mt. Washington Auto Road Bicycle Hillclimb is the toughest in the world, and the 2015, 43<sup>rd</sup> Hillclimb provided financial support for the organization's work. Special thanks are extended to the Mt Washington Auto Road for its continued partnership. Most years, the changeable weather on the summit varies from clear skies to wind, rain, and sleet over the course of the race, but for the fifth year in a row, the weather was reasonable. Riders who expected the typical natural challenges on the "Rockpile" were relieved more than disappointed.

The 14th annual Mt. Washington Century Ride was especially successful in 2015 and also raised significant support for Tin Mountain programs. The ride starts and ends at the Tin Mountain Nature Learning Center in Albany. The 100 plus mile course takes riders around Mt. Washington, climbs over three notches, and through some of the most beautiful land on earth. This year the Century attracted nearly 250 registrants from all around New England and beyond.

The 29th Annual First Season Festival Benefit Dinner/Auction was held at the Fryeburg Academy Fieldhouse. It involved over 400 local businesses and individuals who generously donated articles to be auctioned. In addition, Business Sponsors provided critical support for the event. The majority of the Business Sponsors have been supporting Tin Mountain programs for many years, and again we are grateful for their ongoing support. Over 400 people attend the festival enjoying fantastic food and fine quality auction items.

The Fryeburg Fair display of Birds of Prey featured an elaborate field & forest design with numerous mounted birds, dozens of native wildlife species, and a scavenger hunt for children. The Fair afforded yet another opportunity to spread the word

about the Tin Mountain mission and to provide a learning experience for many fairgoers. The exhibit was staffed by TMCC staff and volunteers.

## **NATURE LEARNING CENTER ROCKWELL SANCTUARY**

During the harsh 2014-15 winter, the Nature Learning Center used about 3.0 cords of wood as backup to the solar thermal collectors in supplying heat for the entire 8,500 sq ft building. The photovoltaic (PV) system supplied most of the electrical demands of the center and the new intern cabin. The PV array at the Center generates 14,000 kWh and uses 16,000 kWh. Interest in the technology continues to draw much interest and many tours. The Tin Mountain Renewable Energy Initiative (TMREI) continues to provide hands-on assistance to individuals installing solar thermal systems. Modeled on neighbor-helping-neighbor, the old fashioned barn-raising philosophy is employed to install solar applications for individuals in the community.

Facility rentals were successful during the past year. Tin Mountain Conservation Center offers the ideal setting for a green wedding with its energy-efficient Nature Center and beautiful Rockwell Sanctuary. From the Nature Center's net-zero carbon footprint to planting wedding flowers and recycling wedding leftovers, Tin Mountain can be a great sustainable partner in planning any eco-wedding.

Volunteers were busy with numerous projects on the Rockwell Sanctuary. Their hard work maintained the entire trail network, cut and split many cords of firewood, tended the gardens, sawed lumber, completed the survey of over 30 nest boxes, helped complete another stonewall, and accomplished countless tasks around the Center. On the Jackson property on Tin Mountain, a generous grant allowed numerous volunteers to clear fields, repair trails, build rock steps, and construct bridges over streams and wet areas.

The intern cabin was completed in the spring and housed summer interns for the field season. The cabin used wood cut from Tin Mountain property to construct the modest post-and-beam structure to house the 3-5 college interns each year and any guests that may need over-night accommodations. The building project offered numerous workshops for those interested in learning green construction techniques.

## **MEMBERSHIP**

The best barometer of successful Tin Mountain programming is membership and the Annual Fund Drive. Over the past year, Tin Mountain membership has continued to grow, and the Trustees and staff have redoubled their efforts to attract new members to the organization by providing tangible reasons for members to sustain their membership. The Rockwell Society is a sustaining membership alternative that automatically pays a pre-determined membership level in secure monthly installments from a member's account. In addition, the new membership webpage provides easy ways

to become members and to donate to the different programs at Tin Mountain.

Yearly gifts, whether membership or annual fund donations, continue to provide essential support for environmental programs in schools, at summer camps and within the community. Long-term strategies can help sustain Tin Mountain programs into the future through Estate Planning, Charitable Remainder Trusts, or Charitable Lead Trusts. Call Executive Director Michael Cline for more details.

## TIN MOUNTAIN TIMBERLANDS

The sixth timber harvest of about 40 acres on Tin Mountain Conservation Center's 1,200-acre timberlands in East Conway occurred in winter 2014-2015. This harvest was conducted with a cut-to-length system using a timber processor and forwarder. The harvest provided funds for programming and an opportunity to lead by example by demonstrating responsible land stewardship. Tin Mountain manages these lands in a responsible manner adhering to sustainable forest practices. The goals for owning the lands are twofold: 1) to demonstrate sustainable forestry methods that provide both high-quality wood products and essential forest habitats and 2) to provide an additional revenue stream to help fund environmental education programs.



*Tin Mountain is awarded funds under a partnership agreement with Natural Resources Conservation Services (NRCS) and the United States Department of Agriculture (USDA).*



*Tin Mountain teacher/naturalist, Carol Foord is honored as the Environmental Educator of the Year by the NH Environmental Educators Association (NHEEA).*



## Suzy Engler Camp Scholarship Fund

The Tin Mountain Conservation Center provided children with scholarships to attend summer camp programs this past year through their Suzy Engler Scholarship Fund. The Fund honors the late Suzy Engler. Suzy was the Administrative Assistant at Tin Mountain for many years and was especially interested in providing children with "hands-on" nature camp experiences.

## Planned Giving Opportunities

**Bequests:** Bequests must satisfy personal and family obligations first; however, donors may also include Tin Mountain in their estate planning. Making Tin Mountain a beneficiary helps ensure that Tin Mountain's work will continue in future years while reducing estate taxes.

**Charitable Remainder Trusts:** Remainder trusts allow donors to transfer assets like stock to a trust and still retain its income for life. Ultimately, the assets become TMCC's, allowing the donor to keep an asset's income, avoid capital gains tax on its sale, take an income tax deduction, and make a commitment to TMCC's future.

**Charitable Lead Trust:** Lead trusts allow donors to keep assets while giving Tin Mountain their income for a specified period of time. Donors receive an immediate gift tax deduction for the full present value of the asset. This is a good way to pass assets on to heirs at full value while supporting Tin Mountain.

*For more information on the Suzy Fund endowment, or planned giving options, contact Executive Director, Michael Cline at (603) 447-6991 or write to him at 1245 Bald Hill Road, Albany, NH 03818. Tin Mountain also happily accepts and liquidates gifts of stocks and bonds.*

## Endowment Fund

Tin Mountain Conservation Center maintains an endowment as a designated fund with the New Hampshire Charitable Foundation (NHCF) in Concord. The NHCF invests and manages the \$484,635 principal making an annual distribution to Tin Mountain from the earned interest based upon pre-determined calculations that ensure a certain level of growth in the designated fund. In fiscal year 10/01/14-9/30/15, the interest distribution to Tin Mountain's general operations was \$19,863. The NHCF's Combined Investment Fund is recognized as one of the most secure places for a nonprofit to build an endowment.

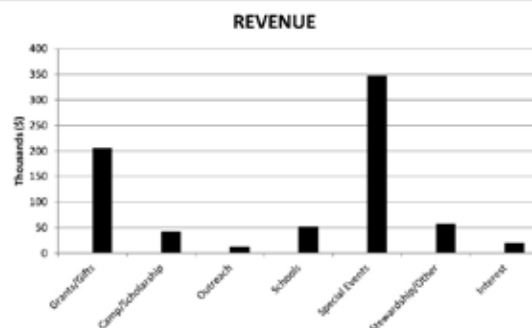
# FINANCIAL STATEMENT

October 1, 2014 - September 30, 2015

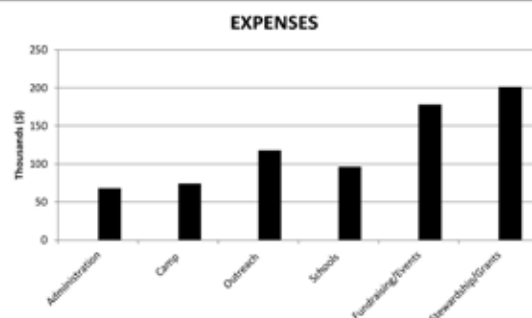
(With comparative totals for Oct. 1, 2013 through Sept. 30, 2014)

Statement of Financial Position as of	09/30/14	09/30/13
<b>Assets:</b>		
Capital Reserve	\$ 35,970	\$ 57,470
Cash & Equivalents	\$ 114,810	\$ 107,611
Accounts Receivable	\$ 1,150	\$ 3,053
Pledges Receivable	\$ 1,031	\$ 6,631
Inventories, Undeposited Funds, Other	\$ 3,336	\$ 4,066
Property & Equipment (net of depreciation)	\$ 2,389,998	\$ 2,409,953
Investment Fund (NH Charitable Fndn.)	\$ 484,635	\$ 524,439
<b>Total Assets:</b>	<b>\$ 3,030,930</b>	<b>\$ 3,113,223</b>
<b>Liabilities:</b>		
Accounts Payable & Accrued Expenses	\$ 17,236	\$ 8,952
Mortgage	\$ 219,781	\$ 228,730
<b>Total Liabilities</b>	<b>\$ 237,017</b>	<b>\$ 237,682</b>
<b>Net Assets:</b>		
Unrestricted General Fund, Equip. & Prop.	\$ 2,197,884	\$ 2,269,884
Temporarily Restricted	\$ 111,394	\$ 81,218
Permanently Restricted	\$ 484,635	\$ 524,439
<b>Total Net Assets:</b>	<b>\$ 2,793,913</b>	<b>\$ 2,875,541</b>
<b>Total Liabilities &amp; Net Assets:</b>	<b>\$ 3,030,930</b>	<b>\$ 3,113,223</b>
<b>Statement of Activities</b>	<b>10/1/14-9/30/15</b>	<b>10/1/13-9/30/14</b>
<b>Revenue and Support:</b>		
Grants, Gifts, Donations, Membership	\$ 205,634	\$ 192,519
Camp Revenue & Scholarship	\$ 42,724	\$ 43,997
Community Outreach Programs	\$ 12,899	\$ 15,363
School Program Support	\$ 52,125	\$ 36,460
Special Events & Misc. Fund Raisers	\$ 347,812	\$ 375,706
Stewardship, Rental, Store & Other	\$ 57,689	\$ 22,085
Interest (including NH Charitable Fndn.)	\$ 20,381	\$ 17,989
<b>Total Revenue and Support:</b>	<b>\$ 739,264</b>	<b>\$ 704,119</b>
<b>Expenses:</b>		
Administration	\$ 67,786	\$ 72,125
Fundraising & Special Events	\$ 178,012	\$ 183,531
Community Outreach Programs	\$ 117,925	\$ 108,264
School Programs	\$ 96,469	\$ 80,391
Summer Camp Programs	\$ 74,202	\$ 68,088
Stewardship, Grant Projects, Other	\$ 201,235	\$ 163,433
Temp. Restricted funds released for Projects	\$ (50,729)	\$ (41,730)
Depreciation	\$ 63,652	\$ 61,224
<b>Total Expenses:</b>	<b>\$ 748,552</b>	<b>\$ 695,326</b>
<b>Excess/deficit of revenue over expenses:</b>	<b>\$ (9,288)</b>	<b>\$ 8,793</b>
<b>Other Activities:</b>		
Cabin Project Expenses	\$ 43,502	\$ 131,487
Capital Reserve Transfer	\$ 10,000	\$ 10,000
Loan Principal Payments	\$ 8,946	\$ 8,570
Railings (fy 13-14)	\$ -	\$ 5,523
<b>Total Other Activities:</b>	<b>\$ 62,448</b>	<b>\$ 155,580</b>

## REVENUE



## EXPENSES



**Full Financial Report  
Available on Request**



**BECOME A MEMBER ONLINE**  
**TINMOUNTAIN.ORG**

# TIN MOUNTAIN CONSERVATION CENTER CONTRIBUTORS

## LIFE TIME MEMBERS

Joe & Judy Burgess  
Thomas O. Currier  
Stuart Feldman  
Judy Fowler  
William Lee  
Bob Santoro  
Tara Taylor  
Enya Taylor-Currier

## MEMBERS & ANNUAL DONORS

Mary Ann C. Abrams  
Mark & Ingrid Albee  
Doug & Paula Albert  
Allan Aldrich Jr. & Linda Comeau  
Albert Alex  
Joyce & G. Huntley Allan  
Jeanette & William Almy  
Alvin J. Coleman & Son Inc.  
AMICA Insurance Co.  
Anthony & Ellen Andreano  
Roy & Duddie Andrews  
Jeremy Angell  
Anna Stickney Chapter D.A.R.  
David & Rosemary Armington  
Alison C. Arthur  
Peter Atwood  
Deborah Ayers  
Angus Badger & Rachel Vose  
Richard & Mary Badger  
Joe Bagshaw & Melinda Coyle  
Judith Bailey & Stephen Oppenheim  
D. William Baird  
Dean & Gayle Baker  
Lori & Frank Balantic  
Carlene Bane  
F. Michael Bannon  
Kristen, Bill & Quinn Barbin  
Patricia Barker  
Stephanie Barnes & Barbara Fortune  
William S. Barrett  
Barry Family  
Cindy Barstow  
Martin & Janet Basch  
Battenfelder Family  
Donald & Cynthia Bean  
Susan Beane & Peter Smith  
Theresa Beckett & Matt Krug  
Sherri Belfus  
Martha & Frank Benesh  
Ann & Richard Bennett  
Peter & Emily Benson & Family  
Kathleen & H. Edmund Bergeron  
Gene & Sue Bergoffen  
Mary Jane Bernstein  
Katrine Biddle & Frank Mann  
Waltraud Bihn  
Cheryl Bildner  
Jocelyn Billin  
Philip & Joan C. Bilodeau  
Paul Birk  
George & Ginny Bishop  
Ed & Karyl Bisson  
Linda Blais  
Steven Blais  
Robert & Elaine Boissevain  
Susan Bonard-Bygrave  
Brad Borden  
Ezra, Christina, Oh & Arrow Boucher  
Paul & Claire Bouffard  
Mrs. Richard Brackett  
Lynn Bradbury & Jenna & Rebecca Isaacson  
Betsy Bradt  
Richard & Norma Briana  
Richard Brisbois  
Eileen & Bill Brochu  
E. Allen & Joanne Brooks  
Leann Brown & Chris Muzerall  
Richard & Constance Brown  
Theodore Brown  
John Bruni & Dale D Warren  
Joyce Bryant & Patricia McFarlane  
Thaire & Deborah Bryant  
Andrew & Alison Burke  
Ryan & Stacey Burke  
Douglas & Kathryn Burnell

Lindsay & Ryan Bushnell  
Charles & Marilyn Butler  
Dick & Nancy Byrd  
Cabin Fever Restaurant  
Barbara Campbell  
Vicki & John Cannell  
Dorilda Card  
Calvin & Cindy Carpenter  
Jerry & Del Carrier  
Roger M. Carrier  
Carroll County Altrusa Foundation  
Shelley, Jonathan & Willow Carter  
William F. & Kathleen Casey Jr.  
Scott Cecil & Eleanor Pansar  
Anne Chace  
Chandel Associates P.A.  
Jeanne & John Chanley  
William & Elizabeth Chapin  
Ann Chase  
Christopher P. Williams Architects  
Kevin Clark & Family  
Rick & Julie Coffin  
Gary E. Cole, O.D.  
Susan Cole  
T. Jewell Collins  
Susan Colten  
Peggy S. Conlin  
David Cormier  
Country Cabinets  
Peter Crane & Holly Huhn  
Todd & Liesel Crane  
Ronald Cranshaw & Rosemary Gerbutavich  
Laura Cronin  
Robert & Susan Crowley  
John & Linda Cryan Family  
Laura Cummings  
Philip Curtis  
Kate & Bruce Curtis-McLane  
Marilyn D'Aquanni  
Kim & Chris Darby  
Rheba & Albert Davidson  
Peter K. Davis  
Heather & David Day  
Luke & Rebecca Day  
Thomas & Dorcas Deans  
Degliangeli Family  
Jessica & Joe DellaValla  
Linda Denis  
Carol & William Denning  
Richard & Gloria Dennison  
Dr. Robert F. Denoncourt  
Vinette & Glenn DiGregorio-Barnes  
Matthew DiMaio  
Larry & Cathy Donoghue  
David & Barbara Douglass  
Noreen & Dave Downs  
Linda & Hank Dresch  
Rebecca Drewette-Card  
James & Jean Drummond  
Roland & Bette DuBois  
Drew Duckworth  
Jackie & Eric Dziedzic  
Thomas C. & Ruth Earle  
Sarah Eastman  
Mary Jane Elwell  
Emsbo-Mattingly Family  
H. David Evans  
Dawn Farnham  
Stuart Feldman  
Charles & Margaret Felton  
Richard & Anne Ficke  
Kim T. Field  
Ralph & Sally Fiore  
Patricia Fleck  
Gay Folland  
William & Carol Foord  
Henry Forrest  
Susan Fortier  
Richard & Holly Fortin  
Colleen Curran & Maxwell Foster Jr.  
Betsy & Brian Fowler  
Judith Fowler  
Brian Fox  
Karen Franke  
Sarah & Alec Frankel  
Frase Electric  
Patricia Freysinger

Albert G. & Jeanette D. Friend  
Anne & Stephen Frost  
Phil & Sue Fuller  
Rebecca & Brad Fuller  
Joy & Gary Gagnon  
Paul & Terry Gagnon  
Theresa Ann & James F. Gallagher  
Stephen Gallas  
Joseph Gallucci  
Anne Garland & Joanne Clarey  
Larry Garland  
Gregory Garrick  
Timothy Garrison  
Glasshart Family  
Dale & Pat Goodwin  
Jon & Kimberly Goodwin  
Joseph & Phyllis Gorman  
David Govatski  
Marya & David Grant & Family  
Linda Gray & David Gotjen  
Meghan & Patrick Gray Jr.  
Steve Gray  
Jack & Regina Greely  
Philip Green  
Mark Gueringue  
Gail A. Guittarr  
Frank Gutmann  
Jennifer & Shawn Hagerty  
Donald & Wilhemine Hall  
Susannah Halpern  
David A. Hamel  
Susan Hamlin & Bob Mead  
Charles & Maureen Hanlon  
Tish Hanlon & Stephen Weeder  
Dexter Harding & Lucy Gatchell  
Sam & Betsey Harding  
Georgette & Joel Hardman  
Constance Harmon  
Russell T. & Lynne Hart  
David & Carol Hastings  
James & Linda Hastings  
Peter & Stefi Hastings  
Deborah Hatch  
Dr. Stuart T & Barbara B. Hauser  
Ross L. Heald  
Pat & Bob Heiges  
Carolyn K. Hemingway  
Wayne & Erin Hennessy  
Paul & Elaine Hennigan  
Kimberly Henry  
Charlene & Ronald Hibbs  
Patricia & John Higgins  
Beth & Norm Hildreth  
John & Patricia Hoffman  
Jen & Matt Hohenboken  
Frank & Barbara Holmes  
Charles F. & Maureen Houghton  
Janice Houghton  
Harrison & Barbara Hoyt  
Hunting Dearborn Division  
Scott Hutchins  
Irene & Joe Jacintho  
Michael & Kara Jacobs  
Laura Jawitz & Gordon Cormack  
Eleanor Jenkins  
Vickie & Rick Jenkinson  
Valerie & David Jensen  
Scott Johnson & Amy Montgomery  
Mark & Natalya Johnson  
Sally Johnson  
Anna & Brian Johnston  
Eleanor & Michael Kahn  
Nina & Jonas Kahn  
Teri & Stefan Karnopp & Family  
Robert Katz  
Cheryl & John Keator  
Nancy Keaveney  
Walt & Cathie Keirans  
Daryl Kenison  
Judy & Dan Kennedy  
Kenneth & Sarah Kimball  
Richard Klausner  
Peter & Elaine Klose  
William & Yvonne Klotz  
Jerry Knirk & Cam Spence  
Joseph & Fannie Knowles  
Michael D. Kracht

Ted & Carol Kramer  
John & Leslie Kremer III  
Kringle's Country Store  
Thomas Kugel  
Paul & Laura Kuleszka  
Dan & Rachel Kusch  
Shar La Porte  
Bill & Lucy LaCasse  
Tim Lafayette  
Jennifer E. Lain  
Liz & Scott Lajoie  
Russell & Joan Lanoie  
Joe LaRue  
Jeff Lathrop  
Laurie Campanelli & Family  
Ed & Marlene Lawton  
Teresa & Frederick Leach  
Brenda & Rich Leavitt  
George LeBlanc  
William Lee  
Richard & Eileen Lennon  
Michael & Marilyn Levine  
Diana Levy  
Jim & Claire Lewkowicz  
S E Licardi  
Donna M. Lietz  
Cheryl & Paul Littlefield  
Sean & Mary Littlefield  
Scott & Deborah Livingston  
Christopher Logan  
Eugene Long  
Oscar W. Look IV  
Catherine M. Lovequist  
Chester & Lydia Lucy  
Roy Lundquist  
Michael Lutjen & Marcia Scogin  
Mike & Karen Travers Lynch  
Gary & Karen MacDonald  
Eileen Macedo  
Joan MacPhail  
Marni Madnick & Robert Schor  
Linda & Scott Mahler  
Maine Dry Stone  
Katie & Peter Malia  
Manero Family  
Gordon Mann  
Judith Manna-Burgess  
Manning Family  
Maple Leaf Motel  
Tracy Marnich  
Margaret & Sut Marshall  
Debra B. Martin  
David & Jeanne Mason  
Pam & Phil Mason  
John & Barbara Matsinger  
David Maudsley  
Joe & Daryl Mazzaglia  
Robert McConaghy  
McIndoe Family  
Braden McKenzie & Virginia Ward  
Kenneth & Linda McKenzie  
Judith A. Meagher  
Cynthia A. Melendy  
Memorial Hospital Maine Health  
Memorial Hospital Volunteers  
John & Catherine Mersfelder  
Kathleen & Robert Metz  
Richard & Robin Lurie Meyerkopf  
Arthur & Beverly Micallef  
Jack B. Middleton  
Catherine & Christopher Milton  
Charles & Pamela Monaghan  
Virginia Monnes  
Ann & Murdock Montague  
Cynthia Morgan  
Nancy Lee Morrell  
Nancy Morrison  
Morse Family  
Mountain Garden Club  
Becky Mulkern  
Joyce Munise  
Bob & Jean Murphy  
Francis Murphy  
Nancy V. Murphy  
Native Orchid Conference Inc.  
Eileen T. Neville  
George Neville

# TMCC CONTRIBUTORS

John Newton  
Janice & Steve Nichipor  
Charlie Nims & Sheila McCarthy  
Northeastern Lumber Mfr. Assoc.  
Daniel Oberlander  
Brenda O'Brien  
Grace & Thomas O'Connor  
Leslie O'Dell &  
Bryan & John Beckwith  
Donald & Marilyn Olivier  
Daniel F. O'Neill  
A. Neill Osgood  
Jim & Donna Osgood  
Tedd Osgood  
Fran O'Shea  
Daniel & Jeanne Ouellette  
Our Lady Of The Mountains Church  
Lisa & Paul Paglierani  
David Paige & William Abbot  
Gail Paine  
Priscilla Parent  
Karen & David Parker  
Jeff Paul  
Kristopher Paulsen  
John & Alice Pepper  
Anne Peterson  
John A. Peterson  
Karl & Susan Pfeil  
Frederick Piehl  
Carol Pierce  
Pillion Champlin Family  
Mantie Pilzer & Family  
Paul & Connie Pinkham  
Richard Plusch  
Lee & Sylvia Pollock  
Alix & Bob Pratt  
Jean & Bill Preis  
Francesca Priestman  
Buzz & Jane Query  
Robert Quindazzi  
Richard Quint  
R&R Woodworkers  
Jay & Robbin Rancourt  
Kenneth & Jane Rancourt  
Ted & Judy Raymond  
Eileen & Joe Redmond  
Mary Lou Remon  
Richard H. Reuper  
Curt & Jill V. Reynolds  
Wendy Rigazio  
Tabitha & Rob Riley  
David & Emilie Riss  
River Run Company  
Frank Robey  
Aimee & Owen Robertson  
Gael Rockwell & Ty Minton  
Lynn Rockwell & Roman Kokodyniak  
Martha Rockwell  
Ned & Liza Rogerson  
Jason Roth & Cheryl Steadman-Roth  
Ron Routhier & Patricia Murphy  
Anthony Ruddy & Lisa Baumgartner  
Arlene Russell  
Brett & Cindy Russell  
Elbridge & Linda Russell  
Saco Valley Gem & Mineral Club  
Glenn & Sonnhilde Saunders  
Leslie & Warren Schomaker  
Diane M. Schuette  
Joseph & Diane Scott  
Frank & Elizabeth Seabury  
David & Judith Seddon  
Jon Seliger  
Mary Ellen Shea  
Teresa Sheridan  
Melanie Sherlock & Family  
Dix Shevalier & Laurie Gilmour  
Robert A Silvestre  
Rick Simmons & Carol Mancinelli  
Paul J. Simon  
William Simonds  
Jennifer Simone  
Barbara & Frederick Slader  
Lyn Slanetz  
Peter B. Smith  
David & Diane Smith  
Laurel Smith & Kevin Donohoe

Linda Drew & Noel Smith  
Betty Snyder  
Quddus Snyder  
Dr. Faye D. & W. Donald Soderberg  
Doug & Kathy Somerville  
David Sordi  
Darlene & Warren Spence  
Connie & Bob St. Pierre & Family  
James & Wendy St. Pierre Family  
Rick & Jean Steber  
Susan Steller  
Linda Stetson  
Allen & Lynn Stevens  
Diana Stevenson  
Kathy & Dick Stewart  
Theo & Melanie Stibbons  
Eleanor & Emery Stokes  
Robert & Suzanne Birdsall Stone  
William & Sally Stoops  
Story Land  
Marc & Sue Stowbridge  
Roberta Sullivan  
Marvin & Judy Swartz  
Jean Sweeney  
Kathleen Sweeney  
Stephen S. & Sally S. Swenson  
Imre & Deborah Szauder  
Joe & Michelle Szympruch & Family  
E. Richmond & Sue Talbot  
Tamarack Construction Company  
Mike Tamulis  
Dr. & Mrs. Charles Taylor  
Tara & T.O. Currier Taylor  
Bob Teichman  
Brad & Bee Thayer  
Mary Judge Thayer  
The Oedel Family  
The Ryan Family  
The Sandahl Family  
The Wentworth Hotel  
Brenda & Don Thibodeau  
Barb & Charlie Thomas  
Beth & Kim Thomas  
Katharine Thompson  
Jean Macomber Thompson  
Richard & Beth Thompson-Tucker  
Ruth G. Timchak  
Miriam Tod  
Jotham Trafton  
Richard & Barbara Trafton  
Unitarian Universalist Fellowship  
of The Eastern Slopes  
Rick Van de Poll  
Johanna & Dennis Vienneau  
Arthur & Carol Viens  
Jennifer Viger  
Marianne Voci  
Don & MaryLou Waite  
Hilary Wallis  
Miles & June Waltz  
Barry & Bonnie Ward  
John, Leona & Ayannah Ward  
Richard A. Ware  
Harvey Weener  
Howie & Sue Wemyss  
George & Laurie Weston  
Paul & Joan Whetton  
White Family  
White Mountain Milers  
White Mountain Oil  
Jeff White & Joyce Peseroff  
Jennifer Hocking Wiley  
Christopher & Ann Williams  
Kate & Peter Willis  
Judith Wilson  
Steve & Maureen Wilson  
Lisa Wing & Family  
William Wogisch  
Michael Wolfson  
Jack Wolter  
David F. Wood  
Denise & Steve Woodcock  
Thomas & Judy Workman  
Christine Wray & John Felicitas  
Lesley Wright & Don Doe  
Ted & Sharon Wroblewski  
Moira Yip

Shirley Young  
Arlene & Charlie Zaccaria  
Peter Jr. & Margaret Zack  
James, Jane & Cathy Zavistoski  
Ellen & Andrew Zelman

## CABIN CAMPAIGN

Anonymous Donor  
Susan Beane & Peter Smith  
Cabin Fever Restaurant  
Dick & Holly Fortin  
Judith Fowler  
James & Linda Hastings  
Cheryl & Paul Littlefield  
Sean & Mary Littlefield  
Marriott Foundation  
David & Beth Sturdevant





Explorer Camps Ages 9-16

Nature Nuts Ages 4-10



## Camp Brochure

LL Bean  
Ragged Mountain Equipment  
Saco Bound, Inc



## Camp Staff

Lori Jean Kinsey, Director  
Corrie Blodgett  
Kelly DeVries  
Katherine Doyle  
Molly Doyle  
Sarah Frankel  
Calvin LaPorte  
Lily Morgan  
Jotham Oliver  
Camille Rohde  
Dawson Santoro  
Larissa Spaulding

## Camp Scholarships

Roy & Duddie Andrews  
Dean & Gayle Baker  
Patricia Barker  
Emily & Peter Benson  
Bushee Thorn Mountain Trust  
Carroll County Altrusa Foundation  
Eaton Conservation Commission  
Mary Jane Elwell  
Gay Folland  
Mark Guerrinque  
Pat & Bob Heiges  
Jen & Matt Hohenboken  
Valerie & David Jensen  
Kezar Lake Watershed Association  
Kiwanis Club of Mount Washington Valley  
David & Jeanne Mason  
Bob & Jean Murphy  
George Neville  
Charlie Nims  
Diane & Joseph Scott  
Kathy & Dick Stewart  
Joe & Michelle Szympruch & Family  
Tamworth Brett School  
Tara Taylor & TO Currier  
Howie & Sue Wemyss  
White Mountain Community Health Center  
Arlene & Charlie Zaccaria

## COLLEGE SCHOLARSHIP

Stephanie Barnes & Barbara Fortune  
Ann & Richard Bennett  
Emily & Peter Benson  
George Bishop  
Flatbread Co. North Conway  
Paul & Elaine Hennigan  
Cheryl & Paul Littlefield  
Theresa Gallagher  
Cynthia Melendy  
Mt. Washington Lodge of Free Masons  
MWV Calendar for Charity  
White Mountain Milers



# GRANTS AND RESTRICTED GIFTS

## AFTER SCHOOL PROGRAM

Gibson/Woodbury Charitable Foundation

## CABIN BUILDING PROJECT

Marriott Foundation

## COMMUNITY PROGRAMS

LL Bean, Inc.

## FOREST VISION BOOK

New Hampshire Charitable Foundation

## GENERAL SUPPORT

Buzz Coleman

Marriott Foundation

Mountain Garden Club

Story Land

The Jackson Church

The Wentworth Resort

Unitarian Universalist Fellowship of the Eastern Slopes

## HIGH SCHOOL PROGRAMS

Anonymous

The Dorr Foundation

## INTERN PROJECT

Anonymous Private Foundation

## NORTH COUNTRY SCHOOLS/PROJECT K.I.T.E.

Anonymous

Stephanie Barns & Barbara Fortune

## RESIDENT BIRD PROJECT

Richard Steber

## TROUT RESTORATION PROJECT

Richard & Holly Fortin

Tish Hanlon & Stephen Weeder

Frederick Piehl

Jonathan Walpole

## HONORARIUM

Honor of Buzz & Dixie Coleman

by Joe & Michelle Szympnuch & Family

Honor of Michael L Cline

by David Hamel



## MEMORIAL GIFTS

### Beverly Klitsch

*Francis Murphy*

### Carol Brown

*Mrs. Richard Brackett*

*Ted Brown*

*Barbara Campbell*

*Peggy S. Conlin*

*Peter Crane & Holly Huhn*

*Rheba & Albert Davidson*

*Memorial Hospital Volunteers*

*Jack B. Middleton*

*Allen & Lynn Stevens*

*Richard A. Ware*

*William Wogisch*

### Stephen Card

*Dorilda Card*

*Rebecca Drewette-Card*

*Joyce Munise*

### Elaine Doyle

*Martin & Janet Basch*

*Richard & Norma Briana*

*Carol & William Denning*

*Nancy Keaveney*

*Eileen Macedo*

*Nancy Morrison*

*Nancy V. Murphy*

*Eileen T. Neville*

*Our Lady Of The Mountains*

*Paul & Connie Pinkham*

*Mary Lou Remon*

*Roberta Sullivan*

*Barb & Charlie Thomas*

*Paul & Joan Whetton*

*Shirley Young*

*"Look deep into nature, and then you will understand everything better." ...Albert Einstein*

# FIRST SEASON AUCTION AND BENEFIT DINNER 2015



## Sponsors:

**Anonymous**  
**Chalmers Insurance Group**  
**Green Thumb Farms**  
**Hill's Florist & Nursery**  
**Infinger Insurance**  
**Lupine, Inc**  
**M&M Assurance Group**  
**North Country Dental**  
**Northway Bank**  
**Pinetree Power**  
**Quisisana on Lake Kezar**

## Media Sponsors:

**Magic 104.5**  
**Outside Television-TV 16**  
**Valley Vision**  
**WMWV 93.5**  
**The Conway Daily Sun**  
**WPKQ 103.7**  
**Valley Women**

## InKind Sponsors:

**Black Cap Grille**  
**Eastern Mountain Sports**

## Grant's Supermarket

**Hannaford**  
**Fryeburg Academy**  
**Fryeburg Fair Associates**  
**Hart's Turkey Farm**  
**Johnny's Selected Seeds**  
**Lindt Chocolate**  
**Norway Linens**  
**Old Village Bakery**  
**Oxford House Inn**  
**Pepsi Varsity Beverage**  
**The Write Stuff**



## AUCTION DONORS:

1-2-1 fit  
 1785 Inn  
 A Better Body  
 Abbott Farm  
 Ace of Spades  
 Alkalay & Smillie, P.L.L.C.  
 All Things Arctic  
 Alvin J. Coleman & Sons  
 AMANA  
 American Air System  
 Andy Davis Storyteller  
 Ann Bennett  
 Antarctic Connection  
 Appalachian Mountain Club  
 Attitash Mountain Resort  
 Aubuchon Hardware  
 Ava Anderson Products/N Brown  
 B & C Collision  
 B.N.I.  
 Backcountry Bakery and Café  
 Barbara Kyle Balfour  
 Barbara Sperling  
 Bavarian Chocolate Haus  
 Bear Notch Ski Touring Center  
 Beatrice Geary  
 Beggar's Pouch  
 Bert Weiss Studio  
 Betty J Rogers, Fiber Artist  
 Big Dave's Bagels & Deli  
 Birch Ledge Designs  
 Black Cap Grille  
 Black Mountain  
 Bob Grant Photography  
 Bob Irvin  
 Bobby-Sue's  
 Boston Bruins  
 Boston Red Socks  
 Brian Fowler  
 Brook Pottery  
 Bum Wraps  
 Cabin Fever Restaurant  
 Café Noche  
 Canoe King Of New England  
 Castle in the Clouds  
 Celia Pray  
 Chalmers Insurance Group  
 Cher Riley  
 Cheryl and Paul Littlefield  
 Cheryl's Clipper Cuts  
 Chris Kaechele  
 Close Knit Sisters  
 Coca-Cola  
 Cold Spring Designs  
 Come and Go Pet Care  
 Comfort Inn & Suites  
 /Pirate's Cove Adventure Golf  
 Computer Port  
 Conway Café  
 Conway Eye Care  
 Conway Scenic Railroad  
 Conway Veterinary Hospital  
 Cool Jewels  
 Cooper, Cargill, Chant, PA  
 Cormack Construction Management  
 Inc  
 Country Cabinets, Etc.  
 Country Consulting Group  
 Covered Bridge Shoppe  
 Cranmore Mountain Resort  
 Customfit

Dana Place Inn  
 Darby Field Inn and Restaurant  
 David & Beth Sturdevant  
 DBA Chris Kaechele  
 Dean and Gayle Baker  
 Designs... by Deb S  
 Diane Reo State Farm Insurance  
 Dick Brisbois  
 Don and Edith Dashnau  
 Doug and Kathy Burnell  
 Dr. Marion Wachincki  
 Dr. Scott Ferguson  
 Dragonfly Massage  
 Dunkin Donuts  
 Dutch Bloemen Winkel  
 Eagle Mountain House  
 Earth and Fire Studio Gallery  
 /League of NH Craftsmen  
 East End Fish Print  
 Eastern Mountain Sports  
 Eastern Slope Inn  
 Eaton Village Store  
 Ebenezer's Restaurant & Pub  
 Ed & Carol Westervelt  
 Edge of Maine Gallery  
 Elaine Wilkey  
 Ellie and Michael Kahn  
 Elvio's Pizzeria  
 Emily and Peter Benson  
 Finishing Touches  
 Flossie's General Store & Emporium  
 Flower Drum Florist  
 Forest Moon Creations  
 Framed Art Superstore Outlet  
 Frechette Tire  
 Freedom Computer  
 Friend of Tin Mountain  
 Fryeburg Academy/  
 Laura Hill Eastman Performing Arts  
 Fryeburg Fair Assoc  
 Fryeburg Veterinary Hospital  
 Funspot  
 Galloping Horse Earrings  
 Garden Dreams  
 GBZ  
 Gemini Signs  
 George Ryan DDS  
 Glass Wear  
 Gold Leaf Frame & Gallery  
 Good Tail Lobster  
 Goshen Corner Sugar House  
 Granite State Glass  
 Grant's Supermarket Glen  
 Great Brook Studio  
 Great Glen Trails  
 Green Thumb Farms  
 Hair Designs  
 Ham Arena  
 Hampton Inn & Suites  
 Hannaford's  
 Harrison Hoyt  
 Hart's Turkey Farm Restaurant  
 Harvest Gold Gallery  
 Harvest Hills Animal Shelter  
 Hastings Law Office  
 Heart & Hand Inc.  
 Heather Littlefield  
 Hill's Florist and Nursery  
 Hill's RV  
 Hooligan's

Horsefeathers  
 Hospital Gift Shop  
 IME  
 Inn at Crystal Lake  
 Invisible Fence of So. Maine  
 J&J Floorcovering  
 J.A. Nice Mitten Co.  
 Jackson Art Gallery  
 Jackson Historical Society  
 Jay Rancourt  
 Jerry's Bloody Mary  
 Jessica Mixer Handmade Jewelry  
 Jill Reynolds  
 Joe Burgess  
 Johanna Vienneau  
 Johnny's Selected Seeds  
 Johnson Auto Care  
 Jon Whitney  
 Jonathan's Seafood  
 Karen Brisbois  
 Karen Eisenberg Designs  
 Karla's Pet Rendezvous  
 King Pine Ski Area  
 Kringles Country Store  
 Laconia Savings Bank  
 Larraine Cormack  
 Leavitt's Country Bakery  
 Leslie David Company  
 Limmer Boot Company  
 Linda Gray  
 Linda Sorensen Jewelry  
 Lindsey's Paint & Wallpaper  
 Lindt Chocolate  
 Lisa Carper Photography  
 Lisa Gardner  
 Lobster Trap Restaurant  
 Local Grocer  
 Lone Star Jewelers  
 Lori Jean Kinsey  
 Lucy Gatchell  
 Lupine, Inc.  
 Macomber Glass  
 Manchester Monarchs  
 Marge Kendrick  
 Marty Basch  
 McAuliffe - Shepard Planetarium  
 McKaella's Sweet Shop  
 McSherry Nursery  
 Metalscapes/Karen Rwombly  
 Michelle DeLucia/  
 Sunshine Daydream Farm  
 Milford Flooring  
 Moat Mountain Photography  
 Mother Earth Money Basket  
 Mount Washington Auto Road  
 Mt Washington Observatory  
 Mt Washington Ski Touring Ctr  
 Mount Wash-N-Tan  
 Mtn Sports Massage Therapy  
 Mountain Streams Music  
 Muddy Moose  
 MWV Mall Theatre  
 Nancy Grant  
 Nancy Miller  
 Nancy White Cassidy Art & Design  
 NAPA Redstone  
 Neil and Laura Cronin  
 NH Fisher Cats  
 Nordic Village Resort  
 North Conway Country Club

North Country Angler  
 North Country Dental  
 North Country Fair Jewelers  
 North Country Whittler  
 North Country Wholesale  
 Northeast Gems  
 Northeast Snowmobile Rentals  
 Northern Extremes Canoe and Kayak  
 Northway Bank  
 Notchland Inn  
 Off the Beaten Path  
 Old Village Bakery  
 OLLI at Granite State College  
 Omni Mount Washington Hotel  
 One Good Turn  
 Orthodontic Assoc.  
 Osgood Brothers  
 Outdoor Images  
 Papa's Florist and Gift Shop  
 Peter and Emily Benson  
 Physician Engineered Products  
 Pine River Landscaping  
 Pinetree Power/Tamworth  
 Pizza Barn  
 Pleasant Street Massage  
 Pop's Painting  
 Porter Office Machines  
 Portland Glass  
 Portland Sea Dogs  
 Priscilla's Country Kitchen  
 Profile Subaru & Power Sports  
 Purity Spring Resort  
 R & R Woodworkers  
 Ragged Mountain Equipment  
 Ravenwood Curio Shoppe  
 Reliable Oil Proulx Oil and Propane  
 Remick Country Doctor Museum  
 Residence Inn by Marriott  
 Richard M. Plusch Antiques  
 Rock House Mountain Bakery  
 /Matt Krugg  
 RockHouse Mountain Photography  
 Rockingham Electric  
 Rocky Mountain Chocolate Factory  
 Rosand - New Business Direction  
 Russ and Joan Lanoie  
 Russ Lanoie  
 Saco Bound  
 Saco River Canoe & Kayak  
 Saco River Pottery  
 Saco Valley Gem & Mineral Club  
 Sally Bags  
 Santa's Village  
 School House Farm  
 Settlers' Green Outlet Village  
 Shalimar of India  
 Shaw's Supermarket  
 Shen Dao Acupuncture  
 Silver Lake Massage Therapy  
 Silver Moon Mosaics  
 Silver Paw Pet Tags  
 Ski Works  
 Snow Pond Design  
 Snowville Inn  
 SoyFire Candle  
 Spectrum 1-Hour Photo & Camera  
 Spice & Grain  
 Spruce It Up Interiors  
 Squam Lakes Natural Science Ctr  
 Stone Mountain Arts Center

## AUCTION DONORS CONT

Stonehurst Manor  
Storyland  
Suzanne Federer  
T. Murray Wellness Center, Inc  
Tara Taylor and T.O. Currier  
TD Bank  
The Children's Museum -Dover  
The Clipper Merchant Teahouse  
The Conway Daily Sun  
The Design Bungalow  
The Metropolitan Coffee House  
The MWV Children's Museum  
The Oxford House Inn  
The Reflective Arts Center  
The UPS Store  
The Wooden Soldier  
Tin Mountain Conservation Ctr  
Tin Roof Primitives  
Tina Craig/Park Lane Jewelry  
TMC Books  
Todd's Automotive  
Toy Chest  
Trails End Ice Cream Shop  
Transformational Body Therapy  
Tribal Trills/Barbara Boxer  
Trumbull's Hardware  
Tuckerman Brewing Company  
Uberblast  
Vintage Baking Company  
Vintage Frameworks  
Vito Marcello's Italian Bistro  
Water's Edge Silks and Jewelry  
Wayside Farm  
Wentworth Golf Club  
Weston's Farm Stand  
White Birch Books  
White Mountain Aquatic Fnd  
White Mountain Cider Company  
White Mountain Endodontics  
White Mountain Hotel & Resort  
White Mountain Hypnosis Center  
White Mountain Photo-Gallery  
White Mountain Puzzles  
Wild Light Images  
Wildcat Mountain Ski Area  
Wildcat Service Station  
Z P Sports  
Zeb's General Store  
Zumba Fitness w/ Dotti Aiello

## AUCTION CASH DONORS

Kringle's Country Store  
Frederick & Teresa Leach  
Milford Flooring, Inc.  
Saco Valley Gem & Mineral Club  
Glenn & Sonni Saunders

## SPECIAL THANKS:

Fryeburg Academy  
Interact Club  
The Oxford House Inn  
Duddie and Roy Andrews  
Bill Brochu  
Stephen Graustein  
Brian Hill  
Jack Wolter  
Johana Vienneau  
Fryeburg Fair Associates  
Tony Andreano  
George Cleveland  
Theresa Gallagher  
Susan Goodwin  
Linda Hastings  
Jen and mAtt Hohenboken  
Barbara and Harrison Hoyt  
Pat Heiges  
Margaret Marshall  
Karl and Susan Pfeil  
Sophia DiBella  
Katelyn Dolan  
Tin Mountain Trustees  
Tin Mountain Staff  
Tin Mountain Volunteers

# MT. WASHINGTON AUTO ROAD BICYCLE HILLCLIMB

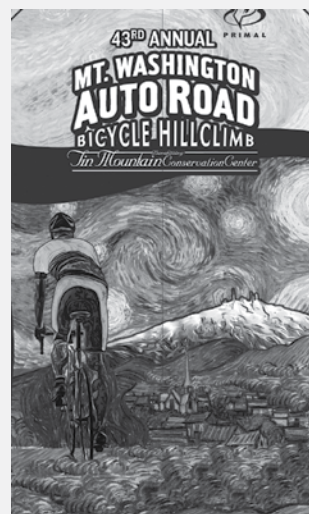
*Benefit of Tin Mountain*

## SPONSORS:

Appalachian Mountain Club  
BikeReg.com  
BKool Connect/Sport  
Cadence Wealth Management  
ClaimLinx  
Destination Cycling  
Eastern Mountain Sports  
Harrison Creative  
Jeff Fongemie  
Lakes Region Coca Cola  
Magic 104 FM  
Marti Shea Coaching  
Mt. Washington Auto Road  
Pearl Izumi N. Conway  
Polartec  
Primal Wear  
Red Jersey Cyclery  
The Conway Daily Sun  
The Valley Originals  
White Mountain Amateur Radio Club  
WMWV 93.5  
WPKQ 103.7

## HillClimb Pledge Donors

Paul Basken  
Lawrence Beck  
Alex Bonnar  
Andrew Chambers  
Thomas Dineen  
John DiRico  
Bob & Lorraine Donovan  
Elizabeth Gilmour  
Maria Goodwin  
Jon Heydenreich  
Sarah Janakas  
Rich Matthes  
Fiona Moore  
Kameel Nasr  
Joshua Salit  
John Staples  
Cathleen Sullivan  
Jeremy Taurig  
Jonah Thompson  
John Weaver



# MT. WASHINGTON CENTURY RIDE

*Benefit of Tin Mountain*

## SPONSORS & DONORS:



Roger Carrier  
Bagels Plus  
ClaimLinx  
Conway Daily Sun  
Eastern Mountain Sports  
Eastside Bike Guides  
Fandangles Catering  
Green Thumb Farms  
Harrison Creative  
Jen Hohenboken  
Lakes Region Coca-Cola  
Magic 104 FM  
Pearl Izumi N. Conway  
Primal Wear  
Quisisana Corp.  
The Mountain Ear  
The Valley Originals  
White Mountain Amateur Radio Club  
White Mountain Milers  
WMWV 93.5  
WPKQ 103.7



## SPECIAL THANKS TO BUSINESSES AND INDIVIDUALS DONATING SERVICES, TIME AND PRODUCTS:

Bill Almy  
Jeanette Almy  
Tony Andreano  
Duddie Andrews  
Roy Andrews  
Carlene Bane  
Stephanie Barnes  
Meagan Barry  
Nona Bauer  
Martha Benesh  
Anne Bennett  
Emily Benson  
Peter Benson  
Kim Bowker  
Alex Bradford  
Bill Brochu  
Eileen Brochu  
Joe Burgess  
Judy Burgess  
Doug Burnell  
Kathy Burnell  
Brian Byrne  
Kathy Byrne  
Peter Capozzoli  
Jeff Cohen  
Dixie Coleman  
David Condoulis  
Lorraine Cormack  
Christine Costello  
Bob Crowley  
Sue Crowley  
T.O. Currier  
Bruce Curtis-McLane  
Kate Curtis-McLane  
Marilyn D'Aquanni  
Cliff Dickenson  
Steven Discordia  
Linda Denis  
Kevin Donahoe  
Donna Donnelly  
Bette DuBois  
Lisa DuFault  
Mike DuFilho  
Sarah Eastman  
Rick Faucher  
Sarah Fensor  
Wayne Fitch  
Bert Flower  
Stuart Feldman  
Ralph Fiore  
Sally Fiore  
Gay Folland  
Bryant Fong  
Barbara Fortune  
Judy Fowler  
Aaron Fryman  
Jim Gallagher  
Theresa Gallagher  
Anne Garland  
Henry Gotjen  
Dale Goodwin  
Pat Goodwin  
Gaye Gould  
Linda Gray  
Joanne Green  
Scott Hammond  
Tish Hanlon  
Betsey Harding  
Sam Harding  
Jim Hastings  
Linda Hastings  
Bob Heiges  
Pat Heiges  
Steve Hempel  
Elaine Hennigan  
Paul Hennigan  
Charlene Hibbs  
John Higgins  
Pat Higgins  
Bekka Hohenboken  
Jen Hohenboken  
Matt Hohenboken

Barbara Hoyt  
Harrison Hoyt  
Gloria Hutchings  
Greg Izzo  
Cheryl Keator  
John Keator  
Linda King  
Rick Klausner  
Peter Klose  
Walter Kurz  
Timothy Lafayette  
Walter Lancaster  
Russ Lanoie  
Joe Larue  
Mike Levine  
Diana Levy  
Larry Leonard  
Nels Liljedahl  
Cheryl Littlefield  
Paul Littlefield  
Sean Littlefield  
Joe Manning  
Anne Mauro  
Tracy Marnich  
Margaret Marshall  
Dave Mason  
Jean Mason  
Diana Medina  
Maria Medina  
Kathy Moore  
Lily Morgan  
Frank Murphy  
Mike Nilan  
Vince Pelote  
Anne Peterson  
Karl Pfeil  
Sue Pfeil  
Carol Pierce  
Cathy Poppenwimer  
Luke Quigley  
Connor Rosenblatt  
Mark Ross-Parent  
Susan Ross-Parent  
Lynne Route  
Leslie Rowse  
Jeff Sansone  
Andrea Santariello  
Bob Santoro  
Dawson Santoro  
Carol Saunders  
Merle Sciacca  
Wendell Shaffer  
Mary Sheldon  
Terry Sheridan  
Ward Simonton  
Laurel Smith  
Peter Smith  
Donovan Spaulding  
Larissa Spaulding  
Jean Steber  
Rick Steber  
Bob Stevenson  
Dick Stewart  
Marc Stowbridge  
Sue Stowbridge  
Judy Swartz  
Marvin Swartz  
Mike Tamulis  
Chris Tanguay  
Cam Tascione  
Tara Taylor  
Tyler Thomas  
Amy Thompson  
Lisa Thurston  
Karen Travers-Lynch  
Johanna Vienneau  
Ben Timm  
June Waltz  
Miles Waltz  
Herm Weber  
Merle Weber  
Stephen Weeder

Cathy Weiss  
Brenda Weston  
Lisa White  
Jack Wolter  
Steve Woodcock  
Jeannie Woodward  
Tom Workman  
Suzanne Young  
Gail Zimmerman  
  
AJ Coleman & Son  
Anonymous  
Appalachian Mountain Club  
Athletes Advantage Massage Therapy  
Bagels Plus  
Bea's Café  
Big Dave's Bagels  
Ann & Richard Bennett  
BikeReg.com  
BKOOOL  
Cabot Cheese Creamery  
Café Noche  
Chandel Associate's P.A.  
Charity Chatter  
Chef's Market  
ClaimLinX  
Dr. Robert Denencourt  
Destination Cycling  
Eastern Mountain Sports  
Fandangle's Catering  
Flatbread Co of North Conway  
Frontside Grind  
Fryeburg Fair Association  
Fryeburg Interact Club  
Grant's Shop 'n Save  
Hannaford Supermarket  
Harrison Creative  
Jen & Matt Hohenboken  
Junior National Honor Society JBES  
Eleanor & Michael Kahn  
Kennett Key Club  
Lakes Region Coca Cola  
Linsey's Paint and Wallpaper  
Lindt Chocolate Shop  
LLBean, Inc.  
Magic 104 FM  
Mountain Garden Club  
Charles & Pamela Monaghan  
Paris Farmer's Union  
Pearl Izumi  
Pequawket Kids  
Karl & Susan Pfeil  
POLARTEC  
Lee & Sylvia Pollock  
Mount Washington Radio  
Old Village Bakery  
Outside Television-White Mountains  
TV-16  
PRIMAL  
Quisisana Corp. II  
Ragged Mountain  
Saco Valley Gem and Mineral Club  
Shartners Farms  
Shaw's Supermarket  
Sherman Farms  
Linda & Drew Smith  
Smith & Town Printers  
Starbuck's of North Conway  
The Conway Daily Sun  
The Local Grocer  
The Met Coffee House  
The Valley Originals  
The Write Stuff  
Valley Vision  
Weston's Farm  
White Birch Books  
White Mountain Amateur Radio Club  
WMWV  
WPKQ



Marvin & Judy Swartz Awarded Volunteers of the Year.



Margaret Marshall & Judy Fowler are recognized for exemplary Years of Service as Tin Mountain Trustees.



NRCS recognizes the TMCC gardens as pollinator habitat. Nels Liljedahl, Lori Kinsey, Debra Marnich, Dr Michael Cline

### PHOTOGRAPHERS:

Ed & Kathy Bergeron  
Bill Brochu  
Naomi Buckman  
Judy & Joe Burgess  
Bill Brochu  
Sophia DiBella  
Katelyn Dolan  
Donna Dolan  
Lisa DuFault  
Tom Eastman  
Debbie Eddison  
Sarah Frankel  
Jamie Gemmetti  
Roger Irwin  
Leo Kenney  
Lori Kinsey  
Heather Leach  
Chris Lewey  
J.S. McElvery  
Karl & Susan Pfeil  
Craig Harrison  
Stefi Hastings  
Dick Pollock  
David Sordi  
Larissa Spaulding  
Mark D. Shiller  
Stephen A. Thomas  
Andrew Thompson



Andrew Thompson

# TIN MOUNTAIN PROGRAM DESCRIPTIONS

## ADULT NATURE COURSES

Tin Mountain *Adult Nature Courses* provide an in-depth look at various natural and cultural history topics. Individuals with all levels of experience are encouraged to enroll. All programs combine time in the classroom and lab with hands-on field studies and may include lectures, slideshows, group discussions, guest speakers, and selected readings.

## COMMUNITY NATURE PROGRAM SERIES

TMCC offers a variety of hands-on environmental education programs for adults and families of the Mt. Washington Valley area and western Maine. The Community Nature Program Series supported by L.L. Bean and is a major vehicle for drawing families into the natural world. Over 70 programs are offered throughout the year.

## OUTREACH PROGRAMS:

**Naturalist Certification Program:** Community members increase their understanding of the natural world while developing new skills to share as Certified Naturalists. Participants attend various Adult Nature Courses, Nature programs, special workshops, and completed an independent project to fulfill their certification by Tin Mountain.

**Tin Mountain Renewable Energy Initiative (TMREI):** This program was created in the fall of 2010 to address the need for solar energy in the Mount Washington Valley. Based on PAREI's model of neighbor-helping-neighbor community energy raisers in Plymouth, NH. Our local organization relies on the power of volunteers to lower installation costs and strengthen community bonds.

**College Internship Program:** This valuable effort enables Tin Mountain to expand its projects and program offerings while providing focused training and practical experience that is necessary for young professionals to enter the workplace with confidence. In addition, interns develop sustained relationships within the environmental and natural science community that provide the underpinnings of a lifelong network in their chosen field.

**Eco-Forum Lunch Series:** Diverse environmental issues are presented by outstanding speakers the second Thursday of the month sponsored by Flatbread Co of N Conway, Frontside Grind, The Met Coffee House, and Old Village Bakery. The program is free and open to the public. Views expressed in the Eco-Forum are those of the speakers and not necessarily those of Tin Mountain.



## SUMMER CAMP PROGRAMS

Tin Mountain Conservation Center has offered summer camp programs to children ages 4-16 for the past 32 years. *Kindercamp* and *Day Camp* are presented at facilities in four different locations for kids ages 4 to 9 years old. *Nature Theme Camps* integrate nature with art, music, history and water for children 6-12 years. *Peaks and Paddles Intro* allows younger campers (ages 9-10 years) to gain confidence and acquire outdoor skills through day hikes a day of canoeing, and a one-night campout in the White Mountains. In *Canoe Voyageurs*, campers ages 11-12 learn canoe techniques with two days of canoeing followed by a three day trip to Lake Umbagog! Older children ages 13-16 years hike and camp the Presidential Range of the White Mountains in *Paths and Peaks*.

## SCHOOL PROGRAMS:

**Environmental Year:** Developed for elementary schools, a Tin Mountain teacher/naturalist visits the classroom for 34 weeks (51 hours) with a comprehensive set of activities and trips that teach basic principles of ecology and natural sciences. Concepts learned in class are applied to the field through numerous outdoor activities and trips. It is recognized as the backbone of our school programs because it allows our teacher/naturalists to work closely with the same students each week for the entire school year, providing in-depth instruction and curriculum support.

**Project KITE (Kids in the Environment):** A multi-disciplinary program for grades K-8, Project KITE was developed to support existing curricula by providing a special focus on the natural resources that sustain the economic and social underpinnings of the region. Working closely with teachers, Tin Mountain provides three presentations by a teacher/naturalist and a field trip on each unit, including forests, wildlife, wetlands and mountains.

### Maine Environmental Science Academy (MESA):

Tin Mountain staff spends one morning each week throughout the entire year with students from grades 6, 7, and 8 at Molly Ockett Middle School in Fryeburg. This exceptional program is part of the school's effort to integrate writing, math, technology, cultural history, and the arts through classes focused on the natural science and the environment. Over the past three years, curricula have been developed around forest ecology, water and the environment, and wildlife and wildlife habitat. The program has received state-level recognition for outstanding academic results and community involvement by students.

**Extra Hours Program:** Teachers and Tin Mountain staff tailor programs to meet special needs of different schools. Examples include leading field trips, identifying special resources and materials, and conducting special projects such as recycling or river studies.





Copyright: Roger Irwin

