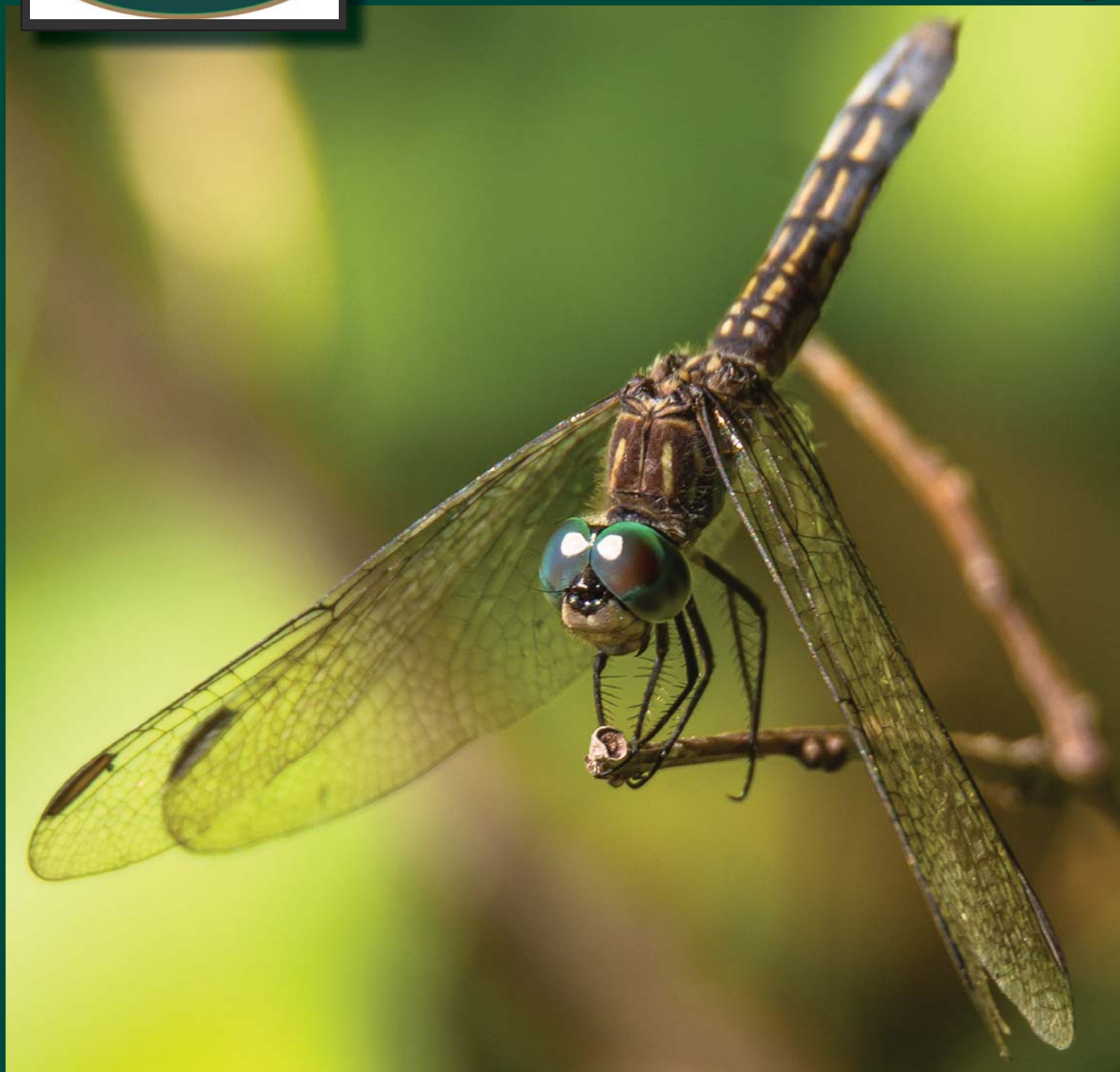




[www.tinmountain.org](http://www.tinmountain.org)



**ANNUAL REPORT**

**10/01/16 - 09/30/17**

# Annual Report

10/01/16-09/30/2017

## Board of Trustees:

Peter Klose, *Chair*  
Jen Hohenboken, *Vice-Chair*  
Thaire Bryant, *Treasurer*  
Karen Travers Lynch, *Secretary*  
Rick Steber, Trustee at Large  
Jeanette Almy  
Tony Andreano  
Megan Barry  
William Broussard  
Norman Cloutier  
David Freedman  
Pat Heiges  
Cheryl Keator  
John Keator  
Joe Manning  
Margaret Marshall  
Kim Matte  
Johanna Vienneau

*Honorary Trustee*  
Seth Rockwell

## Staff:

*Executive Director*  
Dr. Michael L. Cline  
Lori Jean Kinsey

*Education Director*  
Phaedra Demers  
*Communications/PR Manager*  
Donna Marie Dolan  
*Program Director*  
Nora Dufilho  
*Property/Trout Project Manager*  
Dick Fortin  
*Event Coordinator*  
Jotham Oliver  
*Business Manager*  
Nancy Simonton  
*Membership Coordinator*  
Kathryn Thorney

*Teacher Naturalists*  
Michael Dufilho  
Dexter Harding  
Matthew Maloney

## Interns:

Rebecca Bracken  
Maria Chavez Orduz  
Sarah Fensore  
Gregory Shafer  
Mariah Sweany  
Kiah Walker  
Samuel Zabronsky



## LETTER FROM THE CHAIR

Dear Members and Friends of Tin Mountain,

Our last fiscal year, October 1, 2016 to September 30, 2017, continued the past success in fund raising, staff development, scholarship donations, school programs, summer camps and adult environmental programs.

That fiscal year also started with the need to undertake two of the more difficult tasks assigned to a board, long range planning and finding a new Executive Director.

First, Tin Mountain's Three Year Plan update was started under the guidance of our respected long term Executive Director, Dr. Michael Cline. With the help of Joe Manning of the Fryeburg Academy, a detailed survey was conducted to find out what programs the board, staff, volunteers and friends of Tin Mountain thought were the most valuable in meeting our mission. The top three categories that we should continue to put full effort into are:

- a) School Programs, in which over 6000 students annually explore the wonderful natural communities of the Mount Washington Valley region;
- b) Summer and Winter Camps for children of all levels of camping rigor; and
- c) Evening and Adult Environmental Programs, ranging from canoe trips on local lakes to lectures on solar power and energy conservation.

Thanks to our many donors, Tin Mountain will continue to grow the above programs, and many more, based on the vision and solid foundation established 38 years ago.

Second, the need to find a new Executive Director was made necessary by the passing of Michael Cline on January 3, 2017 (see Memorial page). After reviewing resumes, conducting interviews and much discussion, the board unanimously approved our Education Director of 33 years, Lori Jean Kinsey as the new Executive Director. And the staff, board, volunteers and friends of Tin Mountain couldn't be happier with that decision!

I want to thank all who have contributed so generously of their time and their treasure over the past year to make Tin Mountain as successful as it is now and looks to be in the future. Your support assures that natural history and environment science will be among the best understood topics in the Mount Washington Valley region.

Thank you ever so much!!

Sincerely,

Peter Klose  
Chair, Tin Mountain Board of Trustees





# DIRECTOR'S REPORT

BY LORI JEAN KINSEY

Tin Mountain founder Barbara Rockwell Henry had the vision in 1980 to establish an environmental learning center to work with local schools to educate students about the wonders of their own backyards. It started slowly but within 4 years Tin Mountain was in all of the schools from Tamworth to Jackson. Fast forward 38 years and Tin Mountain offers environmental education programs to students in SAU 9 and 13, plus students in Berlin and Gorham, and in MSAD 72 in Fryeburg Maine.

We reach over 6,000 students a year getting them out of doors to explore the natural history of the communities they live in. Last year students in the Molly Ockett Middle School's Maine Environmental Science Academy paddled the Saco River with Teacher/Naturalist Mike Dufilho. Students in Berlin 5th grade went to the summit of Mount Washington in Auto Road vans, and explored the world above tree-line before hiking down the Old Jackson Road Trail. Third grade students in Tamworth kept detailed journals of natural history sightings in and around Tamworth during their Environmental Year program which met weekly with Teacher/Naturalist Dexter Harding. Nature, there's no better classroom!

As the years progressed so did the vision. In 2010 Michael Cline had the vision to develop an intern research program undertaking forestry management, avian research, environmental education, and sustainability projects. It has since expanded to include cutting edge brook trout habitat restoration. This summer we will have 5 new interns bringing the total up to forty seven interns since its inception in 2007. This program not only provides valuable data, but gives the in-depth field experience that many college students and recent graduates need to round out their college years and gain experience in the field.

Land conservation speaks volumes when it comes to protecting lands from future development. Barbara and David Henry had one of the first conservation easements in the area in 1977 with The Society of New Hampshire Forests. As a testimony to their vision, 223 acres of prime forested land are protected in the heart of Jackson. Currently Tin Mountain owns 1,409 acres of land, all of which are under a conservation easement with the Upper Saco Valley Land Trust. The most recent parcel added is 93 acres on Bald Hill Road adjacent to the Nature Learning Center acreage. It will be dedicated this summer as the Dr. Michael Cline Memorial Forest, allowing expanded hiking trails and research opportunities, and creating a contiguous parcel of land providing a wildlife corridor to the White Mountain National Forest.



Education at any age can be seen as long-term vision. In 1980 a handful of nature programs for adults and families were presented throughout the year on topics ranging from Forestry to Birds. Today we offer over 70 programs yearly to adults, families, and children, including canoe trips on Lake Umbagog, the Fantastic Fungi Foray, and evening presentations ranging from trout to wildflowers. Education is not just for children!

Famous environmentalist Rachel Carson speaks of the importance of keeping a sense of wonder alive. Her focus was on children but I'm going to take that one step further and include people of all ages. "If a child/person is to keep his inborn sense of wonder alive, he or she needs the companionship of at least one adult/friend who can share it with him, rediscovering with him the joy, excitement, and mystery of the world we live in." Tin Mountain naturalists often fill this role for not only children but also adults and families. The excitement of students young and old alike when we enter a classroom or discover something in the field, is palatable. You too could be that person in someone's life. Be a visionary. As a parent, grandparent, friend, or teacher, remember, Nature, there's no better classroom!



#### Interns:

Sam Zabronsky, Greg Shafe, Maria Chavez Orduz, Mariah Sweany, Sarah Fensore



Donna Dolan





## SCHOOL PROGRAMS

Tin Mountain school programs reach five local school districts and are an integral part of 17 schools serving nearly 6,000 students in the greater Mt. Washington Valley, the Berlin/Gorham area, and western Maine. Multiple classroom visits and field trips throughout the year greatly magnify the actual contact hours between naturalists and students. Tin Mountain's multi-session, comprehensive approach sets its programming apart from other school-based environmental education efforts. Teacher/Naturalists devote classroom lessons and field trips to exploring the many rivers, ponds, forests, mountains, and special natural areas in the region. School programs at every grade level emphasize "hands-on" learning during all seasons of the year. Students have sustained contact with Tin Mountain naturalists throughout their entire school careers. All environmental learning programs are tailored to the individual curricula of participating schools.

Tin Mountain school programs were presented in all of the schools in SAU #9, SAU #13, and MSAD #72, thanks to strong support from teachers, parents, and school administrators. Tin Mountain has been presenting programs in area schools for over 30 years, and student and teachers find them to be a critical part of their classes. Additionally, Tin Mountain continued school programs in Berlin and Gorham thanks to grants and foundations.

Tin Mountain is an integral part of the Maine Environmental Science Academy (MESA) at Molly Ockett Middle School using a hands-on approach to teaching ecology. One day each week students learned about water topics ranging from wetlands and watersheds, including the health of water in the Mount Washington Valley. The year kicked off with a paddle down the Saco River.

School field trips are opportunities to teach natural science and become familiar with the environment in students' own backyards, and teacher/naturalists adapt lessons to incorporate trips to local natural areas and discuss historic land uses. Because the Board of Trustees is committed to providing quality environmental education programs at an affordable price, Tin Mountain school programs are offered at half the actual cost to present; the Board and staff fundraise to cover the remaining costs.

Tin Mountain programs don't stop at the end of the school day. Many local communities have well-established after-school programs in which Tin Mountain participates. It's a perfect time of day to explore the natural world. Many of the schools have terrific school yards replete with forests, fields, and trails, with views of Mt. Washington and other inspiring peaks, and even an occasional pond to explore. After school programs were presented to students through Project SUCCEED at Pine Tree, Conway, and John Fuller Elementary, and Pequawket Kids Association at the Snow School in Fryeburg, Maine.

## NATURE LEARNING CENTER PROGRAMS

The Community Nature Program Series presented over 70 programs attracting enthusiastic participants of all ages. The Bank of New Hampshire joined L.L. Bean in providing critical support in sponsoring the popular series that reached over 1,200 people this past year. Participants enjoyed canoeing Lake Umbagog, searching for hawks on our annual hawk watch with Chris Lewey, and looking for mushrooms in our annual Fall Fungi Foray. They also enjoyed talks on the ecology of forest fires, mosses, liverworts, and warbler identification.

The Eco-Forum Lunchtime Lecture Series provides provocative monthly presentations by experts on a wide variety of issues from maintaining a commercial orchard, to a lively talk with Conway Public Works Director, Paul DegliAngeli on "The Garbage of the Mount Washington Valley".

The Featured Nature Artists program is a revolving monthly exhibit of local nature artists presented in the lobby of the Nature Learning Center. This year we have hosted exhibits of photography, oil paintings, and watercolors including artists Rick Gerber, USVLT Arts Celebrates Place artists, The North Country Camera Club, and photographer Joe Viger. The venue has attracted the best talent in the area, and evening art show openings are highly anticipated events.

## NATURE CAMPS

Tin Mountain camp programs reached nearly 200 children and families last year. Nature summer camps attract children ages 4 to 16 to camp locations in Fryeburg, ME, Jackson, Albany, and South Tamworth, NH. Participants learn firsthand about the local natural environment through outdoor exploration, all under the guidance of trained naturalists and camp staff. Younger children attend day camp while a variety of weeklong adventures to wild areas in northern New England are offered to the older age groups. The weeklong Winter Camp provided an opportunity for children to spend their school break outside learning and having fun in the snow.

True to its commitment to providing high-quality environmental education at an affordable price, Tin Mountain provides financial aid to local families that would otherwise have difficulty sending their children to summer nature camps. Scholarships in the amount of \$7,140 were awarded in 2016-2017.



## OTHER COMMUNITY PROGRAMS

Tin Mountain continues to present summer programs throughout the Mt. Washington Valley. It was the 16th year that Tin Mountain has presented summer programs at the Wildcat Mountain Ski Area. These programs continue to attract guests to the greater Mt. Washington Valley, and they provide natural history about the region that enriches the experience of visitors.

Tin Mountain's 19th Annual Meeting was held in May at the Nature Learning Center in Albany and featured several fantastic field trips, and a presentation by John Pumilo on Migratory Song Birds. This event also presented an opportunity for Tin Mountain to recognize individuals who have made significant contributions during the past year. This year the organization's Distinguished Service Award was presented to Norman Cloutier, Volunteer of the Year to Johanna Vienneau, and Outstanding Environmental Educator to Lara Preece. The Business Partner Award recognized Alvin J Coleman and Son, Inc, and the Trustees' Exemplary Service Award was presented to Jen Hohenboken.

## VOLUNTEERISM

Supplementing its talented staff, Tin Mountain benefits from a committed and enthusiastic complement of volunteers. Over 4,000 hours were logged by volunteers at programs that help to promote Tin Mountain's objectives and vision within the Valley and assist in the fundraising that is essential to continue environmental education programming. Some of these programs include: a display the Fryeburg Fair, the First Season Benefit Dinner/Auction, Mt. Washington Century Bicycle Ride, and Mt. Washington Auto Road Bicycle Hillclimb. Many additional volunteer hours were generously donated to library support, trail construction/maintenance, recycling, stone wall construction, murals, and much more. Tin Mountain could not manage without our volunteers.

## SPECIAL EVENTS

The 45th Mt. Washington Auto Road Bicycle Hillclimb provided financial support for the organization's work. Special thanks are extended to the Mt Washington Auto Road for its continued partnership. Most years, the changeable weather on the summit varies from clear skies to wind, rain, and sleet over the course of the race, but for the seventh year in a row, the weather cleared out for a remarkable day on the summit of Mount Washington. Riders who expected the typical natural challenges on the "Rockpile" were relieved more than disappointed.

The 16th annual Mt. Washington Century Ride was especially successful in 2017, having raised significant support for Tin Mountain programs. The ride starts and ends at the Tin Mountain Nature Learning Center in Albany. The 100-mile course takes riders around Mt. Washington, over three notches, and through some of the most beautiful land on earth. This year the Century attracted nearly 250 registrants from all around New England and beyond. New signage made it easier for the riders to follow the challenging course whether it was 40, 80, or 109 miles.

The 31st annual First Season Benefit Dinner/Auction was held at the Fryeburg Academy Fieldhouse. It involved over 350 local businesses and individuals who generously donated articles to be auctioned. In addition, Business Sponsors provided critical support for the event. The majority of the Business Sponsors have been supporting Tin Mountain programs for many

years, and again we are grateful for their ongoing support. Over 320 people attend the festival enjoying fantastic food and fine quality auction items.

The Fryeburg Fair display on Beavers featured an elaborate beaver meadow design with numerous mounted birds, dozens of native wildlife species, and a scavenger hunt for the children. The Fair afforded yet another opportunity to spread the word about the Tin Mountain mission and to provide a learning experience for many. The exhibit was staffed by TMCC staff and volunteers.

## NATURE LEARNING CENTER/ ROCKWELL SANCTUARY

During the 2016-17 winter, the Nature Learning Center used about 2.5 cords of wood as backup to the solar thermal collectors in supplying heat for the entire 8,500 ft<sup>2</sup> building. With the generous support of the Thomas W. Haas Foundation, as well as Rogers Family Trust, the Anna B. Stearns Foundation, and Frase Electric, we expanded our solar arrays to include 22 new solar panels on the roof of the intern cabin as well as 12 new panels in a free standing array. We are back to being Net Zero, producing more energy than we use. The Tin Mountain Renewable Energy Initiative (TMREI) continues to provide hands-on assistance to individuals installing solar thermal systems.

Facility rentals were successful during the past year. Tin Mountain Conservation Center offers the ideal setting for a green wedding with its energy-efficient Nature Center and beautiful Rockwell Sanctuary. From the Nature Center's net-zero carbon foot print to planting wedding flowers and recycling wedding leftovers, Tin Mountain can be a great sustainable partner in planning any eco-wedding.

Volunteers were busy with numerous projects on the Rockwell Sanctuary. Their hard work maintained the entire trail network, cut and split many cords of firewood, tended the gardens, sawed lumber, completed the survey of over 30 nest boxes, and accomplished countless tasks around the Center. On the Tin Mountain Jackson property, a generous grant continues to allow numerous volunteers to clear fields, repair trails, build rock steps, and construct bridges over streams and wet areas, and remove invasive plants such as glossy buckthorn and Japanese barberry from the landscape.

## MEMBERSHIP

During the 2016-2017 fiscal year, the Tin Mountain membership base increased by 46 new members, 6 of which were sustaining memberships. The annual fund drives, both in the spring and fall, totaled \$46,901. Yearly gifts, whether membership or annual fund donations, continue to provide essential support for environmental programs in schools, at summer camps and within the community. The Michael Cline Memorial Intern Fund was established in 2017 as a tribute to past Executive Director Dr. Michael Cline. Over \$23,323 was generated in his memory and will support the intern program in the future. Long-term strategies can help sustain Tin Mountain programs into the future through Estate Planning, Charitable Remainder Trusts, or Charitable Lead Trusts. Call TMCC Director Lori Jean Kinsey for details.



## TIN MOUNTAIN TIMBERLANDS

Tin Mountain strives to manage our timberlands in a responsible manner adhering to sustainable forest practices. The goals are twofold: 1) to demonstrate sustainable forestry methods that provide both high-quality wood products and essential forest habitats and 2) to provide an additional revenue stream to help fund environmental education programs. We undertook a 44 acre cut this past year which yielded \$16,274.

### Endowment Fund

Tin Mountain maintains an endowment as a designated fund with the New Hampshire Charitable Foundation (NHCF) in Concord. The NHCF invests and manages the \$529,476 principal, making an annual distribution to Tin Mountain from the earned interest based upon predetermined calculations that ensure a certain level of growth in the designated fund. In fiscal year 10/01/16-9/30/17 interest distributions to Tin Mountain's general operations amounted to \$20,632. The NHCF's combined Investment Fund is recognized as one of the most secure places for a nonprofit to build an endowment.

### Suzy Engler Camp Scholarship Fund

The Tin Mountain Suzy Engler Scholarship Fund honors the late Suzy Engler, a former Administrative Assistant at Tin Mountain for many years. Suzy was especially interested in providing children with "hands-on" nature camp experiences.

### Regional Conservation Partnership Project

Tin Mountain has been working under a contract with Natural Resources Conservation Service (NRCS) for the past three years on a Regional Conservation Partnership Project (RCPP) with the Beebe River lands, owned by the Conservation Fund. Richard Fortin has been the Project Manager since its inception. The project objective is to enhance native Brook Trout populations/health by increasing number/size/depth of pools via wood additions, restoring functioning forest riparian habitat, and developing long-term management plans and streamside buffers. The Conservation Fund, the Pemiqgewas-set Chapter of Trout Unlimited, and NH Fish and Game contributed numerous volunteer hours.

### Planned Giving Opportunities

**Bequests:** Bequests must satisfy personal and family obligations first; however, donors may also include Tin Mountain in their estate planning. Making Tin Mountain a beneficiary helps ensure that Tin Mountain's work will continue in future years while reducing estate taxes.

**Charitable Remainder Trusts:** Remainder trusts allow donors to transfer assets like stock to a trust and still retain its income for life. Ultimately, the assets become TMCC's, allowing the donor to keep an asset's income, avoid capital gains tax on its sale, take an income tax deduction, and make a commitment to TMCC's future.

**Charitable Lead Trust:** Lead trusts allow donors to keep assets while giving Tin Mountain their income for a specified period of time. Donors receive an immediate gift tax deduction for the full present value of the asset. This is a good way to pass assets on to heirs at full value while supporting Tin Mountain.

*For more information on planned giving options, contact Executive Director, Lori Jean Kinsey at (603) 447-6991 or write to her at 1245 Bald Hill Road, Albany, NH 03818. Tin Mountain also happily accepts and liquidates gifts of stocks and bonds.*



Bill Brochu

## GRANTS AND RESTRICTED GIFTS

### CHASE POND OBSERVATION DECK

Wilson Conservation Trust/Anonymous

### COLLEGE SCHOLARSHIP

David Condoulis

Marilyn D'Aquanni

Theresa & James Gallagher

Cynthia Grane

Jen & Matt Hohenboken

### EQUIPMENT GRANT

Pequawket Foundation Fund of NHCF

### COMMUNITY PROGRAMS

Bank of New Hampshire

LL Bean Inc.

Settlers Green

### GENERAL SUPPORT

Roy & Duddie Andrews

Anonymous Foundation

Anonymous 1

Anonymous 2

Ash Tree Fund of NH

Doug & Kathy Burnell

Buzz Coleman

Eversource

Marriott Foundation

Lewis M & Esther Perlstein Family Foundation

Seth Rockwell

Story Land

Howie & Sue Wemyss

The Wentworth Resort

### INTERN PROGRAM

Anonymous Foundation

### NATURE PROGRAM SERIES

Bank of New Hampshire

Martha & Frank Benesh

Stephen Garber

LL Bean, Inc.

Kim & Christopher Matte

Settlers Green

Rick & Jean Steber

### PROJECT KITE BERLIN-GORHAM SCHOOLS

Anonymous Foundation

### PROJECT KITE JOHN FULLER ELEMENTARY

Connie Davis Watson Foundation

### SOLAR INSTALLATION/INTERN CABIN

Frase Electric

Thomas W Haas Fund of NHCF

### TROUT RESTORATION PROJECT SUPPORT

Bob Jolley

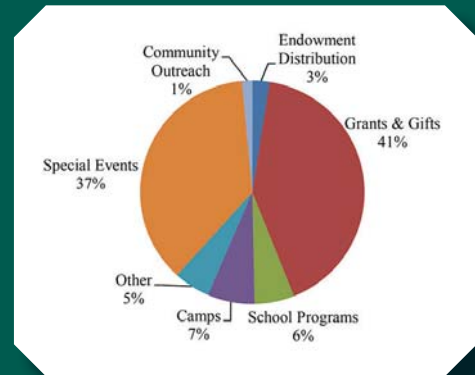
Upper Saco Valley Land Trust

# FINANCIAL STATEMENT

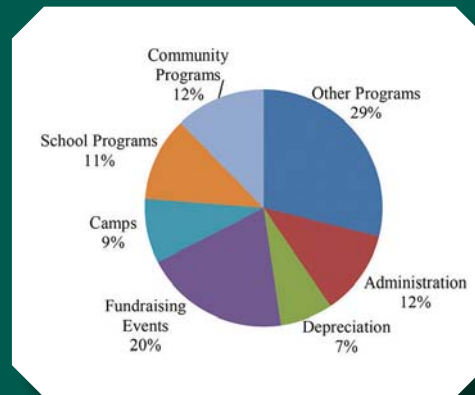
## October 1, 2016 - September 30, 2017

(With comparative totals for Oct. 1, 2015 through Sept. 30, 2016)

## REVENUE



## EXPENSES



BECOME A MEMBER ONLINE  
TINMOUNTAIN.ORG

| Statement of Financial Position as of           | 9/30/2017              | 9/30/2016              |
|---|------------------------|------------------------|
| <b>Assets:</b>                                  |                        |                        |
| Cash & Equivalents                              | \$ 195,223             | \$ 245,557             |
| Accounts Receivable                             | \$ -                   | \$ 1,423               |
| Pledges Receivable                              | \$ -                   | \$ 981                 |
| Inventories, Undeposited Funds, Other           | \$ 6,460               | \$ 4,899               |
| Property & Equipment (net of depreciation)      | \$ 2,330,557           | \$ 2,326,078           |
| Investment Fund (NH Charitable Fndn.)           | \$ 529,476             | \$ 494,464             |
| <b>Total Assets:</b>                            | <b>\$ 3,061,716</b>    | <b>\$ 3,073,402</b>    |
| <b>Liabilities:</b>                             |                        |                        |
| Accounts Payable & Accrued Expenses             | \$ 30,127              | \$ 20,072              |
| Mortgage  | \$ 200,723             | \$ 210,472             |
| <b>Total Liabilities</b>                        | <b>\$ 230,850</b>      | <b>\$ 230,544</b>      |
| <b>Net Assets:</b>                              |                        |                        |
| Unrestricted General Fund, Equip. & Prop.       | \$ 2,126,896           | \$ 2,211,286           |
| Temporarily Restricted                          | \$ 174,224             | \$ 137,108             |
| Permanently Restricted                          | \$ 529,746             | \$ 494,464             |
| <b>Total Net Assets:</b>                        | <b>\$ 2,830,866</b>    | <b>\$ 2,842,858</b>    |
| <b>Total Liabilities &amp; Net Assets:</b>      | <b>\$ 3,061,716</b>    | <b>\$ 3,073,402</b>    |
| <b>Statement of Activities</b>                  |                        |                        |
|   | <b>10/1/16-9/30/17</b> | <b>10/1/15-9/30/16</b> |
| <b>Revenue and Support:</b>                     |                        |                        |
| Grants, NRCS Proj.                              | \$ 190,526             | \$ 266,300             |
| Annual Fund, Membership, Gifts                  | \$ 161,545             | \$ 106,412             |
| Camp Revenue & Scholarship                      | \$ 57,635              | \$ 45,534              |
| Community Outreach Programs                     | \$ 12,493              | \$ 15,488              |
| School Program Support                          | \$ 48,590              | \$ 51,815              |
| Special Events & Misc. Fund Raisers             | \$ 312,644             | \$ 363,199             |
| Stewardship, Rental, Store & Other              | \$ 44,598              | \$ 15,433              |
| Interest Bank & NHCF                            | \$ 21,109              | \$ 20,395              |
| <b>Total Revenue and Support:</b>               | <b>\$ 849,140</b>      | <b>\$ 884,576</b>      |
| <b>Expenses:</b>                                |                        |                        |
| Administration                                  | \$ 107,872             | \$ 93,307              |
| Fundraising & Special Events                    | \$ 183,357             | \$ 186,998             |
| Grant Projects, NRCS Proj.                      | \$ 165,341             | \$ 120,162             |
| Camp Programs                                   | \$ 81,509              | \$ 76,839              |
| Community Outreach Programs                     | \$ 114,200             | \$ 116,330             |
| School Programs                                 | \$ 105,748             | \$ 97,783              |
| Stewardship, Rental, Store & Other              | \$ 101,811             | \$ 90,668              |
| Temp. Restricted Funds Released                 | \$ (81,394)            | \$ (39,218)            |
| Depreciation                                    | \$ 66,335              | \$ 63,921              |
| <b>Total Expenses:</b>                          | <b>\$ 844,779</b>      | <b>\$ 806,790</b>      |
| <b>Excess/Deficit of Revenue over Expenses:</b> | <b>\$ 4,361</b>        | <b>\$ 77,786</b>       |
| <b>Other Activities:</b>                        |                        |                        |
| Cabin Project Expenses                          | \$ 922                 | \$ 651                 |
| Capital Building Repair                         | \$ 5,446               | \$ -                   |
| Capital Reserve Transfer                        | \$ 10,000              | \$ 10,000              |
| Loan Principal Payments                         | \$ 9,748               | \$ 9,339               |
| <b>Total Other Activities:</b>                  | <b>\$ 26,116</b>       | <b>\$ 19,990</b>       |



# TIN MOUNTAIN CONSERVATION CENTER CONTRIBUTORS

## LIFE TIME MEMBERS

Joe & Judy Burgess  
T.O. Currier  
Stuart Feldman  
Judith Fowler  
Jen Hohenboken  
Matt Hohenboken  
Peter Klose  
William Lee  
A Neill Osgood  
Bob Santoro  
Tara Taylor  
Enya Taylor-Currier

## MEMBERS & ANNUAL DONORS

Adair Family  
Richard Akins  
Mark & Ingrid Albee  
Doug & Paula Albert  
Miriam Alcott  
Allan Aldrich Jr. & Linda Comeau  
Albert Alex  
Jeanette & William Almy  
American Endowment Foundation  
Anthony & Ellen Andreano  
Roy & Duddie Andrews  
Anna Stickney Chapter DAR  
Anonymous  
David & Rosemary Armington  
Alison C. Arthur  
Ash Tree Fund Of NH Charitable  
Kevin & Judith Ashe  
Peter Atwood  
Lisa & Roland Audette  
Deborah Ayers  
Ramona Bachman  
Joe Bagshaw & Melinda Coyle  
Judith Bailey & Stephen Oppenheim  
Dean & Gayle Baker  
Lori & Frank Balantic  
F. Michael Bannon  
Patricia Barker  
Stephanie Barnes & Barbara Fortune  
Cindy Baricoat Carboni  
William S. Barrett  
Barry Family  
Cindy Barstow  
Donald & Cynthia Bean  
Susan Beane & Peter Smith  
Lawrence & Holly Beck  
Edward Beecher & Christine Clyne  
Melissa Beesley  
Martha & Frank Benesh  
Ann & Richard Bennett  
Peter & Emily Benson & Family  
Kathleen & H. Edmund Bergeron  
Gene & Sue Bergoffen  
David Berlinsky & Adrienne Kovach  
Waltraud Bihn  
George & Ginny Bishop  
Gail Bizer  
Linda Blais  
Robert & Elaine Boissevain  
Bonsignore Family  
Ellin & Chris Booras  
Brad Borden  
John & Martha Bossert  
Paul & Claire Bouffard  
Robert Bowman & Lori Tradewell  
Lynn Bradbury/Jenna & Rebecca Isaacson  
Gloria Brennan  
Kate Briand  
Richard Brisbois  
Eileen & Bill Brochu  
Charles & Terri Brooks  
E. Allen & Joanne Brooks  
Thomas & Laura Broussard  
William Broussard  
David Brownell  
John Bruni & Dale D Warren  
Thaire & Deborah Bryant  
Joe & Judy Burgess  
Andrew & Alison Burke  
Ryan & Stacey Burke  
Douglas & Kathryn Burnell  
Heather & Seth Burnell

Anastasia Burns  
Nancy E Burns  
Mr. & Mrs. George Burton  
Charles & Marilyn Butler  
Dorilda Card  
Jeffrey M. Card  
Linda Card  
Mary Ellen & Tommy Card  
Sarah A. Card  
Calvin & Cindy Carpenter  
William F. Jr. & Kathleen Casey  
Scott Cecil & Eleanor Pansar  
Anne Chace  
Jeanne & John Chanely  
Helen Chapell  
William & Elizabeth Chapin  
Ann Chace  
CC, Brian & Sharon Childree  
Christopher P. Williams Architects  
Civil & Environmental Consultants, Inc.  
George & Aila Clausen  
Clean Earth Matters, LLC  
Mason Cline  
Marnie Cobbs & Dennis Sullivan  
Judy Coffey  
Rick & Julie Coffin  
Jeffrey Cohen  
John Colbath  
Gary E. Cole O.D.  
Dixie & Buzz Coleman  
Susan Colten  
Andre Comeau  
Jean & Paul Conley  
Chris Costello  
Country Cabinets  
Linda Coviello & Dana Patch  
Peter Crane & Holly Huhn  
Denny & Margaret Cromwell  
Robert & Susan Crowley  
Caitlin Crowley Zaino  
Karen Cummings  
Laura Cummings  
David & Roxanne Cyr  
Marilyn D'Aquanni  
Peter K. Davis  
Heather & David Day  
Thomas & Dorcas Deans  
Linda Denis  
Richard & Gloria Dennison  
Del & Marilyn Desmarais  
Dewar, Family  
Vnette DiGregorio  
Matthew DiMaio  
Mary Dindorf  
Donna Marie Dolan & Family  
Donna Marie Dolan & Jack Wolter  
Jeff Doll  
Margaret Doll  
Larry & Cathy Donoghue  
David & Barbara Douglass  
Janet Dow  
Noreen & Dave Downs  
Linda & Hank Dresch  
Rebecca Drewette-Card  
Jo-Ann Driscoll  
James & Jean Drummond  
Kathleen Drury & Robert Sprague  
Roland & Bette Dubois  
Frances D Duffy  
Anita Duncan  
Sarah Eastman  
Bertha Ellsmore & Samuel Johnson  
Mary Jane Elwell  
Emsbo-Mattingly Family  
Dawn Farnham  
Deborah & Peter Fauver  
C. Anthony & Suzanne Federer  
Charles & Margaret Felton  
Betty & Tino Fernandes  
Richard & Anne Ficke  
Jaden & Justine Fierman  
Gay Folland  
Robert Foppiano  
Valerie Ford  
Henry Forrest  
Roderick Forsman  
Susan Fortier  
Jessica Fortin

Jessica & Christopher Fournier  
Betsy & Brian Fowler  
Judith Fowler  
Brian Fox  
Elizabeth Fox & Wayne Lapham  
Karen Franke  
Sarah & Alec Frankel  
Patricia Freysinger  
Julie & Harris Galkin  
Theresa Ann & James F. Gallagher  
Joseph Gallucci  
Gamwell, Caputo, Kelsch & Co.  
Amy Garber  
Stephen Garber  
Anne Garland & Joanne Clarey  
Larry Garland  
Keith Garrett & Michelle Hansen  
Mike Garvan  
Bea Geary  
Betsy & Don Gemmecke  
Rick Gerber  
Sally & Jim Gibson  
Robert & Jane Gillard  
Mary Anderson Ginder  
Sharon Gogan  
Dale & Pat Goodwin  
Don & Susan Goodwin  
Jon & Kimberly Goodwin  
David Govatski  
Nancy & Al Goyette  
Cynthia Grane  
Linda Gray & David Gotjen  
Meghan & Patrick Jr. Gray  
Steve Gray  
Jack & Regina Greely  
JJ & Joanne Green  
Linda Grenfell  
Mark Guerringue  
Tommy Gunn  
Frank Gutmann  
Jennifer & Shawn Hagerty  
Larry Hall  
Susannah Halpern  
Katy Hamill & Bruce Chester  
Charles & Maureen Hanlon  
Tish Hanlon & Stephen Weeder  
Cynthia & Cort Hansen  
Dexter Harding & Lucy Gatchell  
Sam & Betsey Harding  
Georgette & Joel Hardman  
Russell T. & Lynne Hart  
Donna & Mark Harty  
David & Carol Hastings  
James & Linda Hastings  
Peter & Stefi Hastings  
Deborah Hatch  
Stephen & Kimberly Hatt Family  
Tyler Haulenbeek  
Ross L. Heald  
Pat & Bob Heiges  
Keagan C Hennessy  
Paul & Elaine Hennigan  
Kimberly Henry  
Shannyn Heyer & Jeremy Cardin  
Charlene & Ronald Hibbs  
Patricia & John Higgins  
Beth & Norm Hildreth  
Sandra Himmel Wright  
Jean Hodgins  
John & Patricia Hoffman  
Jen & Matt Hohenboken  
Deborah Holmes  
Frank & Barbara Holmes  
Berthold & Valerie Horn  
Charles F. & Maureen Houghton  
Janice Houghton  
Steven Howard  
Deb Howe  
Harrison & Barbara Hoyt  
Priscilla & Frank Hundley  
James Hurley  
The Hutchings Family  
Interstate Fire Protection  
Irene & Joe Jacintho  
Rhonda, Jake & Ian Jacobson  
Laura Jawitz & Gordon Cormack  
Eleanor Jenkins  
Vickie & Rick Jenkinson

Valerie & David Jensen  
Emily Johnson  
Mark & Natalya Johnson  
Melanie & Nathan Johnston  
Robert Jones & Jennie Wagner  
Nina & Jonas Kahn  
Robert Katz  
Cheryl & John Keator  
Walt & Cathie Keirans  
Tim Keith & Bill Petry  
Joan S. Kelley  
Daryl Kenison  
Judy & Dan Kennedy  
Frank & Janet Kern  
Kenneth & Sarah Kimball  
Lori Jean Kinsey  
Richard Klausner  
Peter & Elaine Klose  
William & Yvonne Klotz  
Rick & Paula Knight  
Jerry Knirk & Cam Spence  
Joseph & Fannie Knowles  
Muriel Kogut  
Robert H. Koppe  
Michael D. Kracht  
Ted & Carol Kramer  
John & Leslie Kremer III  
Paul & Laura Kuleszka  
Kim Kvaracein  
Bill & Lucy LaCasse  
Stacey & Duston Ladiou  
Maryly LaFollette  
Sheryl & Mark Lambert  
Francine Lampidis  
Walter Lancaster  
Russell & Joan Lanoie  
Joe LaRue  
Jeff Lathrop  
Ronald Lawler & Margaret Merritt  
Ed & Marlene Lawton  
Teresa & Frederick Leach  
George LeBlanc  
Susan Lee  
William Lee  
William J. Lee  
Richard & Eileen Lennon  
Vic & Janna Levesque  
Diana Levy  
Lewis M. & Esther Perlstein Family Fnd  
Donna M. Lietz  
Cheryl & Paul Littlefield  
Sean & Mary Littlefield  
Scott & Deborah Livingston  
M. E. Lloyd  
Christopher Logan  
Eugene Long  
Oscar W. Look IV  
Catherine M. Lovequist  
Campbell Lovett  
Peter Lowell  
Chester & Lydia Lucy  
William Luisi  
Roy Lundquist  
Michael Lutjen & Marcia Scogin  
Mike Lutch  
Karen Travers Lynch  
Gary & Karen MacDonald  
Charles & Robin Macomber  
Kathleen Macphee  
Marni Madnick & Robert Schor  
Candace A. Maher  
Linda & Scott Mahler  
Edmund & Lynda Mahoney  
Maine Dry Stone  
Manero Family  
Gordon Mann  
Manning Family  
Maple Leaf Motel  
Robbin Marks & Daniel Zabronsky  
Deborah Marques  
Margaret & Sut Marshall  
David & Jeanne Mason  
Pam & Phil Mason  
John & Barbara Matsinger  
Kim & Christopher Matte  
David Maudsley  
Vincent & Anne Mauro  
Joe & Daryl Mazzaglia



Christine McCarron  
McCluskey Family  
Robert McConaghy  
Kristen McDermott  
Angus McGrath  
Sally V. McGrath  
Tom & Fiona McKenna  
Braden McKenzie & Virginia Ward  
Kenneth & Linda McKenzie  
Jennifer McKown  
June McLeavey & Michael Weeder  
Sally McNurdo & Peter Minnich  
Wendy & John McVey  
Judith A. Meagher  
John & Catherine Mersfelder  
Kathleen & Robert Metz  
James A. Michaud  
Jack B. Middleton  
Milford Flooring, Inc.  
Elizabeth Mills  
Tracy Minnix  
Nicholas J. Mocer  
Charles Monaghan  
Virginia Monnes  
Ann & Murdock Montague  
Ted Morgan & Mary Lou Hatcher  
Nancy Morrison  
Mountain Garden Club  
Bruce Moyer  
Joyce Munise  
Bob & Jean Murphy  
Amelia Murphy  
David & Linda Nadeau  
Steve & Beth Nadeau  
NEMBA, White Mountains Chapter  
New Suncook Elementary School Staff  
Janice & Steve Nichipor  
Charlie Nims & Sheila McCarthy  
Brenda O'Brien  
Grace & Thomas O'Connor  
Sheila O'Connor  
Leslie O'Dell & John Beckwith  
Joseph Dean O'Donnell  
The Oedel Family  
Jim & Donese Oliver  
Jim & Donna Osgood  
Tedd Osgood  
Caleb & Mariana Page  
Lisa & Paul Paglierani  
David Paige & William Abbott  
Gail Paine  
Michael Papagni  
Emily Parent  
Catherine B. Paris  
Eric Pendleton  
John & Alice Pepper  
Joyce Perkins  
Christopher & Brittany Perley  
Anne Peterson  
John A. Peterson  
Karl & Susan Pfeil  
Carol Pierce  
AO & Karen Pike  
Richard & Prudence Plusch  
Lee & Sylvia Pollock  
Alix & Bob Pratt  
Jean & Bill Preis  
Dolores & Donovan Price  
Richard Quint  
R&R Woodworkers  
Ragged Mountain Equipment  
Jay & Robbin Rancourt  
Kenneth & Jane Rancourt  
Eileen & Joe Redmond  
Charles P. Reid  
Barbara & James Remley  
Richard H. Reuper  
Curt & Jill V. Reynolds  
Wendy Rigazio  
Frank Robey  
Debra Robinson  
Gael Rockwell & Ty Minton  
Lynn Rockwell & Roman Kokodyniak  
Seth Rockwell  
Ned & Liza Rogerson  
Bill Roman  
Ken Rose  
Jason Roth & Cheryl Steadman-Roth  
Ron Routhier  
Anthony Ruddy & Lisa Baumgartner

Brett & Cindy Russell  
Arlene Russell  
Elbridge & Linda Russell  
The Ryan Family  
James Sabatino  
Caitlin & Ned Sackman  
Saco Bound  
Saco Valley Gem & Mineral Club  
Bruce & Brenda Sampsel  
The Sandahl Family  
Glenn & Sonnhilde Saunders  
Leslie & Warren Schomaker  
Diane M. Schuette  
Joseph & Diane Scott  
Frank & Elizabeth Seabury  
David & Judith Seddon  
Hollye & Dave Seddon  
Jon Seliger  
William Sharp  
Mary Ellen Shea  
Melanie Sherlock & Family  
Beth Silver  
Robert A Silvestre  
William Simonds  
Jennifer & Tony Simone  
Ward & Nancy Simonton  
Barbara & Frederick Slader  
Linda Smiley  
David & Diane Smith  
Laurel Smith & Kevin Donohoe  
Michael Smith  
Peg Smith  
Dr. Faye D. & W. Donald Soderberg  
Doug & Kathy Somerville  
David Sordi  
Darlene & Warren Spence  
Connie & Bob St. Pierre & Family  
Staff of Josiah Bartlett Elementary School  
Rick & Jean Steber  
Bruce Stelle  
Linda Stetson  
Diana Stevenson  
Kathy & Dick Stewart  
Stibbons Family  
Story Land  
Marc & Sue Stowbridge  
Amanda Sturdevant  
Marvin & Judy Swartz  
James S. Sweeney  
Imre & Deborah Szauter  
Joe & Michele Szympruch & Family  
Tamarack Construction Company  
Mike Tamulis & Laraine Cormack  
Stephen & Catherine Tarp  
Tara Taylor & T.O. Currier  
Bob Teichman  
Hilary Terhune  
Linda Terry  
Brad & Bee Thayer  
Mary Judge Thayer  
Wendy & Chris Thayer  
Brenda & Don Thibodeau  
Beth & Kim Thomas  
Heidi and Grant Thomas  
Jean Macomber Thompson  
Richard & Beth Thompson-Tucker  
Ruth G. Timchak  
Amalia Torres  
The Townley Family  
Rick Van de Poll  
A. Jay Van Dyne & Family  
Anthony & Trudy Ventello  
Johanna Vienneau  
Stephen Walker & Diane DeLuca  
Gabriele Wallace  
Jim & Denice Walz  
Barry & Bonnie Ward  
Brian Wazlaw  
Merle & Herm Weber  
Harvey Weener  
Howie & Sue Wemyss  
Steven M Wenglowksy  
The Wentworth Hotel  
George & Laurie Weston  
Julie Weston  
White Family  
White Mountain Oil & Propane  
Jeff White & Joyce Peseroff  
Eileen Willard  
Christopher & Ann Williams

Judith Wilson  
Steve & Maureen Wilson  
Lisa Wing & Family  
Michael Wolfson  
David F. Wood  
Elizabeth H. Wood  
Denise & Steve Woodcock  
Christine Wray & John Felicitas  
Lesley Wright  
Moir & George Yip  
Arlene & Charlie Zaccaria  
Peter Jr. & Margaret Zack  
Cathy Zavistosk  
James & Jane Zavistosk  
Ellen & Andrew Zelman  
Gail Zimmerman  
Mary Zwiercan



## ROCKWELL SOCIETY MEMBERS

Pam Allen  
Jeanette & William Almy  
Anonymous  
The Barry Family  
Susan Beane & Peter Smith  
William Broussard  
Thaire & Deborah Bryant  
Anastasia Burns  
Janet Dow  
Anita Duncan  
Karen Franke  
Dexter Harding & Lucy Gatchell  
James & Linda Hastings  
Pat & Bob Heiges  
Deborah Holmes  
Cheryl & John Keator  
Michael Kracht  
Joe LaRue  
Susan Licardi  
Cheryl & Paul Littlefield  
Sean & Mary Littlefield  
Mike & Karen Travers Lynch  
David & Jeanne Mason  
Charles & Pamela Monaghan  
Karl & Susan Pfeil  
Alix & Bob Pratt  
Lynn Rockwell & Roman Kokodyniak  
Arlene Russell  
The Sandahl Family  
Melanie Sherlock & Family  
Jennifer & Tony Simone  
Rick & Jean Steber  
Johanna Vienneau  
Howie & Sue Wemyss  
George & Laurie Weston  
Lisa Wing & Family

**Honor of Lawrence Beck**  
American Endowment Foundation

**Honor of Steve Blais**  
Michael Papagani

**Honor of Robin Foster**  
Angus & Sally McGrath

**Honor of Horst Engineering**  
Scott & Deborah Livingstone

**Honor of Nate Hounsell**  
M.E. Lloyd

**Honor of Lori Jean Kinsey**  
Richard & Beth Thompson-Tucker

**Honor of Sean Michael Littlefield**  
Linda Grenfell

**Honor/Appreciation of Matt Maloney**  
Stephen Garber

**Honor of Logan & Cooper Maxwell**  
Emily Johnson

**Honor of the Rockwell Family**  
Elizabeth Mills

**Honor of Dick & Kathy Stewart**  
Lesley Wright

**Honor of Marvin & Judy Swartz**  
Amelia Murphy





#### **MEMORY OF DORILDA CARD**

Jeffrey Card  
Linda Card  
Mary Ellen & Tommy Card  
Rebecca Drewette-Card  
Donna & Mark Harty  
Bruce Moyer  
David & Linda Nadeau  
**Memory of Leo & Dorilda Card**  
Joyce Munise

#### **MEMORY OF STEPHEN CARD**

Dorilda Card  
Rebecca Drewette-Card  
Joyce Munise

#### **MEMORY OF CAROL FOORD**

Christopher Logan  
James Sweeney

#### **MEMORY OF NED HATFIELD**

Lisa & Roland Audette  
Gail Bizer  
CC Brian & Sharon Childree  
George & Aila Clausen  
David & Roxanne Cyr  
David & Barbara Douglass  
Kathleen Drury & Robert Sprague  
Francis Garvan  
Tyler Haulenbeek  
Maryly Lafollette  
Joseph O'Donnell  
David & Judith Seddon  
Hollye and Dave Seddon  
Hilary Terhune  
Julie Weston

#### **MEMORY OF JAMES R. HODGINS JR.**

Jean Hodgins

#### **MEMORY OF DONALD NAIDUS**

Barry & Bonnie Ward



*I want to lie down in dappled leaf-shade,  
In quivering shadows of quivering leaves-  
Be they oak, be they maple,  
Be they elm or birch,  
I want to rest in the play of shadows  
Over my reclining form,  
The massage of shadows  
which consoles me in its way,  
Restores for me  
with whatever restoration  
Flickering shadows of leaves afford-  
be they willow or aspen,  
be they poplar or beech,  
I want to be caressed by shadows  
of wavering leaves,  
Soothed off to sleep  
feeling the gentle breeze,  
Looking up at the rustling  
Sun-drenched crown-  
Be it basswood, be it chestnut,  
Be it walnut or hickory,  
after all is said  
after all is done,  
This is the way  
I would die.*

*Antler*



*Photos: Kim Nagy*



# MEMORY OF DR. MICHAEL LEE CLINE OCT. 8, 1951-JAN. 3, 2017

Allan Aldrich, Jr. & Linda Comeau  
Albert Alex  
Anthony & Ellen Andreano  
Roy & Duddie Andrews  
Lori & Frank Balantic  
Stephanie Barnes & Barbara Fortune  
Cindy Barstow  
Susan Beane & Peter Smith  
Edward Beecher & Christine Clyne  
Peter & Emily Benson & Family  
Kathleen & H. Edmund Bergeron  
David Berlinsky & Adrienne Kovach  
George & Ginny Bishop  
John & Martha Bossert  
Paul & Claire Bouffard  
Gloria Brennan  
David Brownell  
Thaire & Deborah Bryant  
Joe & Judy Burgess  
Douglas & Kathryn Burnell  
Anne Chace  
Civil & Environmental Consultants, Inc.  
Brittany Cline  
Mason Cline  
Norman Cloutier & Wendy Kethcum  
Marnie Cobbs & Dennis Sullivan  
Dixie & Buzz Coleman  
Chris Costello  
Peter Crane & Holly Huhn  
Denny & Margaret Cromwell  
Caitlin Crowley Zaino  
Marilyn D'Aquanni  
Donna Dolan & Family  
Donna Dolan & Jack Wolter  
Jeff Doll  
Margaret Doll  
Richard & Anne Ficke  
Jaden & Justine Fierman  
Gay Folland  
Valerie Ford  
Roderick Forsman  
Jessica Fortin  
Betsy & Brian Fowler  
Judith Fowler  
Sarah & Alec Frankel  
Theresa Ann & James F. Gallagher  
Gamwell, Caputo, Kelsch & Co.  
Amy Garber  
Larry Garland  
Betsy & Don Gemmecke  
Sally & Jim Gibson  
Don & Susan Goodwin  
David Govatski  
Linda Gray & David Gotjen  
Jennifer & Shawn Hagerty  
Susannah Halpern  
Cynthia & Cort Hansen  
Sam & Betsey Harding  
James & Linda Hastings  
Peter & Stefi Hastings  
Stephen Hatt  
Pat & Bob Heiges  
Jen & Matt Hohenboken  
Charles & Maureen Houghton

Harrison & Barbara Hoyt  
Rhonda, Jake & Ian Jacobson  
Valerie & David Jensen  
Emily Johnson  
Josiah Bartlett Elementary, Staff  
Kenneth & Sarah Kimball  
Kiwanis Club of MWV  
Peter & Elaine Klose  
Muriel & Michael Kogut  
Bill & Lucy LaCasse  
Walter Lancaster  
William J. Lee  
Christopher Logan  
Peter Lowell  
Mike Lynch & Karen Travers Lynch  
Charles & Robin Macomber  
Sut & Margaret Marshall  
David & Jeanne Mason  
Vincent & Anne Mauro  
Braden McKenzie & Virginia Ward  
Wendy & John McVey  
Mountain Garden Club  
Steve & Beth Nadeau  
New Suncook Elementary, Staff  
Charlie Nims & Sheila McCarthy  
David Paige & William Abbot  
Emily Parent  
Joyce Perkins  
Christopher & Brittany Perley  
Anne Peterson  
Karl & Susan Pfeil  
Richard & Prudence Plusch  
Lee & Sylvia Pollock  
Jean & Bill Preis  
Dolores & Donovan Price  
Eileen & Joe Redmond  
Charles Reid  
Barbara & James Remley  
Wendy Rigazio  
Bruce & Brenda Sampsel  
Joseph & Diane Scott  
Ward & Nancy Simonton  
Linda Stetson  
Amanda Sturdevant  
Marvin & Judy Swartz  
Tamarack Construction Company, Inc.  
Stephen & Catherine Tarp  
Tara Taylor & T.O. Currier  
Bob Teichman  
Brad & Bee Thayer  
Jean Macomber Thompson  
Rick Van de Poll  
Anthony & Trudy Ventello  
Johanna Vienneau  
Merle & Herm Weber  
Howie & Sue Wemyss  
George & Laurie Weston  
White Family  
Jeff White & Joyce Peseroff  
Eileen Willard  
Christopher & Ann Williams  
Gail Zimmerman







# 2017 First Season Dinner Benefit Auction

THE TIN MOUNTAIN BOARD OF TRUSTEES AND STAFF

THANK AREA BUSINESSES AND INDIVIDUALS FOR CONTRIBUTING TO THE GREAT SUCCESS OF THE 31<sup>ST</sup> FIRST SEASON DINNER BENEFIT AUCTION!

Special thanks to George Cleveland, the Fryeburg Academy, Fryeburg Fair Association, Mountain Top Strings, the Oxford House and the many wonderful volunteers, sponsors, donors and attendees for making this such an amazing event!



*The Tin Mountain Conservation Center. First Season Benefit Dinner and Auction is a fundraising event presented each spring by the Board of Trustees and staff. Over 275 local merchants donate items for the auction. This years TMCC First Season event drew a crowd of 340 people and provided critical support for Tin Mountain school and camp programs offered in northern New Hampshire and western Maine.*

*Thank you for your generous support!*

A Better Body  
Albany Pet Care  
Alvin J. Coleman & Son, Inc.  
Andrea Kennett  
Ann Bennett  
Anonymous  
Appalachian Mountain Club  
Attitash Mountain Resort  
Awesome Massage  
B.N.I.  
Banner's Restaurant  
Barbara Fortune  
Barbara Hoyt  
Barbara Sperling  
Bavarian Chocolate Haus  
Bear Notch Ski Touring Center  
Betty J. Rogers, Fiber Artist  
Big Dave's Bagels & Deli  
Bill Brochu Photography  
Birch Ledge Designs  
Black Mountain  
Black Mountain Property Services, Inc.  
Brandl's Pizza Pasta Grille  
Brookhirst Farm Bed and Breakfast  
Brooks Brothers  
Cafe' Noche  
Canobie Lake Park  
Carol Manley  
Carroll County Independent  
Castle in the Clouds  
Center for Natural Health  
Chalmers Insurance Group  
Cheryl & Paul Littlefield  
Cheryl's Clipper Cuts  
Children's Museum of NH  
Christmas Farm Inn  
Clark's Grain  
Cole Scott Photography  
Conway Eye Care  
Conway Scenic Railroad  
Cooper Cargill Chant  
Cormack Construction Management  
Country Cabinets  
Covered Bridge Shoppe  
Cranmore Mountain Resort  
Crazy Mittens  
Crest Auto World  
Darlene Fremneau  
David Alden  
Deacon Street Martini & Whiskey Bar  
Dean & Gayle Baker  
Deborah Ayers  
Dick Brisbois  
Don Gemmecke  
Donna Dolan  
Dr. N. Scott Ferguson, OD  
Dutch Bloemen Winkel  
Eastern Inns  
Eastern Mountain Sports  
Eastern Mountain Sports Schools  
Eaton Village Store  
Ebenezer's Restaurant & Pub  
EcoSystems Management Consultants  
Ed Bergeron  
Edge of Maine Frame and Gallery  
Elaine Wilkey  
Ellie and Michael Kahn

Ellie Eastman  
Elvio's Pizzeria  
Emily & Peter Benson  
Enlightened Horizons  
Erin Finney Glass Designs  
Fairbanks Museum and Planetarium  
Flatbread Company  
Framed Art Superstore  
Freedom Computer  
Friend Of Tin Mountain  
Fryeburg Fair Association  
Fryeburg Veterinary Hospital  
Funky Bubble  
Funspot  
Gail Zimmerman  
Garden Dreams  
Gaye Gould  
Gayle Baker Valley Travel  
Glen Ledge Corner Store  
Grandy Oats  
Great Book Studio  
Great Glen Trails  
Green Mountain Furniture  
Green Thumb Farms  
Hair Designs  
Hale's Location Golf Course  
Ham Arena  
Harrison Hoyt  
Hart's Turkey Farm Restaurant  
Heart and Hand, Inc.  
Heidi Root  
Hill's Florist  
Hill's R.V.'S  
Infinger Insurance  
Inn at Crystal Lake  
International Mountain Equipment  
Jackson Home & Design  
Jackson Ski Touring Foundation  
Janet Durkee  
Janna Levesque  
Jean Preis  
Jen Hohenboken  
Jerry Montague  
Jessica Mixer  
Jill Reynolds  
Joe and Judy Burgess  
Johanna Vienneau  
John & Pat Higgins  
Johnny D's Smoke Shop  
Journey Church  
Joyce A Desmarais  
Karen Eisenberg Designs  
Karla's Pet Rendezvous  
Kathy Bowie  
Kid's Work Aprons & Cloth Books  
Kim Linnell-Infinger  
King Pine Ski Area  
Kiwanis Club of Mount Washington Valley  
L.L.Bean  
Lake Kezar Country Club  
Leavitt's Country Bakery  
Laura Hill Eastman Performing Arts Center  
Limmer Boot, Inc.  
Linda Gray  
Linda Sorensen Jewelry  
Lindsey's Paint & Wallpaper  
Lindt Chocolate

Lisa Gardner  
Little Meadow / Jon Whitney  
Lupine, Inc.  
M&M Assurance  
Macomber Glass  
Madison Lumber Mill  
Maine Morning Micro Roasters  
Manchester Monarchs  
Margarita Grill  
Marnie Cobbs  
Martignetti Companies  
Marty Basch  
Milford Flooring  
Mount Washington Valley Kustomz  
Mountain Streams Music  
Mountain Top Music Center  
Mt Washington Railway Company  
Mt. Valley Mall Cinemas 7  
Mt. Washington Auto Road  
Mt. Washington Observatory  
MWV Children's Museum  
Nancy Grant  
Nancy Ritger  
New Business Directions  
New England Embroidery  
New Hampshire Mushroom Co.  
North Conway Country Club  
North Country Angler  
North Country Dental  
North Country Fair Jewelers/  
Northeast Gems  
Northway Bank  
Off The Beaten Path  
Old Village Bakery  
Outdoor Images  
Paris Farmers Union  
Patricia Walker  
Peace Fleece  
Peach's Restaurant  
Peggy Clark Lumpkins Paintings  
Penguin Gallery of NH  
Pepsi Varsity Beverage  
Peter & Elaine Klose  
Peter Blue  
Physician Engineered Product  
Porter Office Machines  
Portland Glass  
Portland Symphony Orchestra  
Priscilla's Country Kitchen  
Proulx Oil & Propane  
& Reliable Oil & Propane  
Purity Spring Resort  
Quisisana Resort  
R & R Woodworkers  
Ragged Mt. Equipment  
Red Sox  
Remick Country Doctor Museum  
& Farm  
Richard M. Plusch Antiques  
Rick Gerber  
River Stone Muscular Therapy  
Root Cellar  
Rosemary Barsky  
Russ and Joan Lanoie  
Saco River Canoe & Kayak, Inc  
Saco River Pottery  
Saco Valley Gem and Mineral Club

Sally Bags  
Sandy Barriault  
Sap Hound Maple Company  
School House Farm  
Schwoolies, Etc  
Settlers' Green - OVP Management  
Snowvillage Inn  
Spice and Grain  
Spruce Hurricane  
Squam Lakes Association  
Squam Lakes Natural Science Center  
Star Island Corporation  
Starbuck's  
State Farm Insurance  
Stephen Walker  
Stone Mountain Arts Center  
Storyland  
Sunnyfield Brick Oven Bakery  
Susan Halpern  
Swift River Wood Products  
Tarnworth Distilling & Merchantile  
Thaddeus Thorne Survey, Inc.  
The Artery  
The Back Burner  
The Beggar's Pouch  
The Conway Daily Sun  
The Darby Field Inn  
The Local Grocer  
The Lyceum  
The Original Cigar & Bar  
The Oxford House Inn  
The Quilt Shop & Vac n Sew  
The Wentworth Hotel  
The Wooden Soldier  
Timber Bay Home & Garden  
Tin Mountain Conservation Center  
Tom Grisham  
Tony & Ellen Andreano  
Toy Chest  
Tree Frog Ink  
Turkey Sweet Maples  
Upper Saco Valley Land Trust  
V.E. Smith & Son Plumbing & Heating  
Valley Originals  
Vintage Baking Co  
Vintage Framework  
Vintage Frameworks / Judy & Joe Burgess  
Waterford Wedgwood Royal Doulton  
Wayside Farm  
Weston's Farm Stand  
White Birch Books  
White Mountain Cupcakery  
White Mountain Hotel and Resort  
White Mountain Hypnosis Center  
White Mountain Puzzle  
White Mountain Waldorf School  
Whitehorse Gear  
Wild Light Images  
Wild Northeast Magazine  
Wildcat Inn & Tavern  
Wildcat Resort  
Windy Ridge Corporation  
With These Hands Pottery  
WMMV  
Wolfeboro Computer Solutions  
Zeb's General Store  
Zumba Fitness w/ Dotti Aiello



# Mt. WASHINGTON AUTO ROAD BICYCLE HILLCLIMB

## *Benefit of Tin Mountain*

### **Hillclimb Sponsors:**

AMC  
Big Dave's Bagels  
BKOOOL  
Cadence Wealth Management  
Conway Daily Sun  
Destination Cycling  
Downeast Bicycle Specialists  
Finish Line USA  
Magic 104 FM Radio  
Mt. Washington Auto Road  
Pearl Izumi  
Pioneer Registration  
Quad Cycles  
Ragged Mountain  
White Mountain Amateur Radio Club  
Wingate Wealth Advisors  
WMWV 93.5 FM

### **Hillclimb Donors:**

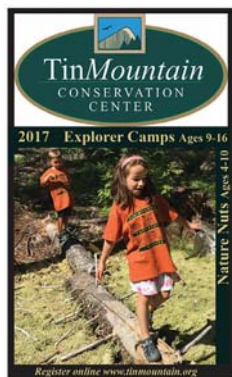
Michael Baird  
Lawrence Beck  
Julie Bernardi  
Jitka Borowick  
Christopher Burk  
Jose Castro  
Ken Dreisbach  
Sheila Drinkwater  
Sarah Eustis  
James Hayes  
Jon Heydenreich  
Amy Kitson  
Lakes Region Coca Cola  
Lisa Ludwig  
Judith Marklin  
Marti Shea Coaching  
Brian McCreadie  
PJ McQuade  
James Michaud  
Nicholas Mocerri  
Thomas Newmeyer  
Carrie Rouse  
James Sabatino  
Sap Hound Maple Syrup  
Jonah Thompson  
Steven Wenglowksy

# Mt. WASHINGTON CENTURY RIDE

## *Benefit of Tin Mountain*

### **Century Sponsors:**

Café Noche  
Conway Daily Sun  
Downeast Bikes  
Fandangles Catering  
Hannaford Supermarkt  
Jennifer & Matt Hohenboken  
Magic 104 FM  
Mt. Washington Valley Bicycle Club  
Pearl Izumi  
Sysco Food  
White Mountain Amateur Radio Club  
WMWV 93.5 FM



### **CAMP BROCHURE** SACO Bound, Inc

### **CAMP STAFF**

#### **CAMP DIRECTOR**

Phaedra Demers

#### **COUNSELORS**

Janet Dow  
Mike Dufilho  
Alex Frankel  
Lucy Getchell  
Dexter Harding  
Joshua Laskin  
Matt Maloney  
Camille Rohde  
Dawson Santoro  
Kathryn Thorney  
**JR. COUNSELOR**  
Jill Foster  
Eve Paglierani  
Madeline Rohde  
Riley Steward  
Isiah Voter

### **CAMP SCHOLARSHIPS**

Roy & Duddie Andrews  
Dean & Gayle Baker  
Peter & Emily Benson & Family  
Thaire & Deborah Bryant  
Douglas & Kathryn Burnell  
Bushee Thorn Mtn Retreat Trust  
Carroll County Altrusa Foundation  
Judy Coffey  
Eaton Conservation Commission  
Charles & Margaret Felton  
Gay Folland  
Judith Fowler  
Theresa Ann & James F. Gallagher  
Mark Guerringue  
Sam & Betsey Harding  
Pat & Bob Heiges  
Jen & Matt Hohenboken  
Deb Howe  
Laura Jawitz & Gordon Cormack  
Valerie & David Jensen  
Kiwanis Club of MWV  
Gary & Karen MacDonald  
Charles & Robin Macomber  
Margaret & Sut Marshall  
David & Jeanne Mason  
Jean & Bob Murphy  
AO and Karen Pike  
Richard & Prudence Plusch  
Glenn & Sonni Saunders  
Joseph & Diane Scott  
Rick & Jean Steber  
Kathy & Dick Stewart  
Tamworth Conservation Commission  
Tara Taylor & T.O. Currier



*Mountain Top Strings--First Season*



*Sophia & Annaliese--First Season*

*-Lisa DuFault*



*Mt. Washington Century Ride*

*-Donna Dolan*



*Mt. Washington Auto Road Hillclimb*

*-Joe Viger*



*Mt. Washington Auto Road Hillclimb*

*-Joe Viger*

## SPECIAL THANKS TO BUSINESSES AND INDIVIDUALS DONATING SERVICES, TIME AND PRODUCTS:

Bill Almy  
Jeanette Almy  
Tony Andreano  
Duddie Andrews  
Roy Andrews  
Deb Ayers  
Carlene Bane  
Stephanie Barnes  
Meagan Barry  
Barbara Barton  
Frank Barton  
Nona Bauer  
Bea's Restaurant  
Martha Benesh  
Frank Benesh  
Anne Bennett  
Emily Benson  
Peter Benson  
Kim Bowker  
Frank Benesh  
Rebecca Bracken  
Alex Bradford  
Bill Brochu  
Eileen Brochu  
Will Broussard  
Thaire Bryant  
Joe Burgess  
Judy Burgess  
Doug Burnell  
Kathy Burnell  
Brian Byrne  
Kathy Byrne  
Linda Blais  
Steve Blais  
Maria Chavez Orduz  
Joel Clement, Freedom Computer Inc  
Jeff Cohen  
Dixie Coleman  
David Condoulis  
John Cooper  
Lorraine Cormack  
Christine Costello  
Bob Crowley  
Sue Crowley  
T.O. Currier  
Bruce Curtis-McLane  
Kate Curtis-McLane  
Marilyn D'Aquanni  
Joyce Desmarais  
Cliff Dickenson  
Steven Discordia  
Linda Denis  
Kevin Donahoe  
Donna Donnelly  
Bette DuBois  
Mike Dufilho  
Linda Dresch  
Hank Dresch  
Sarah Eastman  
Rick Faucher  
Sarah Fensore  
Ian Ferguson  
Wayne Fitch  
Bert Flower  
Stuart Feldman  
Ralph Fiore  
Sally Fiore  
Flatbread Company of North Conway  
Gay Folland  
Bryant Fong  
Barbara Fortune  
Judy Fowler  
Aaron Fryman  
Jim Gallagher  
Theresa Gallagher  
Anne Garland  
Lucy Gatchell  
Henry Gotjen  
Dale Goodwin  
Pat Goodwin

Gaye Gould  
Linda Gray  
Steve Graustein  
Joanne Green  
Scott Hammond  
Tish Hanlon  
Betsey Harding  
Sam Harding  
Dexter Harding  
Jim Hastings  
Linda Hastings  
Bob Heiges  
Pat Heiges  
Steve Hempel  
Elaine Hennigan  
Paul Hennigan  
Gloria Hutchings  
Charlene Hibbs  
John Higgins  
Pat Higgins  
Bekka Hohenboken  
Jen Hohenboken  
Matt Hohenboken  
Barbara Hoyt  
Harrison Hoyt  
Gloria Hutchings  
Greg Izzo  
Cheryl Keator  
John Keator  
Linda King  
Rick Klausner  
Peter Klose  
Chris Krug  
Walter Kurz  
Timothy Lafayette  
Walter Lancaster  
Russ Lanoie  
Joan Lanoie  
Joe LaRue  
Mike Levine  
Diana Levy  
Larry Leonard  
Nels Liljedahl  
Cheryl Littlefield  
Paul Littlefield  
Sean Littlefield  
Clare Long  
Annaliese Matte  
Kim Matte  
Joe Manning  
Maria Manning  
Anne Mauro  
Tracy Marnich  
Margaret Marshall  
Dave Mason  
Jean Mason  
Daryl Mazzaglia  
Kathy McGreavy  
Diana Medina  
Maria Medina  
Minuteman Press  
Kathy Moore  
Frank Murphy  
Mike Nilan  
Vince Pelote  
Anne Peterson  
Karl Pfeil  
Susan Pfeil  
Carol Pierce  
Cathy Poppenwimer  
Pot Luck Singers  
Luke Quigley  
Madeline Rohde  
Ken Rose  
Mark Ross-Parent  
Susan Ross-Parent  
Lynne Route  
Leslie Rowse  
Wendy Rigazio  
Jeff Sansone

Bob Santoro  
Dawson Santoro  
Carol Saunders  
Molly Savard  
Merle Sciacca  
Gregory Shafer  
Wendell Shaffer  
Mary Sheldon  
Terry Sheridan  
Ward Simonton  
Laurel Smith  
Peter Smith  
Tim Sorgi  
Donovan Spaulding  
Larissa Spaulding  
Jean Steber  
Rick Steber  
Bob Stevenson  
Dick Stewart  
Judy Swartz  
Marvin Swartz  
Mariah Sweany  
Mike Tamulis  
Chris Tanguay  
Cam Tascione  
Tara Taylor  
Amy Thompson  
Larry Thompson  
Pat Thorney  
Lisa Thurston  
Karen Travers-Lynch  
Johanna Vienneau  
Ben Timm  
Kiah Walker  
June Waltz  
Herm Weber  
Merle Weber  
Stephen Weeder  
Cathy Weiss  
Brenda Weston  
Weston Farms  
Lisa White  
Jack Wolter  
Steve Woodcock  
Jeannie Woodward  
Tom Workman  
Suzanne Young  
Sam Zabronsky  
Gail Zimmerman

## PHOTOGRAPHERS:

Ed Bergeron  
Kathy Bergeron  
Corrie Blodgett  
Rebecca Bracken  
Bill Brochu  
Will Broussard  
Naomi Buckman  
Judy Burgess  
Joe Burgess  
Carolyn Brown  
Bill Brochu  
Mason Cline  
Chris DeNuzzio  
Sophia DiBella  
Matt DiMaio  
Katelyn Dolan  
Donna Dolan  
Lisa DuFault  
Tom Eastman  
Debbie Eddison  
Sarah Fensore  
Sarah Frankel  
Jamie Gemmetti  
Roger Irwin  
Leo Kenney  
Lori Jean Kinsey  
Heather Leach  
Chris Lewey  
Jessica Mailhot  
Matt Maloney  
J.S. McElvery  
Lily Morgan  
Karl & Susan Pfeil  
Craig Harrison  
Stefi Hastings  
Kim Nagy  
Jotham Oliver  
Wendy Rigazzio  
Mark D. Shiller  
Rick Steber  
Stephen A. Thomas  
Andrew Thompson  
Kathryn Thorney

## Local Volunteer Groups Including:

White Mountain Amateur Radio Club  
Mountain Garden Club  
Saco Valley Gem and Mineral Club  
Kennett Key Club  
Fryeburg Interact Club  
Junior National Honor Society JBES  
Pequawket Kids  
Valley Originals  
Wonalancet Outdoor Club



Donna Dolan





*Tin Mountain Summer Campers*



*Exemplary Service Award, Jen Hohenboken*



*Outstanding Environmental Educator, Lara Preece  
Volunteer of the Year, Johanna Vienneau  
The Business Partner Award, Alvin J Coleman*



*Distinguished Service Award, Norman Cloutier*



*Tin Mountain KHS College Scholarship Recipient  
Andrew Jolin, Unity College, Wildlife Biology*



Over 5,000 Children Served Per Year  
Incorporated 38 Years  
11 Staff Members  
319 TMCC Members  
53 Volunteers  
1637 Acres Owned or Managed  
14 Miles of Hiking Trails  
5 High School Scholarships  
70 Nature Programs Per Year  
5 Summer Camp Locations  
200 Campers Per Summer  
41 Research Interns Since 2008  
32 Trout Streams with Wood Additions  
2 Books Published  
77 Solar PV Panels  
31 First Season Diner Auctions  
2775 Books in the TMCC Library  
29 Christmas Bird Counts

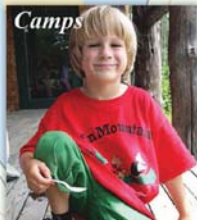


*Lifetime Member, Tara Taylor Volunteering*



*Tin Mountain Environmental Trivia*

*Tin Mountain  
Bird Society*



## **Tin Mountain Conservation Center's Mission:**

*"To promote an appreciation of the natural environment among children, adults, and families through hands-on programs in the schools, at camps, and in the community and to demonstrate responsible stewardship of natural resources through land protection, research, sustainable forestry, agriculture, and energy."*

**Tin Mountain Conservation Center**

**1245 Bald Hill Rd, Albany, NH 03818 603-447-6991 [www.tinmountain.org](http://www.tinmountain.org)**



NONPROFIT ORG  
U.S. Postage  
PAID  
BERLIN, NH  
PERMIT NO. 42



[www.tinmountain.org](http://www.tinmountain.org)



Photo: Matt DiMaio

**Tin Mountain Conservation Center, 1245 Bald Hill Road, Albany, NH 03818**