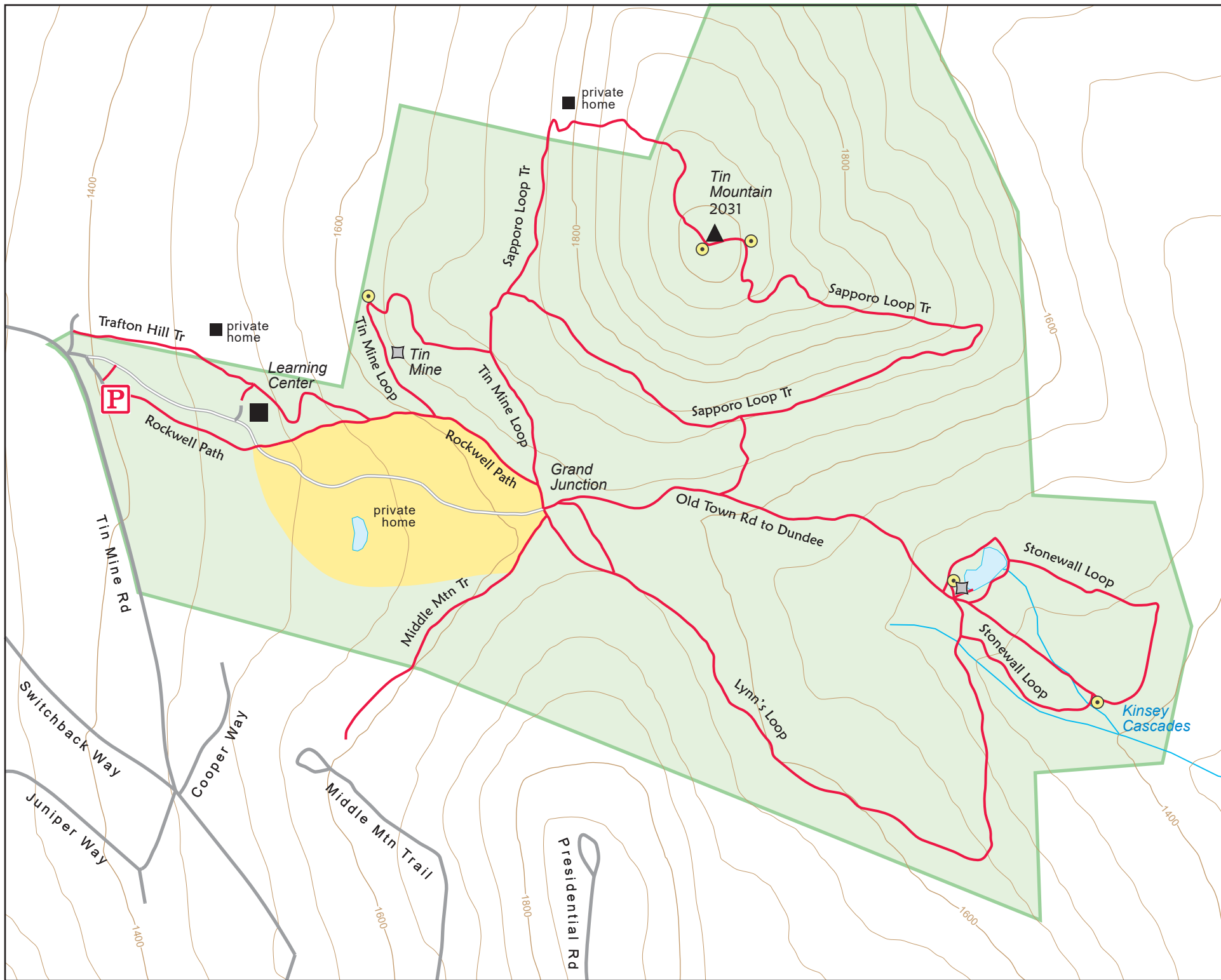




# Tin Mountain Conservation Center

## Jackson Field Station Trail Map



### LEGEND

- Jackson Field Station
- Private Property
- Parking
- Summit
- Viewpoint
- Cellar Hole
- Driveway closed to vehicle and foot traffic



Contour Interval 50 feet  
Scale in feet



Cartography by Larry Garland  
Appalachian Mountain Club